



**BARNETTS COURT, HARROW, MIDDLESEX, HA2**  
**£110,000 LEASEHOLD**

**OVER 60'S ONLY!**

Tenure: Leasehold - Approximately 60 Years Remaining  
Ground Rent: Peppercorn  
Service Charge: £2,414.64 Per Annum  
Council Tax Band: C (London Borough of Harrow)  
EPC Rating: D

Harrow | 020 8861 3933 | harrow@winkworth.co.uk

**Winkworth**

for every step...

*winkworth.co.uk*





#### DESCRIPTION:

Winkworth Harrow are delighted to introduce this charming one bedroom ground floor retirement flat in the heart of South Harrow.

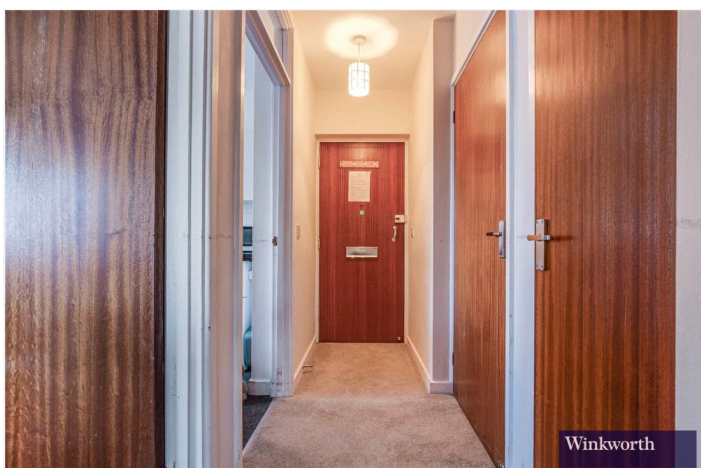
Barnetts Court provides a safe haven for those over 60 years of age, looking to begin their retirement in a tranquil, yet central location.

The apartment comprises a bright and airy reception room, a convenient fully fitted kitchen and a modern bathroom, complete with walk in shower.

Offered for sale with no ground rent, approximately 60 years of unexpired leasehold Barnetts Court offers warden assisted living and round the clock assistance, if needed.

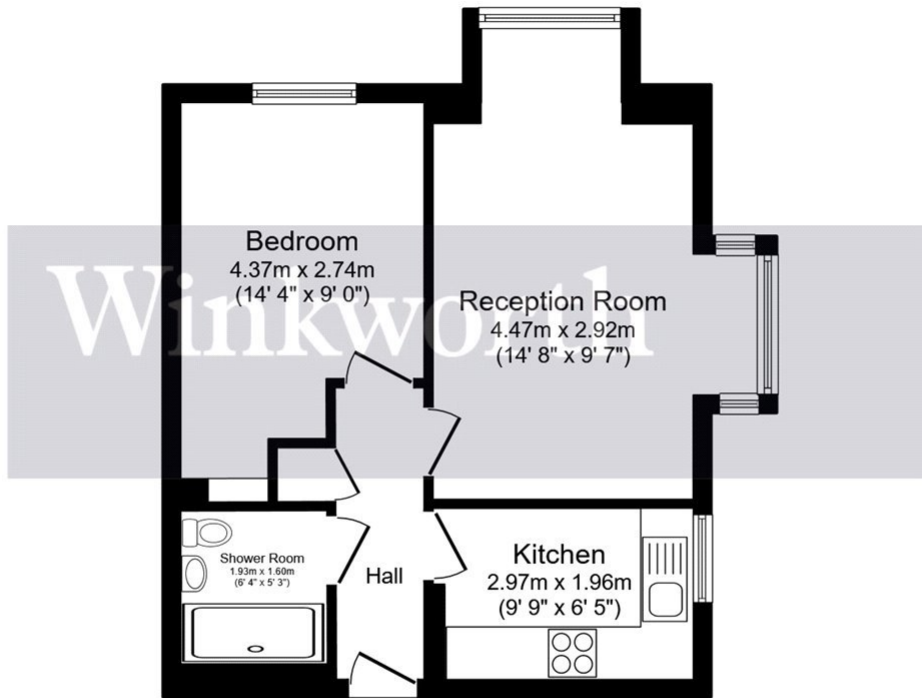
Further benefits include a resident's lounge, unreserved parking to the front, laundry room and a warden's office.

Located on Corbins Lane, South Harrow's plethora of local shopping, dining and leisure facilities are only a stones throw away. South Harrow underground Station is conveniently located a mere 500 yards from the development.





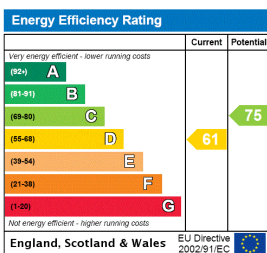




Total floor area 41.1 m<sup>2</sup> (443 sq.ft.) approx

This floor plan is for illustrative purposes only. It is not drawn to scale. Any measurements, floor areas (including any total floor area), openings and orientation are approximate. No details are guaranteed, they cannot be relied upon for any purpose and they do not form part of any agreement. No liability is taken for any error, omission or misstatement. A party must rely upon its own inspection(s). Powered by [www.focalagent.com](http://www.focalagent.com)

This floorplan is for illustration purposes only and is not to scale. The position and size of doors, windows, appliances and other features are approximate.



Harrow | 020 8861 3933 | [harrow@winkworth.co.uk](mailto:harrow@winkworth.co.uk)

for every step...

[winkworth.co.uk](http://winkworth.co.uk)

Winkworth wishes to inform prospective buyers and tenants that these particulars are a guide and act as information only. All our details are given in good faith and believed to be correct at the time of printing but they don't form part of an offer or contract. No Winkworth employee has authority to make or give any representation or warranty in relation to this property. All fixtures and fittings, whether fitted or not are deemed removable by the vendor unless stated otherwise and room sizes are measured between internal wall surfaces, including furnishings.