



**KENMORE AVENUE, MIDDLESEX, HA3
OIEO £435,000 FREEHOLD**

**Tenure: Freehold
EPC Rating: D
Council Tax Band: D**

Harrow | 020 8861 3933 | harrow@winkworth.co.uk



for every step...

winkworth.co.uk



DESCRIPTION:

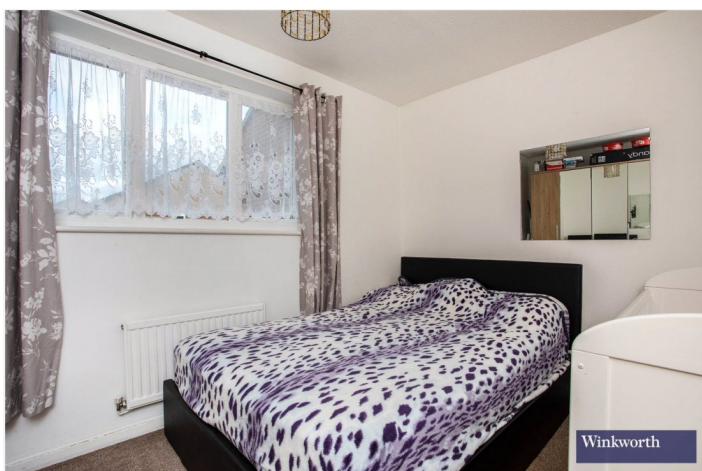
Introducing this charming terraced house, boasting two inviting bedrooms, situated in a sought-after location.

As you step inside, you will be welcomed by a warm and inviting atmosphere, offering a comfortable and convenient living space.

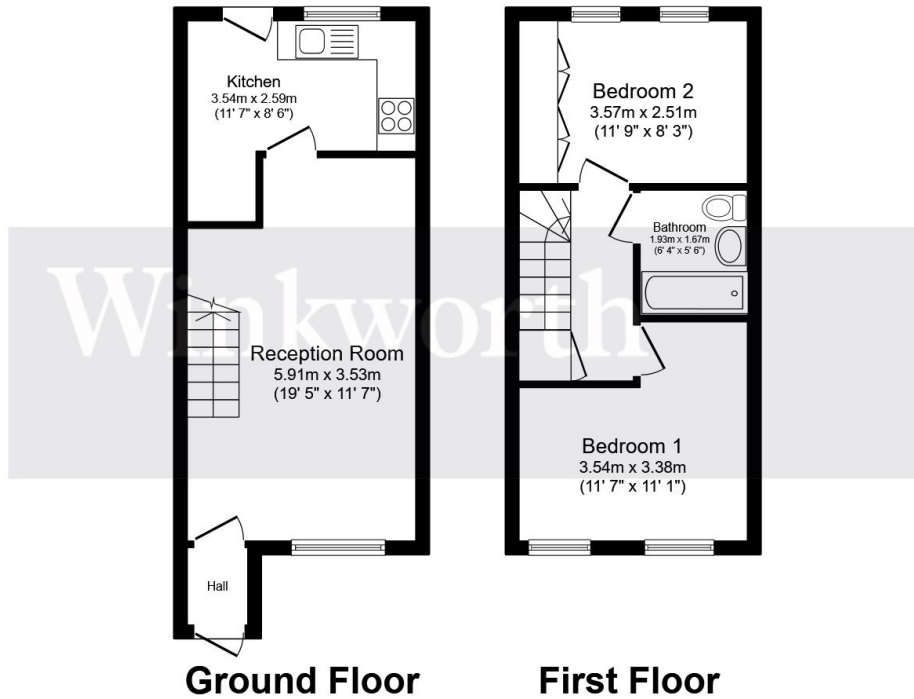
The property features a well-maintained garden, perfect for enjoying the outdoors and hosting gatherings. The interior boasts a bright and airy ambiance, with ample natural light flooding through the windows.

The bedrooms are generously sized, providing a peaceful retreat for a good night's sleep. This property is ideally located, offering easy access to local amenities, schools, and transport links.

Whether you are a first-time buyer, a small family, or an investor, this terraced house presents a fantastic opportunity to own a delightful home.



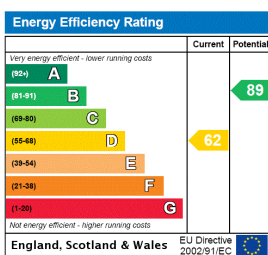




Total floor area 57.8 m² (622 sq.ft.) approx

This floor plan is for illustrative purposes only. It is not drawn to scale. Any measurements, floor areas (including any total floor area), openings and orientation are approximate. No details are guaranteed, they cannot be relied upon for any purpose and they do not form part of any agreement. No liability is taken for any error, omission or misstatement. A party must rely upon its own inspection(s). Powered by www.focalagent.com

This floorplan is for illustration purposes only and is not to scale. The position and size of doors, windows, appliances and other features are approximate.



Harrow | 020 8861 3933 | harrow@winkworth.co.uk

for every step...

winkworth.co.uk

Winkworth wishes to inform prospective buyers and tenants that these particulars are a guide and act as information only. All our details are given in good faith and believed to be correct at the time of printing but they don't form part of an offer or contract. No Winkworth employee has authority to make or give any representation or warranty in relation to this property. All fixtures and fittings, whether fitted or not are deemed removable by the vendor unless stated otherwise and room sizes are measured between internal wall surfaces, including furnishings.