



BLAKES QUAY, READING, BERKSHIRE, RG1 3EW  
£595,000 LEASEHOLD

## EXECUTIVE THREE DOUBLE BEDROOM DUPLEX PENTHOUSE APARTMENT WITH VIEWS ACROSS THE RIVER KENNET

Reading | 0118 4022 300 | [reading@winkworth.co.uk](mailto:reading@winkworth.co.uk)

**Winkworth**

for every step...

[winkworth.co.uk](http://winkworth.co.uk)



## DESCRIPTION:

Executive three double bedroom duplex penthouse apartment with views across the River Kennet. The property comprises; spacious living/dining room; kitchen/breakfast room complete with high spec integrated appliances; three double bedrooms; master with en-suite and dressing area and a further family bathroom. There is a secure underground parking space and resident's gym and games room. The property is located within short walking distance from the Oracle shopping centre and Reading train station, transport links via the A329 and M4 are also close by. No onward Chain.

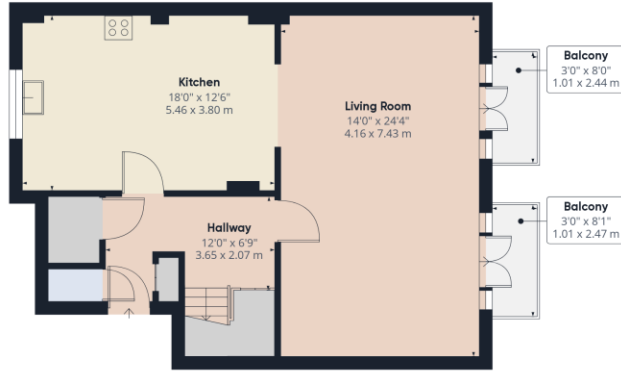
## AT A GLANCE

- Duplex penthouse apartment
- Three double bedrooms
- Undercroft gated parking
- Private balconies
- Communal gym and games room
- Council tax band E
- No onward chain









Ground Floor



Floor 1

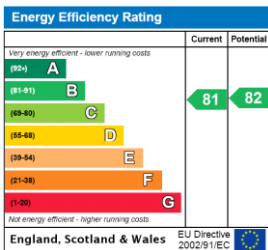
Approximate total area<sup>1)</sup>  
1428.59 ft<sup>2</sup>  
132.72 m<sup>2</sup>

(1) Excluding balconies and terraces

While every attempt has been made to ensure accuracy, all measurements are approximate, not to scale. This floor plan is for illustrative purposes only.

GIRAFFE360

This floorplan is for illustration purposes only and is not to scale. The position and size of doors, windows, appliances and other features are approximate.



**Tenure:** Leasehold

**Term:** 134 year and 11 months

**Service Charge:** £5180 per annum

**Ground Rent:** £ 200 Annually (subject to increase)

**Council Tax Band:** E

Where no figures are shown, we have been unable to ascertain the information. All figures that are shown were correct at the time of printing.

**Winkworth**

Reading | 0118 4022 300 | reading@winkworth.co.uk

for every step...

winkworth.co.uk

Winkworth wishes to inform prospective buyers and tenants that these particulars are a guide and act as information only. All our details are given in good faith and believed to be correct at the time of printing but they don't form part of an offer or contract. No Winkworth employee has authority to make or give any representation or warranty in relation to this property. All fixtures and fittings, whether fitted or not are deemed removable by the vendor unless stated otherwise and room sizes are measured between internal wall surfaces, including furnishings.