



MANOR WAY, BURNHAM-ON-SEA, SOMERSET, TA8
£550,000 FREEHOLD

Winkworth



A fantastic four bedroom, 2 bathrooms detached house located on a no through road in the hugely popular New Manor Court.

Entrance hall | kitchen and dining room | living room | utility room.

Principle bedroom with ensuite | 3 further bedrooms | family bathroom.

Garden | Double garage | off street parking.

Potential building plot

With an extended garden/potential building plot that has laid storm and foul drains ready for connection, should another building be erected on the side plot.

The property is tucked away within the popular New Manor Court development which is Just 0.4 miles from Berrow Beach and just 1.7 miles from Burnham and Berrow Golf Club.

The ground floor accommodation comprises, an open-plan kitchen flooded with natural light from the dual aspect windows and French doors providing access to the rear garden, an understairs storage cupboard, a built in Candy double oven, an Indesit induction hob set into the granite effect work surface and integrated fridge/freezer and Sharp dishwasher. A utility room with sink set into a work top, cupboard housing the combi boiler, space for a washing machine and dryer, door providing rear access & ground floor WC. The second reception room can be used as a study or separate lounge to suit your needs.



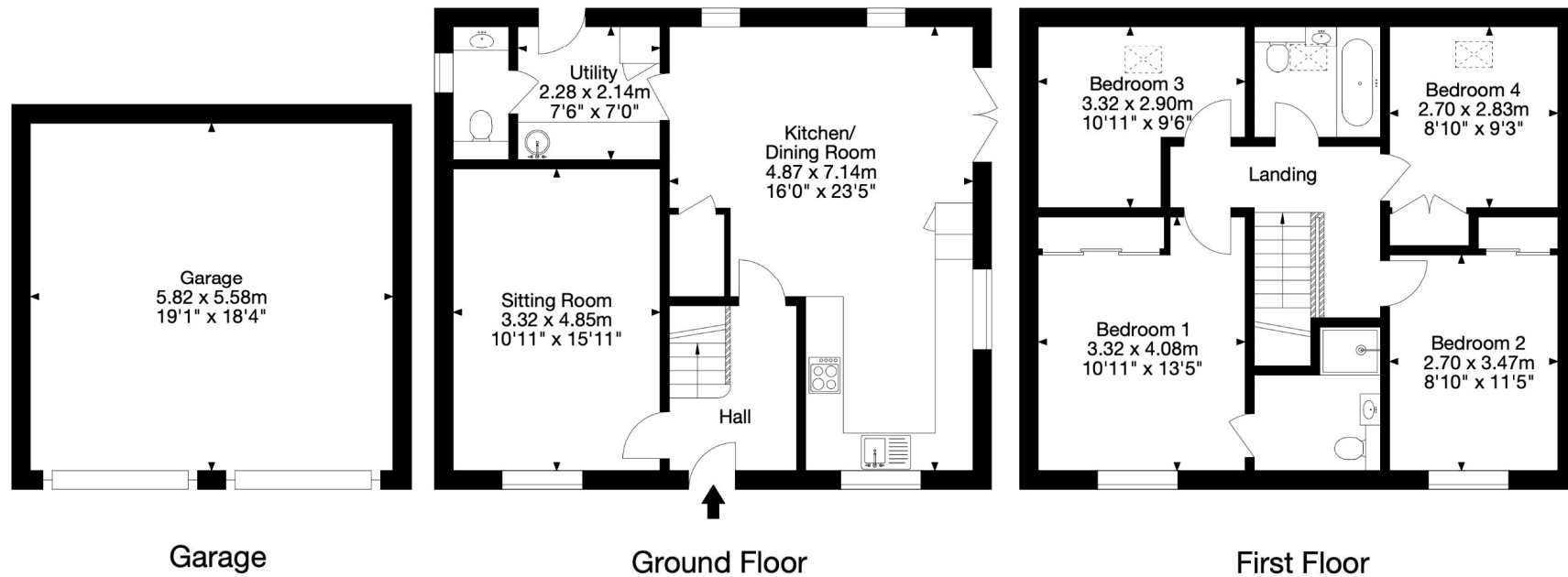
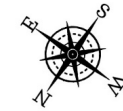
Upstairs, you'll discover a landing providing access to four spacious bedrooms, the master bedroom with en-suite shower room. 2 of the bedrooms have fitted wardrobes. Finally, there is a gorgeous family bathroom fitted with a modern bathroom suite and boasts a bath with shower over and Velux window.

Externally, the property boasts an enclosed garden mainly laid to lawn with a patio area and rear gate providing access to the double garage with electric up and over doors, alarm and two off-street parking spaces.

Freehold



1 New Manor Court, Berrow TA8 2RG
 Gross Internal Area (Approx.)
 Main House = 119 sq m / 1,280 sq ft
 Garage = 32 sq m / 344 sq ft
 Total Area = 151 sq m / 1,624 sq ft



Capture Property Marketing 2024. Drawn to RICS guidelines. Not drawn to scale. Plan is for illustration purposes only. All features, door openings, and window locations are approximate. All measurements and areas are approximate and should not be relied on as a statement of fact.

Capture.

Bath | 01225 829 000 | bath@winkworth.co.uk

winkworth.co.uk

Winkworth wishes to inform prospective buyers and tenants that these particulars are a guide and act as information only. All our details are given in good faith and believed to be correct at the time of printing but they don't form part of an offer or contract. No Winkworth employee has authority to make or give any representation or warranty in relation to this property. All fixtures and fittings, whether fitted or not are deemed removable by the vendor unless stated otherwise and room sizes are measured between internal wall surfaces, including furnishings.

