



WILTON CRESCENT, SW1
£6,500 PCM

ELEGANT FIRST FLOOR LATERAL APARTMENT WITH HIGH
CEILINGS, PERIOD FEATURES AND EXCELLENT PROPORTIONS

Winkworth

[winkworth.co.uk/estate-agents/knightsbridge-chelsea](https://www.winkworth.co.uk/estate-agents/knightsbridge-chelsea)

See things differently.

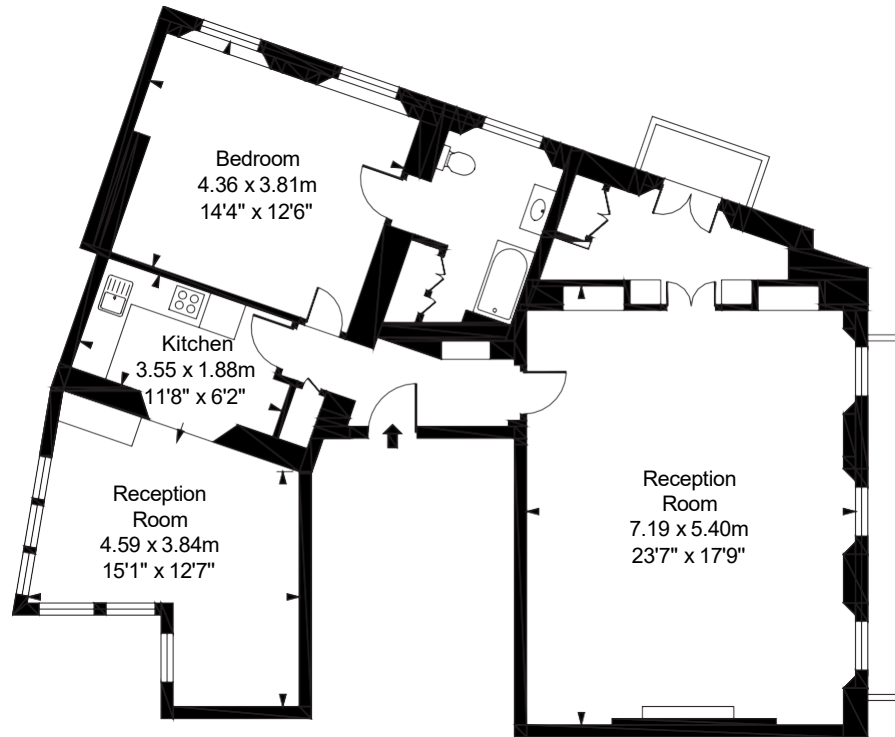
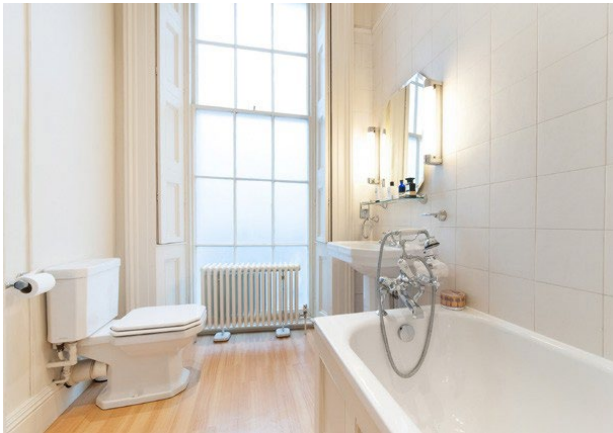
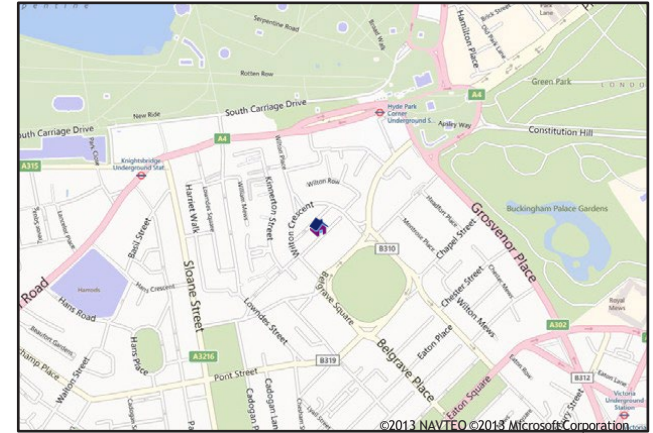


WILTON CRESCENT, SW1X

EPC Rating - E

Total: 99.55 sq m / 1072 sq ft

- *First Floor*
- *Private Balcony*
- *High Ceilings & Period Features*
- *Large Reception Room*
- *Kitchen & Breakfast Room*
- *Bedroom & En-suite*
- *City of Westminster*
- *Administration Fees Will Apply*



This floorplan is for illustration purposes only and is not to scale. The position and size of doors, windows, appliances and other features are approximate.



Winkworth Knightsbridge | 020 7589 6616 | knightsbridge@winkworth.co.uk

First Floor

Winkworth