



CHIPPING COURT, MURRAIN ROAD, LONDON, N4
£650,000 LEASEHOLD

A BRIGHT, TWO DOUBLE BEDROOM, FIFTH FLOOR APARTMENT NEXT TO CLISSOLD PARK.

Islington | 0207 354 2480 | islington@winkworth.co.uk

Winkworth

winkworth.co.uk

See things differently



DESCRIPTION:

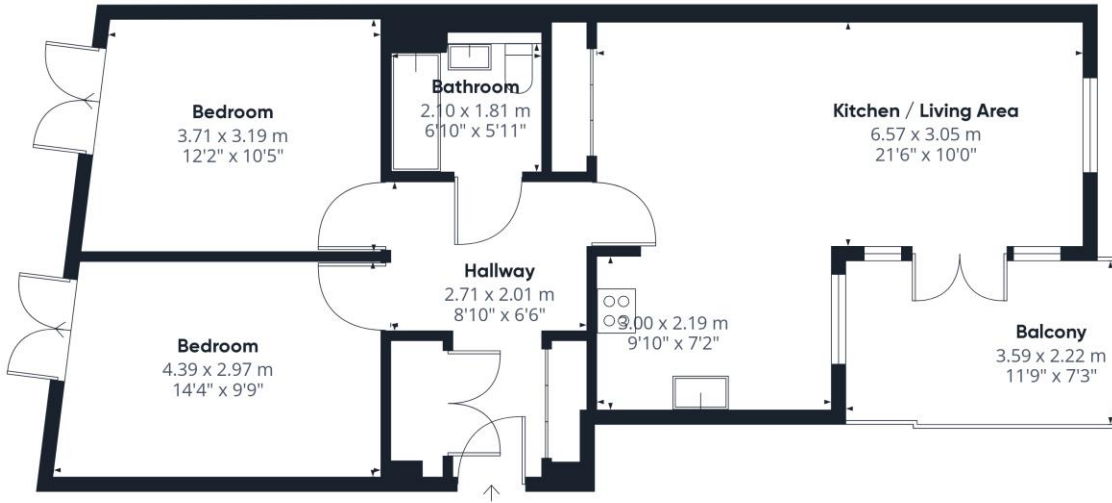
A beautiful, two double bedroom apartment located on the 5th floor of this modern block in N4. The open-plan living room and kitchen is cleverly arranged and leads directly out into a balcony which acts much like a sunroom and has views stretching far. Two double bedrooms overlook the peaceful communal gardens while the property is completed with ample storage cupboards and a modern family bathroom. The property is presented in excellent condition throughout, secure bike storage and benefits from a lift taking you directly to the 5th floor.

Chipping Court is located in between Brownswood Road and Green Lanes allowing for easy access to the green spaces of Finsbury Park, Clissold Park and Woodberry Wetland nature reserve. A variety of shops, cafes and eateries are located on Blackstock Road and Stoke Newington Church Street along with a selection of bus routes. The nearest public transport link is Arsenal Underground Station (Piccadilly Line) and Manor House (Piccadilly Line) 0.6 miles, while Finsbury Park Station, (Victoria, Piccadilly and over ground rail services) 0.7 miles, according to google.

Winkworth



Winkworth



Approximate total area⁽¹⁾
67.79 m²
729.69 ft²

Balconies and terraces
7.79 m²
83.85 ft²

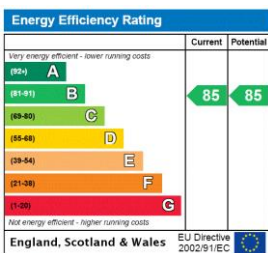
(1) Excluding balconies and terraces

While every attempt has been made to ensure accuracy, all measurements are approximate, not to scale. This floor plan is for illustrative purposes only.

Calculations are based on RICS IPMS 3C standard.

GIRAFFE360

This floorplan is for illustration purposes only and is not to scale. The position and size of doors, windows, appliances and other features are approximate.



Islington | 0207 354 2480 | islington@winkworth.co.uk



winkworth.co.uk

See things differently

Winkworth wishes to inform prospective buyers and tenants that these particulars are a guide and act as information only. All our details are given in good faith and believed to be correct at the time of printing but they don't form part of an offer or contract. No Winkworth employee has authority to make or give any representation or warranty in relation to this property. All fixtures and fittings, whether fitted or not are deemed removable by the vendor unless stated otherwise and room sizes are measured between internal wall surfaces, including fumishings.