

EATON WAY, HERTFORDSHIRE, WD6

**£300,000 SHARE OF FREEHOLD**

## CHAIN FREE TWO BEDROOM TWO BATHROOM FIRST FLOOR APARTMENT

Borehamwood | 020 8953 8899 | borehamwood@winkworth.co.uk



### DESCRIPTION:

This two bedroom two bathroom first floor apartment is situated on a popular development close to local shops and amenities. Located Just 1 mile to Elstree & Borehamwood Overground Station as well as the High Street with its array of restaurants and shops.

The property is offered in very good condition having recently had new carpets laid as well as being newly decorated.

Benefits include good size living room, kitchen, master bedroom with en-suite shower room, second bedroom, family bathroom, Communal Gardens with children's play area and one allocated parking space along with visitors parking.

### AT A GLANCE

- 2 Bedrooms
- Share Of Freehold
- 602 Square Feet
- Communal Gardens With Play Area
- Ensuite Shower Room
- Allocated Parking Space
- Double Glazed
- Gas Central Heating





## Fitzwilliam Court, Eaton Way, WD6

Approximate Gross Internal Area = 55.9 sq m / 602 sq ft

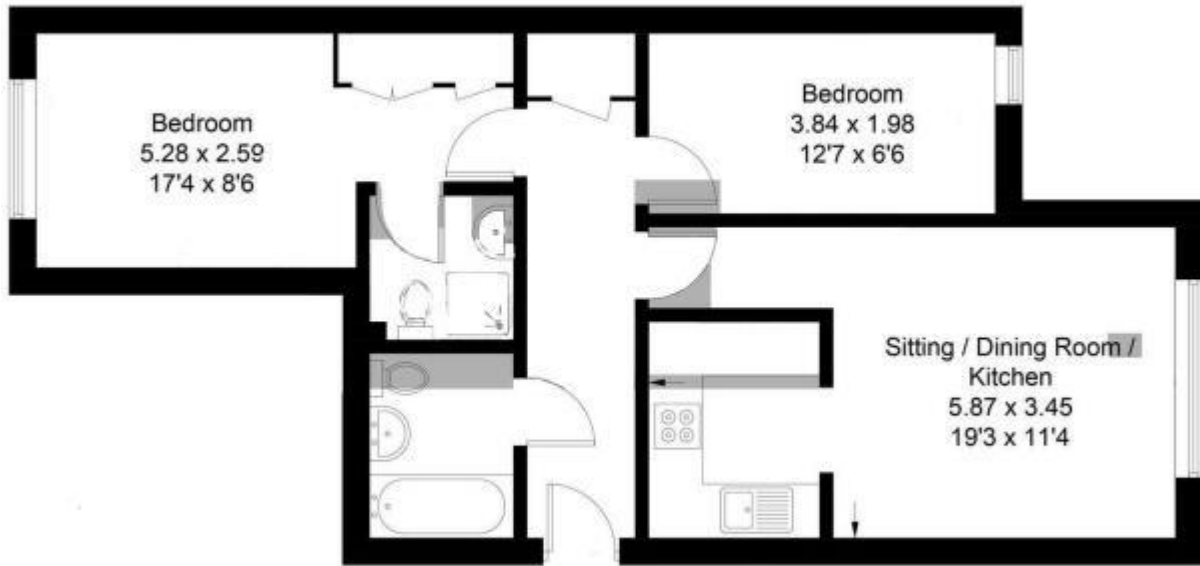


Illustration for identification purposes only, measurements are approximate, not to scale. floorplansUsketch.com © (ID779834)

This floorplan is for illustration purposes only and is not to scale. The position and size of doors, windows, appliances and other features are approximate.

Energy Efficiency Rating		Current	Potential
Very energy efficient - lower running costs			
(92-100)	A		
(81-91)	B		
(69-80)	C	77	79
(55-68)	D		
(39-54)	E		
(21-38)	F		
(1-20)	G		
Not energy efficient - higher running costs			
England, Scotland & Wales		EU Directive 2002/91/EC	

**Tenure:** Share of Freehold

**Term:** 130 year and 8 months

**Service Charge:** £1710.22 per annum

**Ground Rent:** £ 0 Annually (subject to increase)

**Council Tax Band:** D

Where no figures are shown, we have been unable to ascertain the information. All figures that are shown were correct at the time of printing.