



MAYBURY GARDENS, LONDON, NW10
£690,000 SHARE OF FREEHOLD

A FULLY EXTENDED THREE DOUBLE BEDROOM, TWO BATHROOM, SPLIT LEVEL FLAT, FINISHED TO A HIGH STANDARD AND SPECIFICATION THROUGHOUT.

Kensal Rise & Queens Park | 0208 960 4947 | kensalrise@winkworth.co.uk





LOCATION:

Maybury Gardens is a pretty street well located for both Willesden Green and Dollis Hill tube stations (Jubilee Line). Willesden Green High Road is close by offering a range of shops, bars and restaurants. For recreation, Roundwood Park and King Edward Parks are a short walk away.





DESCRIPTION:

Following a meticulous full renovation in recent years, as well as loft conversion, we are pleased to offer this stunning end of terrace Victorian split level conversion flat.

On the first floor, the flat comprises of a full width formal reception room with period feature fireplace, a double bedroom with fitted wardrobes, bathroom which is fully tiled with modern fittings including underfloor heating. To the rear of the flat is a spacious kitchen and dining area, ideal for entertaining. The kitchen has white high gloss handle-less units, with an overhang for a breakfast bar. The loft has been converted to the maximum capacity, creating two double bedrooms (one with Juliet balcony) and a second bathroom.

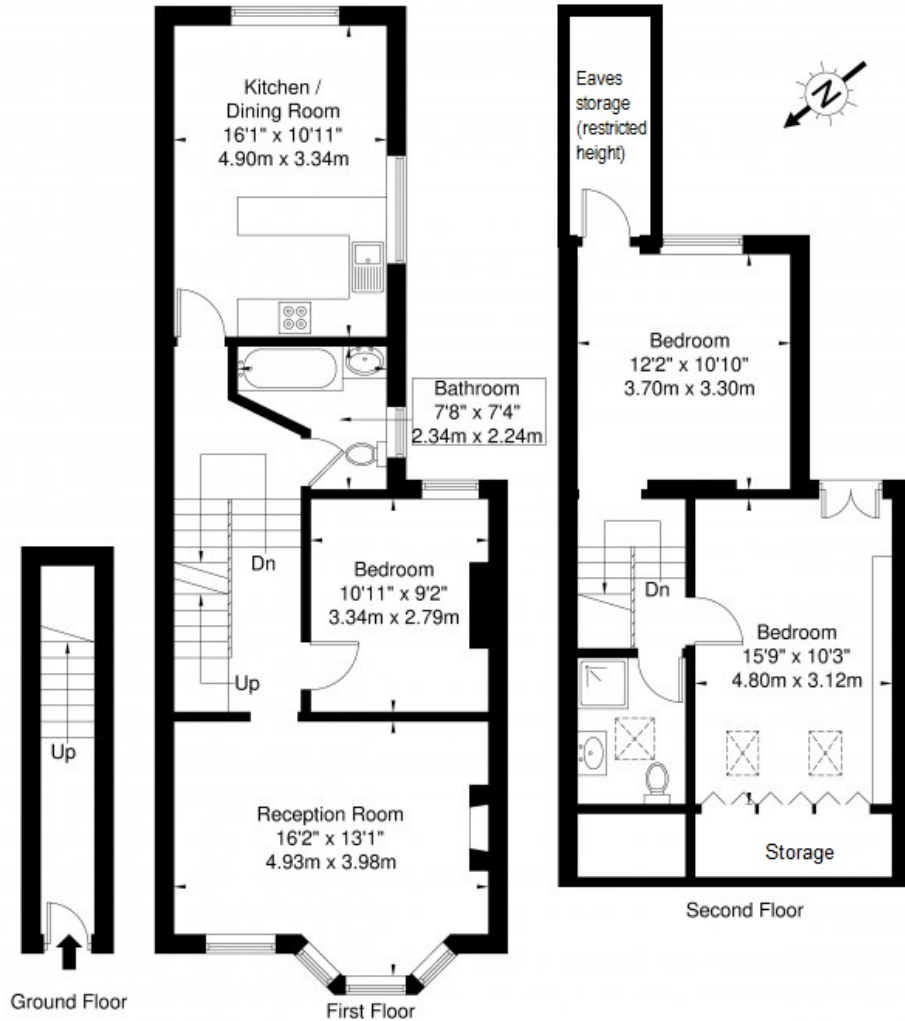
Viewing comes highly recommended.

TENURE - Share of Freehold.

Winkworth

Maybury Gardens NW10 2LY

Approx. Gross Internal Area = 107.1 sq m / 1153 sq ft



Ref

Copyright THEBLÉUPLAN

Disclaimer : Floor plan measurements are approximate and are for illustrative purposes only. While we do not doubt the floor plan accuracy and completeness, you or your advisors should conduct a careful, independent investigation of the property in respect of monetary valuation

This floorplan is for illustration purposes only and is not to scale. The position and size of doors, windows, appliances and other features are approximate.

Kensal Rise & Queens Park | 0208 960 4947 | kensalrise@winkworth.co.uk

Winkworth

winkworth.co.uk

See things differently

winkworth wishes to inform prospective buyers and tenants that these particulars are a guide and act as information only. All our details are given in good faith and believed to be correct at the time of printing but they don't form part of an offer or contract. No winkworth employee has authority to make or give any representation or warranty in relation to this property. All fixtures and fittings, whether fitted or not are deemed removable by the vendor unless stated otherwise and room sizes are measured between internal wall surfaces, including furnishings.