



CARRARA WHARF, SW6 £2,500 PER MONTH FURNISHED

A spacious and beautifully bright two-bedroom, two-bathroom, apartment boasting stunning riverside views, set within a charming, gated development just moments from Putney Bridge Underground Station.

Fulham & Parsons Green | 020 7731 3388 | fulham@winkworth.co.uk

Tenant Fees Apply: Details of fees for tenant referencing, tenancy agreement admin fees and renewal fees are available on the Winkworth website and the link can be found with the displayed rent for the property. Tenants should ensure they are fully conversant with these upfront fees and other costs that are involved at the outset of the tenancy before making an offer to rent and your local Winkworth office will provide written details upon request.

winkworth.co.uk

Winkworth

for every step...



This exceptional home features a light-filled and airy reception room with an open-plan, fully fitted kitchen, seamlessly leading to a terrace overlooking the river—perfect for relaxing or entertaining. The terrace leads round to expansive and beautiful communal gardens.

The main bedroom benefits from a sleek en-suite bathroom room, while the second double bedroom is generously sized and served by a modern shower-room with utility area with a washing machine and separate tumble dryer.

There is a secure underground car parking space.

Nestled in a tranquil part of Fulham with a charming village-like atmosphere, Carrara Wharf offers the best of both worlds—peaceful riverside living with the vibrant bars, restaurants, and amenities of Putney and Fulham close by. The area also boasts excellent green spaces, with both Bishops Park and Hurlingham Park just a short stroll away.

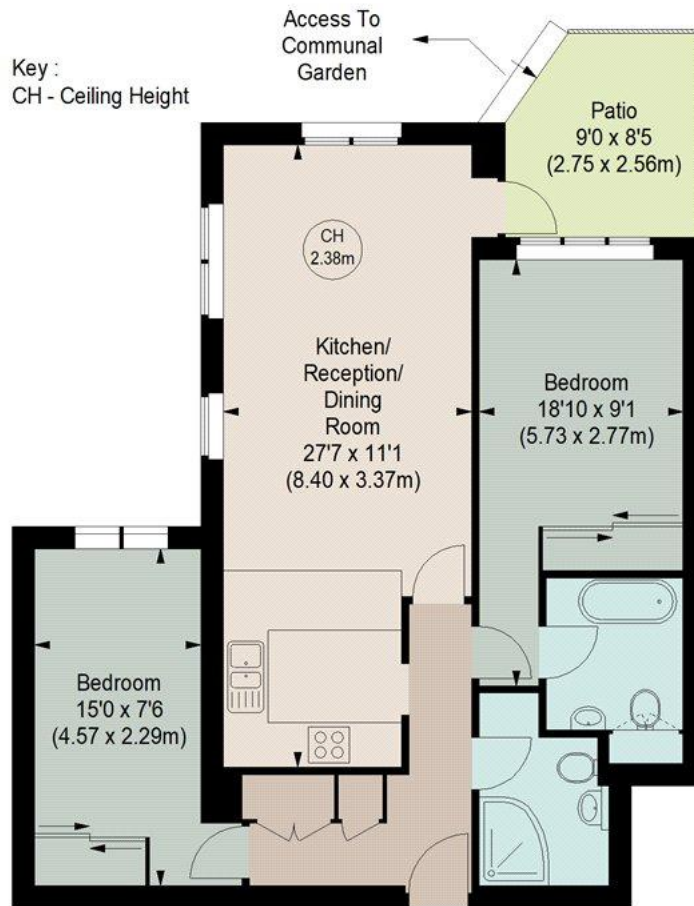




CHANTRY COURT, SW6

Approximate gross internal area

732 sq ft / 68.0 sq m



GROUND FLOOR

Although every attempt has been made to ensure accuracy, all measurements are approximate.
This floorplan is for illustrative purposes only and not to scale.
Measured in accordance with RICS standards.

This floorplan is for illustration purposes only and is not to scale. The position and size of doors, windows, appliances and other features are approximate.

Fulham & Parsons Green | 020 7731 3388 | fulham@winkworth.co.uk

Winkworth

for every step...

winkworth.co.uk

Winkworth wishes to inform prospective buyers and tenants that these particulars are a guide and act as information only. All our details are given in good faith and believed to be correct at the time of printing but they don't form part of an offer or contract. No Winkworth employee has authority to make or give any representation or warranty in relation to this property. All fixtures and fittings, whether fitted or not are deemed removable by the vendor unless stated otherwise and room sizes are measured between internal wall surfaces, including furnishings.