



ANERLEY ROAD, SE20
£270,000 LEASEHOLD

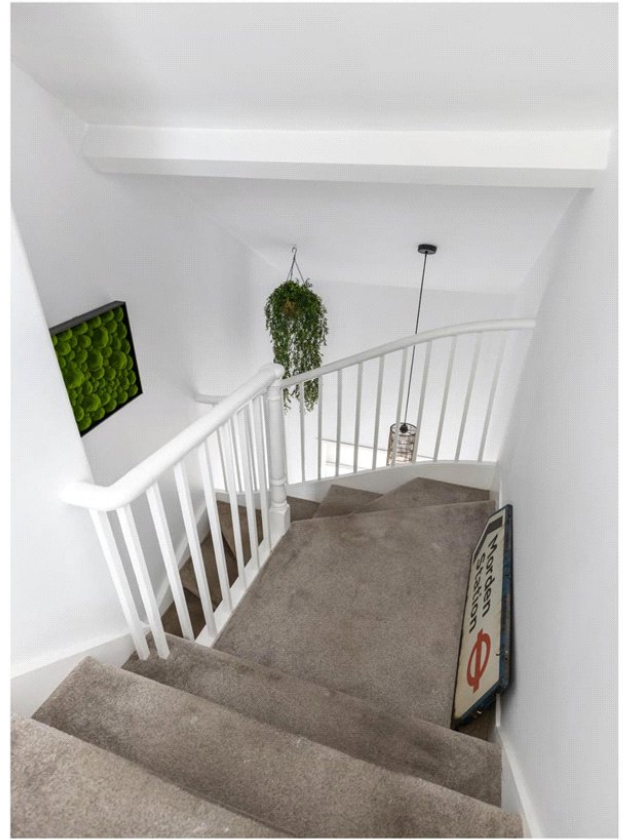
NEWLY REFURBISHED ONE BEDROOM SPLIT LEVEL FLAT FOR SALE ON ANERLEY ROAD

Crystal Palace | 02038693222 | crystalpalace@winkworth.co.uk

Winkworth

for every step...

winkworth.co.uk



DESCRIPTION:

Winkworth is pleased to offer this recently renovated one-bedroom split level flat for sale on Anerley Road. The property has been finished to a modern standard throughout, boasts an abundance of natural light and offers versatile living dependant on the needs of the buyer.

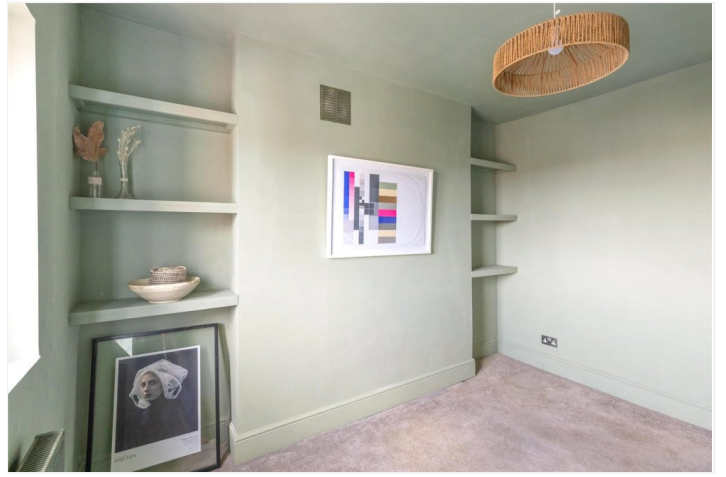
The property is split over two floors and comprises open plan kitchen and dining room with breakfast bar and integrated appliances, contemporary shower room, a further reception room which could also be used as a home office and second bedroom, on the top floor you will find a spacious double bedroom with dual aspect windows. The property has been well looked after by the current owners, making this home feel warm and inviting whilst simultaneously being spacious and comfortable, perfect for first-time buyers.

Anerley Road offers easy access to local amenities such as Crystal Palace Park, and other lovely local shops and eateries found on 'The Triangle'. The property also benefits from close access to transport links at Anerley Station, with a convenient and direct connection to central London.

AT A GLANCE

- One bedroom
- Split level flat
- Open plan kitchen & dining room
- Separate reception or home office
- Spacious bedroom
- Recently refurbished
- Leasehold - 89 years 10 months
- Bromley Council Tax Band C







This floorplan is for illustration purposes only and is not to scale. The position and size of doors, windows, appliances and other features are approximate.

Tenure: Leasehold

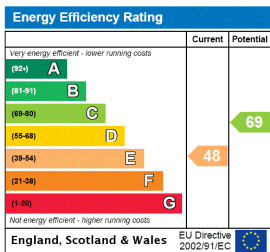
Term: 89 years and 10 months

Service Charge: No fixed amount

Ground Rent: None

Council Tax Band: C

Where no figures are shown, we have been unable to ascertain the information. All figures that are shown were correct at the time of printing.



Crystal Palace | 02038693222 | crystalpalace@winkworth.co.uk



for every step...

winkworth.co.uk

Winkworth wishes to inform prospective buyers and tenants that these particulars are a guide and act as information only. All our details are given in good faith and believed to be correct at the time of printing but they don't form part of an offer or contract. No Winkworth employee has authority to make or give any representation or warranty in relation to this property. All fixtures and fittings, whether fitted or not are deemed removable by the vendor unless stated otherwise and room sizes are measured between internal wall surfaces, including furnishings.