

A bright one-bedroom property located on the first floor of a purpose-built block in the heart of Wandsworth, boasting light wooden flooring throughout.

Upon entering, you are welcomed by an open-plan reception room, flooded with natural light and offering plenty of space for both relaxing and dining. This room has so much character with blue feature walls on both ends, as well as trendy spotlight bars illuminating the space. Adjacent is a separate kitchen, fully equipped with modern appliances and ample storage.

The spacious double bedroom mirrors the style of the reception room, with a blue feature wall and spotlight bars, and benefits from built-in wardrobes and shelves around the bed, creating a luxurious feel. A convenient storage closet and a bathroom with shower bath complete this apartment.

Bartholomew Close is conveniently located just moments away from Southside Shopping Centre, and the array of amenities Wandsworth has to offer. Transport links are excellent with Wandsworth Town Station (0.5 miles) and Clapham Junction (0.7 miles) nearby.



Score	Energy rating	Current	Potential
92+	A		
81-91	B		
69-80	C	80 C	80 C
55-68	D		
39-54	E		
21-38	F		
1-20	G		

### Features

- One Bedroom
- Residents Parking
- S/C approx. £1,454
- GR: Peppercorn

### Leasehold

**172 years**

### Internal Area

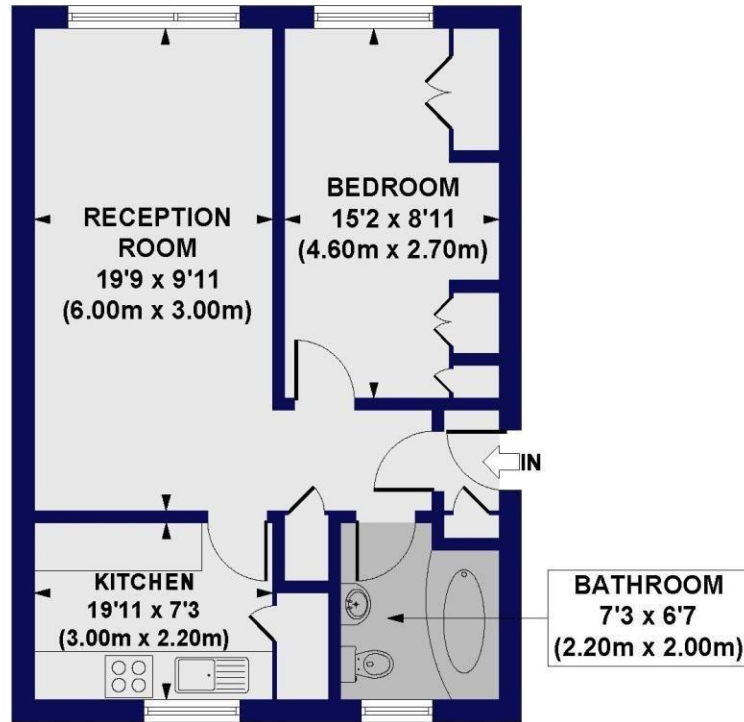
**Total 526 sq. ft/ 48.85 sq. m**

### Price

**£350,000**

## Bartholomew Close, SW18

Approx. Gross Internal Floor Area 526 sq. ft / 48.85 sq. m



FIRST FLOOR

All measurements of walls, doors, windows, fittings and appliances, including their size and location, are shown as standard sizes and do not constitute any warranty or representation by the seller, their agent or CP Creative. Any intending purchaser must satisfy himself by inspection or otherwise as to the correctness of the information contained in these plans. This plan is for illustrative purposes only and should be used as such by any prospective purchasers.