



FLAT 12, THRESHING HOUSE, HARVEST PATH, ARBORFIELD, WOKINGHAM, RG40 4AF
£275,000 LEASEHOLD

**A 1 BEDROOMED TOP FLOOR APARTMENT ON
THIS POPULAR MODERN DEVELOPMENT
OFFERED WITH NO ONWARD CHAIN.**

Winkworth

Wokingham | 01189 072777 | wokingham@winkworth.co.uk

for every step...

winkworth.co.uk



DESCRIPTION:

Finchwood Park is set near the charming villages of Finchampstead and Arborfield.

Explore the 140 acres of green space on your doorstep, ideal for walks, picnics, and bike rides. And, with a range of shops and pubs nearby, you'll have everything you need within easy reach.

Update charges from 1st April 2025

Management Charge Total £1467.20

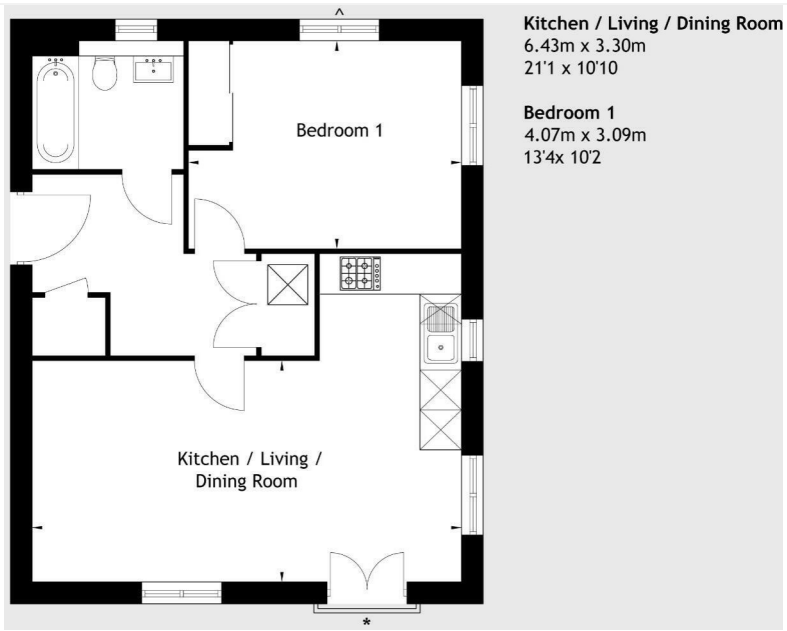
Ground Rent £329.84

Abri have a 'no pets policy'

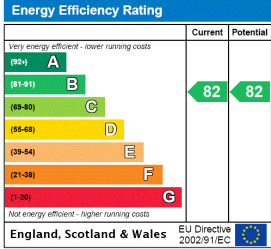
AT A GLANCE

- Modern 1 bedroom apartment
- Fitted kitchen with appliances
- Council tax band B Wokingham
- Broad band basic 24Mbps
- Satellite/Fibre Availability Sky & BT
- Mobile coverage O2, EE, Vodafone & Three
- 990 years lease from 2023
- Parking space
- No pets





This floorplan is for illustration purposes only and is not to scale. The position and size of doors, windows, appliances and other features are approximate.



Wokingham | 01189 072777 | wokingham@winkworth.co.uk

winkworth.co.uk

for every step...

Winkworth wishes to inform prospective buyers and tenants that these particulars are a guide and act as information only. All our details are given in good faith and believed to be correct at the time of printing but they don't form part of an offer or contract. No Winkworth employee has authority to make or give any representation or warranty in relation to this property. All fixtures and fittings, whether fitted or not are deemed removable by the vendor unless stated otherwise and room sizes are measured between internal wall surfaces, including furnishings.

We are required by law to conduct anti-money laundering checks on all those buying a property. Whilst we retain responsibility for ensuring checks and any ongoing monitoring are carried out correctly, the initial checks are carried out on our behalf by Landmark who will contact you once you have had an offer accepted on a property you wish to buy. The cost of these checks is £15 (plus VAT) per person and this will need to be paid by you in advance of us issuing a memorandum of sale, directly to Landmark, and is non-refundable.