



Denbigh Street, SW1V

£3,300 PER MONTH

FURNISHED, UNFURNISHED

AT A GLANCE

- Two bedrooms
- Two bathrooms
- East facing garden
- Integrated kitchen
- Large living room
- Unfurnished

Winkworth

for every step...



Energy Efficiency Rating		
	Current	Potential
Very energy efficient - lower running costs		
(92+) A		
(81-91) B		
(69-80) C		
(55-68) D	67	76
(39-54) E		
(21-38) F		
(1-20) G		
Not energy efficient - higher running costs		
England, Scotland & Wales	EU Directive 2002/91/EC	

DENBIGH STREET, SW1V

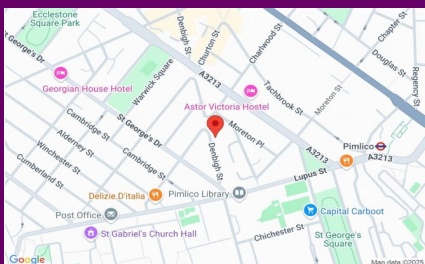
£3,300 PER MONTH

FURNISHED, UNFURNISHED

A gorgeous, two bedroom, two bath two bed, garden flat on Denbigh Street spanning over 700 sq ft. The property consists of a separate, fully integrated kitchen with plenty of worktop space, dishwasher, washer dryer and large fridge/freezer - a large living room with inbuilt storage and a original fireplace, a master bedroom with ample inbuilt storage, ensuite and access out onto the east facing garden, a second family bathroom with rainfall shower bath and a further second bedroom which would also be perfect as a study - also with access out onto the patio'd garden, which benefits from the midday sun.

The apartment is offered on a unfurnished basis and also benefits from being compatible with Sky Fibre Full

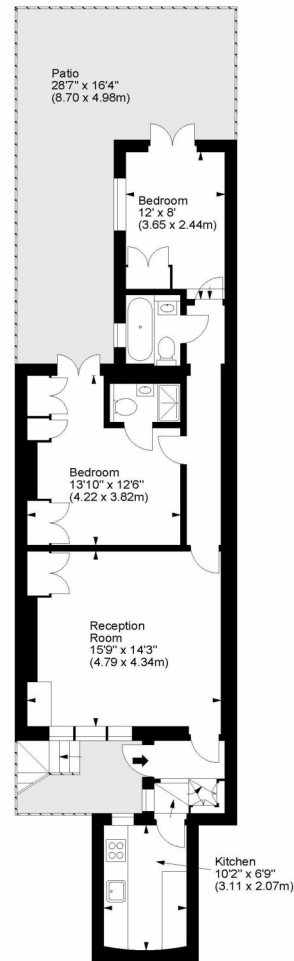
The property is conveniently located inbetween both Pimlico underground station (0.3 miles) and Victoria Station (0.7) where there is a wide selection of transport links, coach, overground, Underground and several different bus routes. A selection of shops, restaurants, bars and cafes can be found nearby on the desirable Moreton Triangle and Wilton Road.



winkworth wishes to inform prospective buyers and tenants that these particulars are a guide and act as information only. All our details are given in good faith and believed to be correct at the time of printing but they don't form part of an offer or contract. No winkworth employee has authority to make or give any representation or warranty in relation to this property. All fixtures and fittings, whether fitted or not are deemed removable by the vendor unless stated otherwise and room sizes are measured between internal wall surfaces, including fireplaces.

Denbigh Street, SW1

Approx. Gross Internal Area
708 Sq Ft - 65.78 Sq M



Lower Ground Floor

For illustration purposes only. Not to scale.
All measurements are taken and shown at floor level.
www.r3photography.co.uk © Photography / Floor Plans / Lease Plans / EPCs



Pimlico & Westminster | 020 7828 1786 |
pimlico@winkworth.co.uk

winkworth.co.uk/pimlico

Winkworth

for every step...