



WRENTHAM AVENUE, LONDON, NW10  
**£850,000 SHARE OF FREEHOLD**

**A BEAUTIFUL, THREE BEDROOM SPLIT LEVEL  
APARTMENT ON WRENTHAM AVENUE, ONE OF THE  
MOST DESIRABLE STREETS IN THE AREA.**

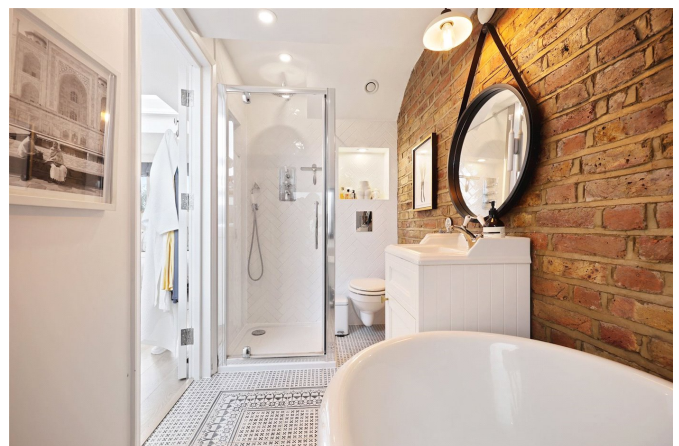
Kensal Rise & Queens Park | 0208 960 4947 | [kensalrise@winkworth.co.uk](mailto:kensalrise@winkworth.co.uk)





## LOCATION:

Wrentham Avenue is a very sought after street just five minutes north of Queens Park. There is a great community feel which draws buyers to the street. The property is walking distance from Chamberlayne Road and Salisbury Road which offer an array of amenities, coffee shops and restaurants. Buyers have multiple transport options at either Queens Park or Kensal Rise Stations, the latter only three minutes away. Queens Park itself is also a huge attraction whether you want to take a gentle stroll, enjoy a game of tennis or mini golf, or take your children to the playground or petting zoo. It is also a scenic cut through to the Queens Park tube stop and the weekly Farmers' Market. There is a range of excellent state and independent schools and nurseries in the area.



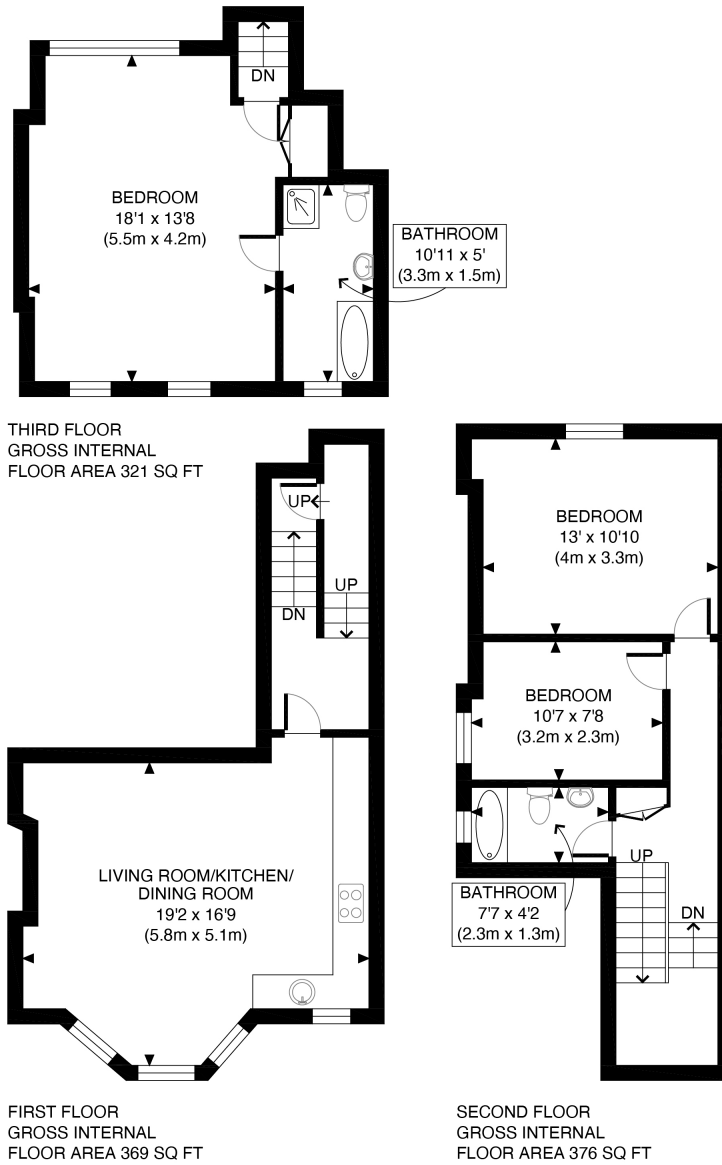
**Winkworth**



**DESCRIPTION:**

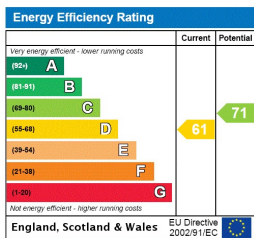
This stunning property measures 1066 sq.ft with accommodation arranged over three split levels including a superb master bedroom in the loft conversion that has an en-suite bathroom. There are two further bedrooms on the first floor serviced by a contemporary family bathroom and a delightful, bright and airy open plan living space at the front of the flat. The recently renovated property is in excellent condition throughout and is offered to the market with a long lease and share of the freehold.





APPROX. GROSS INTERNAL FLOOR AREA 1066 SQ FT / 99 SQM		Wrentham Av	
Disclaimer: Floor plan measurements are approximate and are for illustrative purposes only. While we do not doubt the floor plan accuracy and completeness, you or your advisors should conduct a careful, independent investigation of the property in respect of monetary valuation			
		date	29/04/24

This floorplan is for illustration purposes only and is not to scale. The position and size of doors, windows, appliances and other features are approximate.



Kensal Rise & Queens Park | 0208 960 4947 | kensalrise@winkworth.co.uk



winkworth.co.uk

See things differently

winkworth wishes to inform prospective buyers and tenants that these particulars are a guide and act as information only. All our details are given in good faith and believed to be correct at the time of printing but they don't form part of an offer or contract. No winkworth employee has authority to make or give any representation or warranty in relation to this property. All fixtures and fittings, whether fitted or not are deemed removable by the vendor unless stated otherwise and room sizes are measured between internal wall surfaces, including furnishings.