



NORMAN COURT, EAST DULWICH, LONDON, SE22
£375,000 LEASEHOLD

A WELL PRESENTED TWO DOUBLE BEDROOM APARTMENT IS SITUATED CLOSE TO DULWICH PARK.

Dulwich | 020 8299 2722 | dulwich@winkworth.co.uk

Tenure Leasehold TBC | Council Tax Band B – London Borough of Southwark | Service Charge £1,330pa | Ground Rent £25pa

winkworth.co.uk

Winkworth

See things differently



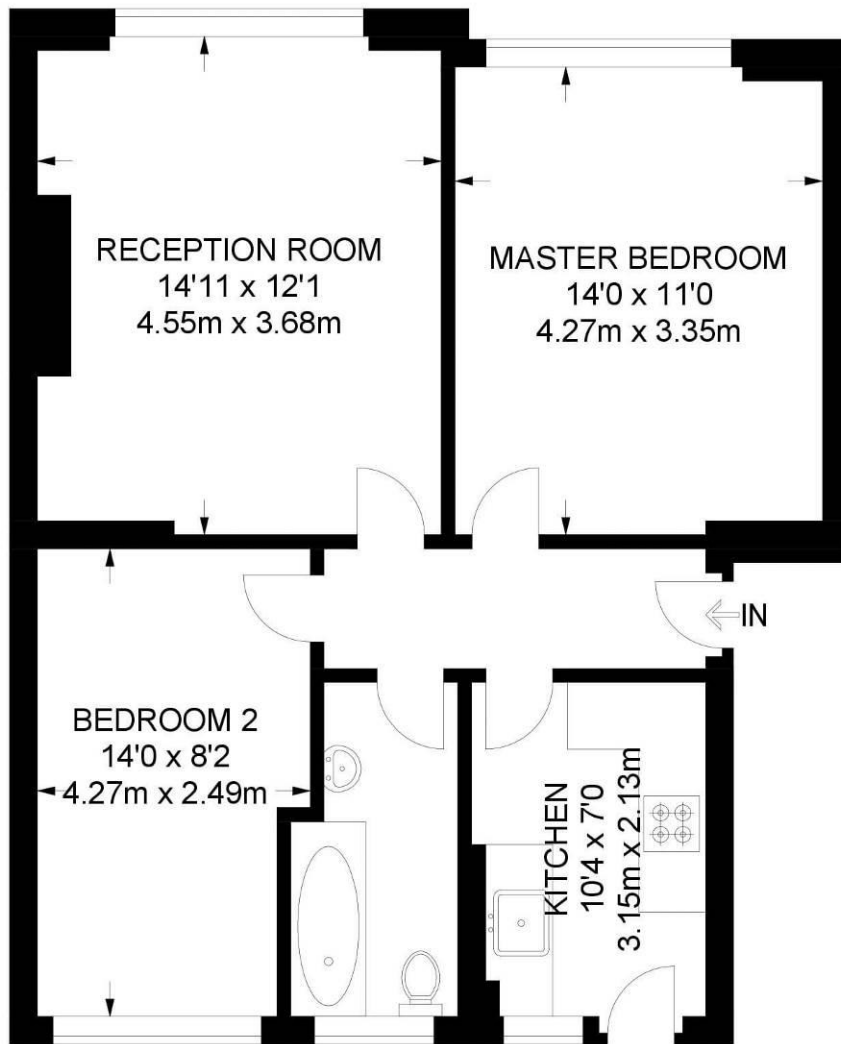
DESCRIPTION:

Well presented two double bedroom apartment is situated close to Dulwich Park. The property offers two good double bedrooms, modern kitchen and bathroom and a large and bright reception room. In addition, there is access to a superb communal garden space to rear. The is a fantastic property in a superb location with easy access to the bars, restaurants and shops on Lordship Lane, several transport link options including both East Dulwich and Forest Hill should the East London tube connections be required. This is a wonderful flat offered to the market chain free with early viewing recommended.

AT A GLANCE

- Two Double Bedrooms
- Second Floor Flat
- Spacious Reception
- Modern Kitchen & Bathroom
- Communal Garden & Close to Dulwich Park
- Leasehold
- 1930's Period Building
- Chain Free

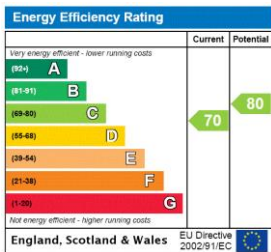




SECOND FLOOR

**APPROXIMATE GROSS INTERNAL AREA
628 SQ FT / 58.3 SQ M**

This floorplan is for illustration purposes only and is not to scale. The position and size of doors, windows, appliances and other features are approximate.



Dulwich | 020 8299 2722 | dulwich@winkworth.co.uk



winkworth.co.uk

See things differently

Winkworth wishes to inform prospective buyers and tenants that these particulars are a guide and act as information only. All our details are given in good faith and believed to be correct at the time of printing but they don't form part of an offer or contract. No Winkworth employee has authority to make or give any representation or warranty in relation to this property. All fixtures and fittings, whether fitted or not are deemed removable by the vendor unless stated otherwise and room sizes are measured between internal wall surfaces, including furnishings.