



Percy Road, London, W12

£1,750,000 Freehold

A fabulous, bright four bedroom Victorian family house on this popular street close to Askew Village.

Double Reception Room | Kitchen | 4 Bedrooms | Shower Room | En Suite Shower Room | Cloakroom | Garden | 1938 Sq Ft / 180 Sq M | Council Tax Band G | EPC Rating Band tbc

Winkworth



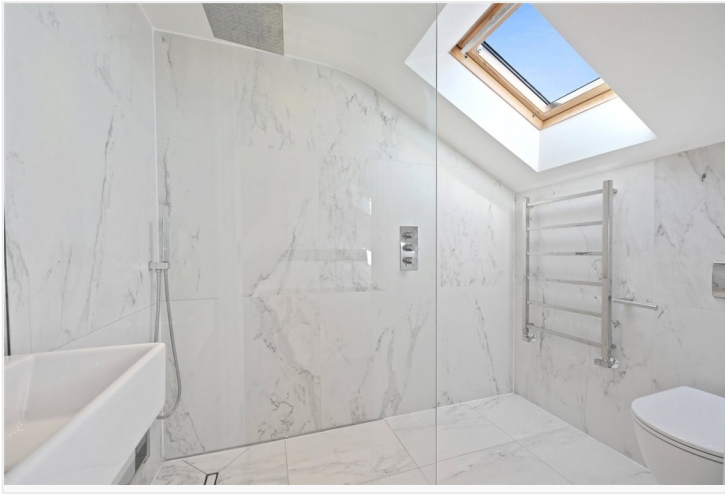
DESCRIPTION

Combining period features with contemporary minimalism, the house is an elegant restoration and is offered in excellent order. Natural materials and quality fittings resound throughout the property, including wooden floors, marble, slate and limestone.

Accommodation on the ground floor is comprised of entrance hall, cloakroom, utility room, double reception room and extended kitchen/dining room with tri-fold doors leading to garden. The hallway and reception room are floored in Rhodesian teak block parquet, with the bright bay-windowed reception room featuring original cornicing and ceiling roses, and twin Carrera marble fireplaces with 'living flame' gas fires, whilst plantation shutters offer privacy and security. The generously sized and bright kitchen/dining room comes with bespoke units and looks on to the secluded low-maintenance sun-trap garden.

The first floor is floored in natural-finish oak and offers a luxurious Alessi family shower room and three generous double bedrooms. A stone/Connemara marble fireplace completes the largest bedroom. The second floor offers the main bedroom suite, with shower room.

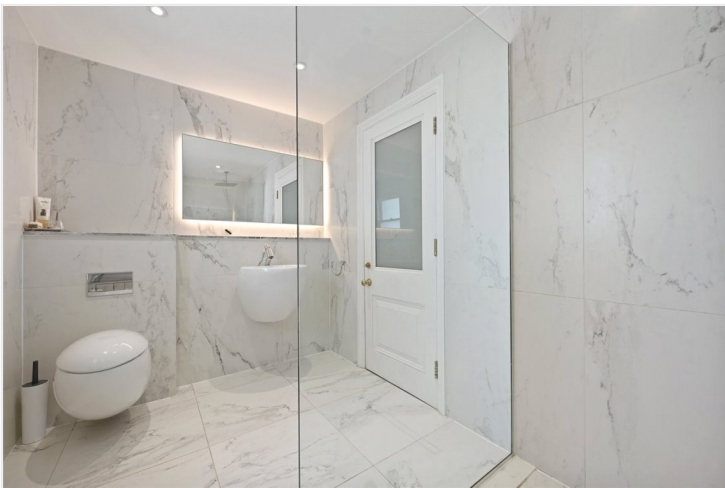




LOCAL AUTHORITY
Hammersmith & Fulham

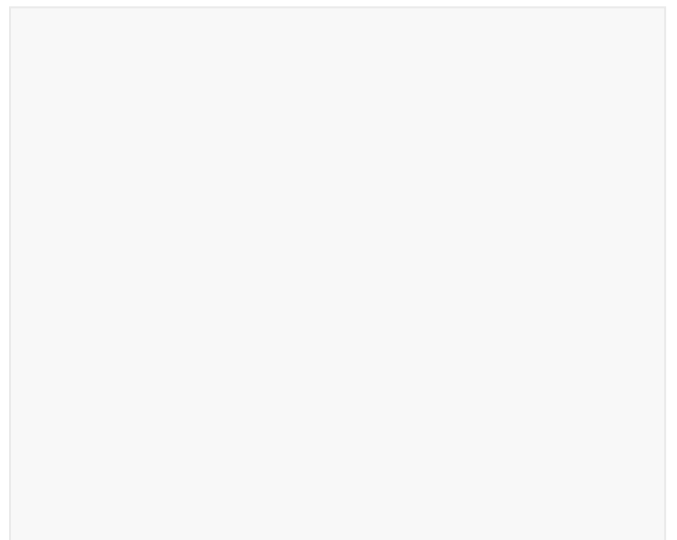
TENURE
Freehold.

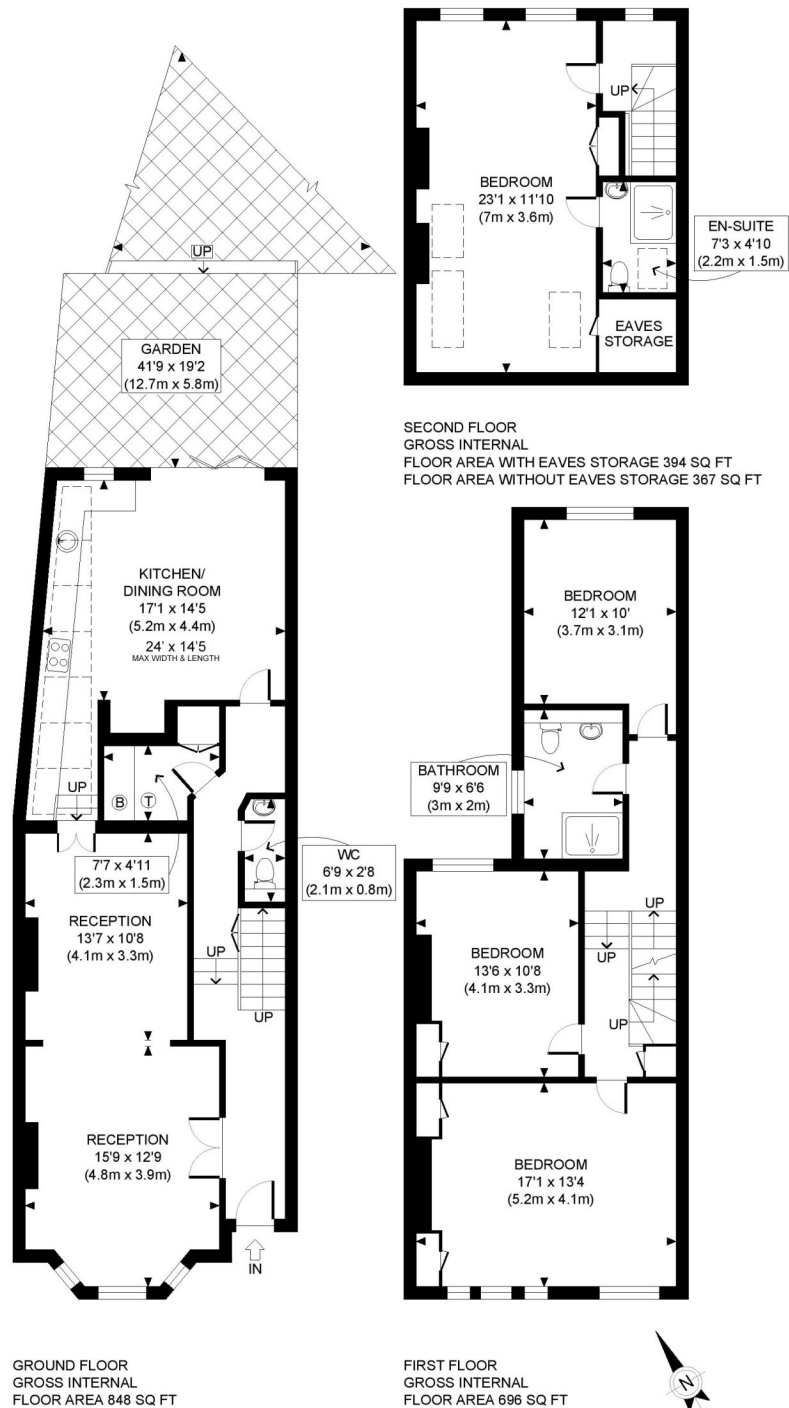
PRICE: £1,750,000 Freehold



LOCATION

Percy Road runs between Uxbridge Road and Askew Road, close to the various amenities of Askew Village. The area offers an eclectic mix of independent shops, cafes and restaurants, with the open space of Ravenscourt Park and the amenities of Chiswick High Road also within easy reach. Stamford Brook, Goldhawk Road and Ravenscourt Park stations are all within walking distance, whilst Shepherds Bush Central Line and London Overground stations are a little further away at Shepherds Bush Green.





Winkworth

This plan is for illustrative purposes only and should be used as such by any prospective client. Whilst every attempt has been made to ensure the accuracy of the Floor Plan contained here, measurements of the doors, windows, rooms and any other items are approximate and no responsibility is taken for any errors, omissions, or misstatement. The services, systems and appliances shown have not been tested and no guarantee as to the operability or efficiency can be given.

PROPERTY PHOTO PLANS .CO.UK
ONE STOP SHOP FOR PROPERTY MARKETING

The displayed square footage is taken from the floor plans with measurements created using the Royal Institute of Chartered Surveyors' Code of Practice for Measuring. These measurements are approximate and included for illustrative purposes only. Winkworth does not make any representation as to the accuracy of these measurements and you should seek to verify them for yourself. Winkworth accept no liability for any loss you may suffer if you rely on these measurements.

Shepherds Bush | 020 8735 3266 | shepherdsbush@winkworth.co.uk

Winkworth

for every step...

Under the Property Misdescriptions Act 1991, these Particulars are a guide and act as information only. All details are given in good faith and are believed to be correct at time of printing. Winkworth give no representation as to their accuracy and potential purchasers or tenants must satisfy themselves by inspection or otherwise as to their correctness. No employee of Winkworth has authority to make or give any representation or warranty in relation to this property.