



FLAT 8, AVENELL MANSIONS, AVENELL ROAD, LONDON, N5
£525,000 LEASEHOLD

A SPACIOUS, TWO DOUBLE BEDROOM,
PURPOSE BUILT APARTMENT MOMENTS
FROM ARSENAL TUBE.

Highbury | 0207 989 7000 | highbury@winkworth.co.uk

Winkworth

winkworth.co.uk

See things differently



DESCRIPTION:

A bright, two double bedroom apartment set on the upper floors of this purpose-built Mansion block in Highbury, N5. Standing in excess of 725 sqft, the property offers a wealth of natural light streaming into the southwest facing living room and kitchen overlooking onto treelined Avenell Road. Both bedrooms are genuine doubles, the master bedroom benefitting from built in storage and second bedroom overlooking neighbouring gardens. The property is completed with a spacious family bathroom and an additional useful storage unit on the ground floor.

Avenell Road is a tree-lined street in the Blackstock triangle which is renowned for its neighbourly feel. Furthermore, the property falls within proximity of several local schools rated "Outstanding" by Ofsted including the very popular Gillespie and Ambler Schools.

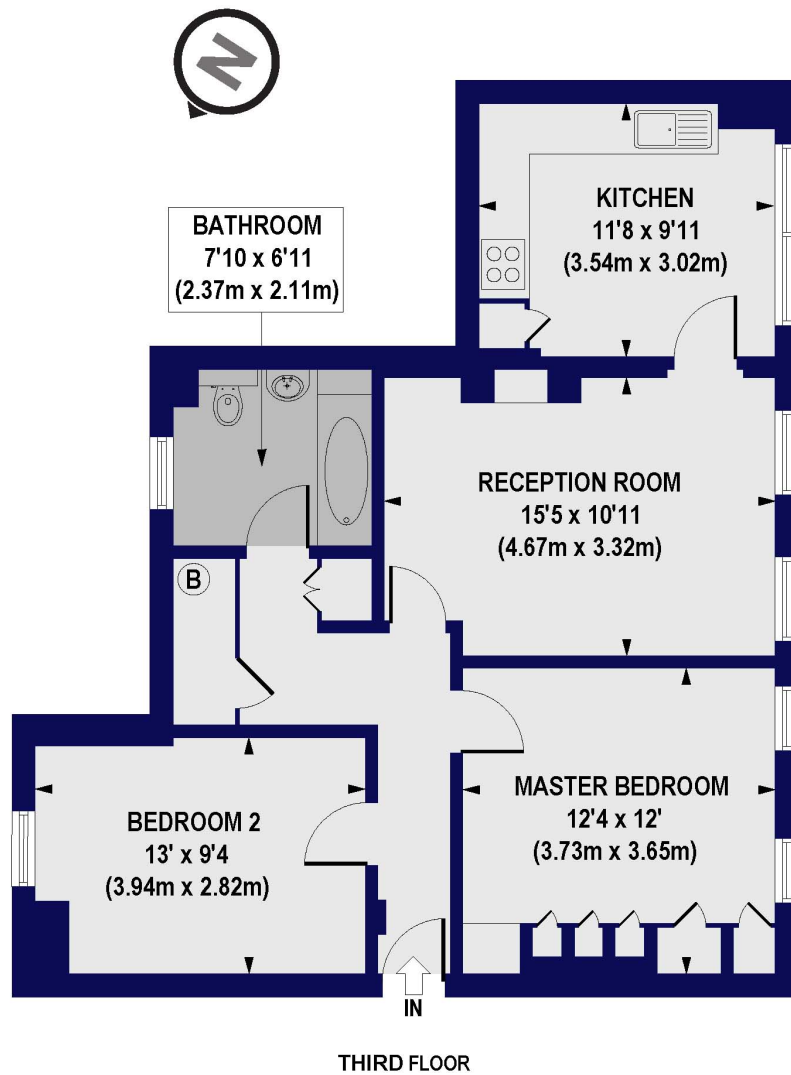
The property is perfectly situated for an array of local amenities including independent shops, restaurants and coffee shops as well as being in easy reach of three local parks and Gillespie nature reserve. Upper Street is only a short distance away and transport links are some of the best around with Arsenal station providing the Piccadilly line and Finsbury Park offering overground services (including the Thameslink network serving the City and Gatwick Airport) and underground services on the Victoria line.

Winkworth



Winkworth

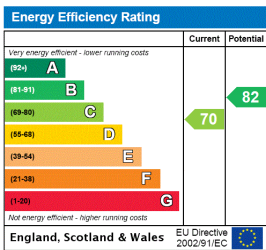
Avenell Mansions Avenell Road, N5
Approx. Gross Internal Floor Area 730 sq. ft / 67.79 sq. m



All measurements of walls, doors, windows, fittings and appliances, including their size and location, are shown as standard sizes and do not constitute any warranty or representation by the seller, their agent or CP Creative. Any intending purchaser must satisfy himself by inspection or otherwise as to the correctness of the information contained in these plans. This plan is for illustrative purposes only and should be used as such by any prospective purchasers.

Winkworth

This floorplan is for illustration purposes only and is not to scale. The position and size of doors, windows, appliances and other features are approximate.



Highbury | 0207 989 7000 | highbury@winkworth.co.uk

Winkworth

winkworth.co.uk

See things differently

Winkworth wishes to inform prospective buyers and tenants that these particulars are a guide and act as information only. All our details are given in good faith and believed to be correct at the time of printing but they don't form part of an offer or contract. No Winkworth employee has authority to make or give any representation or warranty in relation to this property. All fixtures and fittings, whether fitted or not are deemed removable by the vendor unless stated otherwise and room sizes are measured between internal wall surfaces, including furnishings.