



CREDENHILL STREET, SW16  
£410,000 LEASEHOLD

## A BRIGHT AND SPACIOUS ONE DOUBLE BEDROOM FLAT

Tooting | 020 8767 5221 | [tooting@winkworth.co.uk](mailto:tooting@winkworth.co.uk)

**Winkworth**

for every step...

[winkworth.co.uk](http://winkworth.co.uk)



## DESCRIPTION:

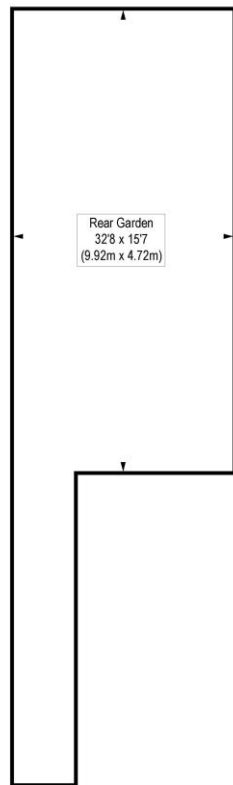
This immaculately presented, bright, and spacious one-bedroom flat boasts a large, luminous reception room, a double bedroom, and a modern kitchen with wooden worktops. The fully tiled bathroom includes a separate shower cubicle, and residents can enjoy access to a shared garden.

Located on Credenhill Street in the highly acclaimed Furzedown area, within a good school catchment area. The property is within easy reach of a wide range of local amenities on Moyser Road and Tooting High Road. Excellent transport links are available nearby at Tooting Bec Underground (Northern Line), Streatham Common (offering connections to London Bridge, Victoria, and Clapham Junction), and Streatham Overground Station (providing Thameslink services).

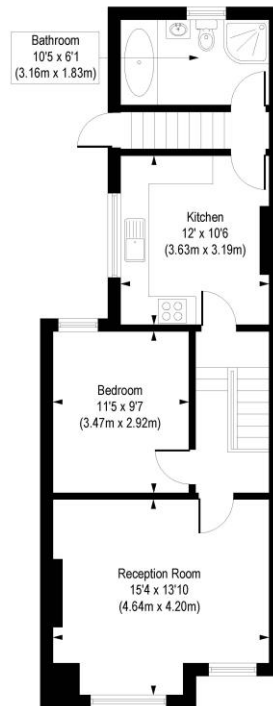


# Credenhill Street, SW16

Approx. Gross Internal Floor Area 640 sq. ft / 59.49 sq. m



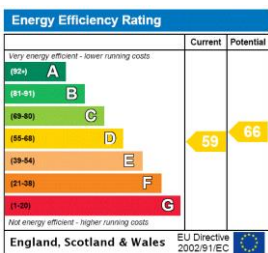
Ground Floor  
Gross Internal  
Floor Area 32 sq ft



First Floor  
Gross Internal  
Floor Area 608 sq ft

COMPLIANT WITH RICS CODE OF MEASURING PRACTICE. Floorplan is for illustrative purposes only and is not to scale. Every attempt has been made to ensure the accuracy of the floorplan shown, however all measurements, fixtures, fittings and data shown are an approximate interpretation for illustrative purposes only. Liability for errors, omissions or mis-statement through negligence or otherwise is hereby excluded.

This floorplan is for illustration purposes only and is not to scale. The position and size of doors, windows, appliances and other features are approximate.



Tooting | 020 8767 5221 | tooting@winkworth.co.uk



for every step...

winkworth.co.uk

Winkworth wishes to inform prospective buyers and tenants that these particulars are a guide and act as information only. All our details are given in good faith and believed to be correct at the time of printing but they don't form part of an offer or contract. No Winkworth employee has authority to make or give any representation or warranty in relation to this property. All fixtures and fittings, whether fitted or not are deemed removable by the vendor unless stated otherwise and room sizes are measured between internal wall surfaces, including furnishings.