



CROWBOROUGH ROAD, SW17
£850,000 FREEHOLD

SUPERB SEMI-DETACHED FAMILY HOME ON A QUIET TREE LINED RESIDENTIAL ROAD

Tooting | 020 8767 5221 | tooting@winkworth.co.uk

Winkworth

for every step...

winkworth.co.uk



A fantastic opportunity to acquire an unmodernised family home located on one of Furzedowns prime roads. The property offers the scope to create a substantial family home subject to usual planning constraints. Accommodation comprises, a large reception room to the front boasting an original fireplace, a separate dining room is adjacent and the kitchen is to the rear. The first floor has two superb double bedrooms, one large single bedroom and a family bathroom with separate WC.

Externally the rear garden is a wonderful size stretching in excess of 50ft and offering plentiful space to enjoy. There is ample space for a home office to be erected to the rear.

Tenure: Freehold

Council: Wandsworth council tax band E

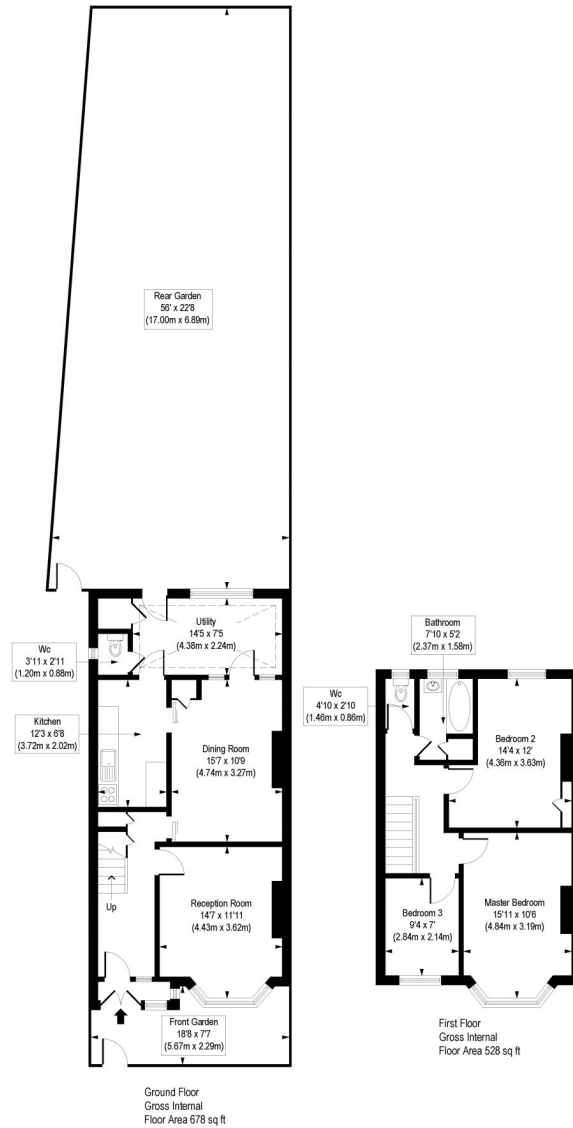
Located on Crowborough Road in the well regarded residential area of Furzedown, the property is within easy reach of Tooting Broadway, which offers a good selection of shops and amenities as well as being close to local schools.





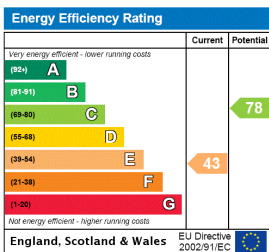
Crowborough Road, SW17

Approx. Gross Internal Floor Area 1206 sq. ft / 112.04 sq. m



COMPLIANT WITH RICS CODE OF MEASURING PRACTICE. Floorplan is for illustrative purposes only and is not to scale. Every attempt has been made to ensure the accuracy of the floorplan shown, however all measurements, fixtures, fittings and data shown are an approximate interpretation for illustrative purposes only. Liability for errors, omissions or mis-statement through negligence or otherwise is hereby excluded.

This floorplan is for illustration purposes only and is not to scale. The position and size of doors, windows, appliances and other features are approximate.



Tooting | 020 8767 5221 | tooting@winkworth.co.uk

for every step...

winkworth.co.uk

Winkworth wishes to inform prospective buyers and tenants that these particulars are a guide and act as information only. All our details are given in good faith and believed to be correct at the time of printing but they don't form part of an offer or contract. No Winkworth employee has authority to make or give any representation or warranty in relation to this property. All fixtures and fittings, whether fitted or not are deemed removable by the vendor unless stated otherwise and room sizes are measured between internal wall surfaces, including furnishings.