



CREIGHTON ROAD, N17
£310,000 LEASEHOLD

DESCRIPTION:

This generously proportioned two double bedroom 3rd floor apartment forms part of a well-maintained private development moments from White Hart Lane BR Station and Tottenham High Road.

Sole Agent

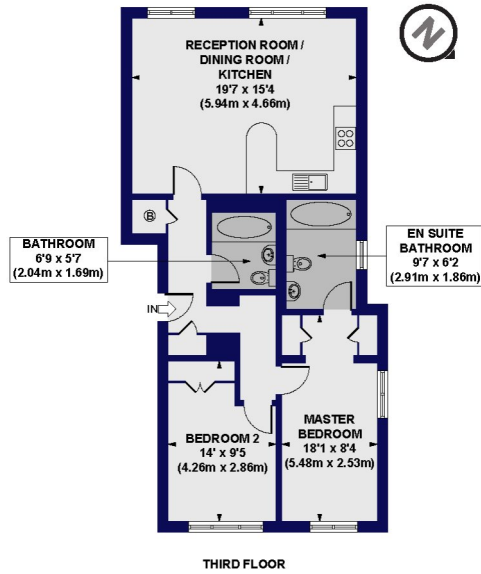
Harringay | 020 8800 5151 | harringay@winkworth.co.uk



for every step...

winkworth.co.uk

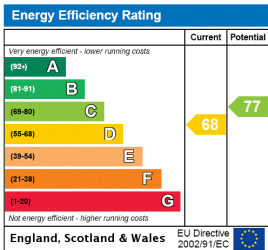
Somerset Hall, Creighton Road, N17
 Approx. Gross Internal Floor Area 808 sq. ft / 75.06 sq. m



All measurements of walls, doors, windows, fittings and appliances, including their size and location, are shown as standard sizes and do not constitute a warranty or representation in the sales particulars. All measurements are taken from the internal wall surfaces, unless otherwise stated. Measurements are taken from the internal wall surfaces, unless otherwise stated. Measurements are taken from the internal wall surfaces, unless otherwise stated. Measurements are taken from the internal wall surfaces, unless otherwise stated.



This floorplan is for illustration purposes only and is not to scale. The position and size of doors, windows, appliances and other features are approximate.



Tenure: Leasehold
Term: 105 year and 5 months
Service Charge: £0 per annum
Ground Rent: £ 0 Annually (subject to increase)
Council Tax Band:
 Where no figures are shown, we have been unable to ascertain the information. All figures that are shown were correct at the time of printing.

Harringay | 020 8800 5151 | harringay@winkworth.co.uk



for every step...

winkworth.co.uk

Winkworth wishes to inform prospective buyers and tenants that these particulars are a guide and act as information only. All our details are given in good faith and believed to be correct at the time of printing but they don't form part of an offer or contract. No Winkworth employee has authority to make or give any representation or warranty in relation to this property. All fixtures and fittings, whether fitted or not are deemed removable by the vendor unless stated otherwise and room sizes are measured between internal wall surfaces, including furnishings.