





A bright and spacious two double bedroom apartment situated on the first floor of this popular private block in Putney. The property has been newly refurbished throughout and includes a generous reception room with separate fitted kitchen. The two double bedrooms are serviced by a modern bathroom. Further benefits include a private garage to the rear of the block and large, well-maintained communal gardens. Sold with a Share of the Freehold and no onward chain.

White Court is located on West Hill, just 0.6 miles from East Putney Tube Station and 0.7 miles from Putney mainline which both offer excellent transport links into the City. There are also convenient bus routes to Clapham Junction, Victoria and the City plus many bus routes into Putney, the West End, Kingston and Wimbledon. The A3 also offers easy access by road out of London. The large green open spaces of Putney Heath and Wimbledon Common are close by.

Under the Property Misdescriptions Act these particulars are intended as a guide and act as information only. They give a fair overall description for the guidance of potential purchasers or tenants but do not constitute an offer or part of a contract. All details and approximate measurements are given in good faith and are believed to be correct at the time of printing, but any potential purchasers or tenants should not rely on the mis-statements or representations of fact but must satisfy themselves by inspection or otherwise as to their correctness. No employee of Winkworth has authority to make or give any representation or warranty to this property.



Energy Efficiency Rating		Current	Potential
Very energy efficient - lower running costs			
(92-)	A		
(81-91)	B		
(69-80)	C		
(56-68)	D		
(39-54)	E		
(21-38)	F		
(1-20)	G		
Not energy efficient - higher running costs			
England, Scotland & Wales		EU Directive 2002/91/EC	

Features

- Two Double Bedrooms
- Private Garage
- Communal Gardens
- Lift Access
- S/C £1,800 PA
- No onward chain

Share of Freehold

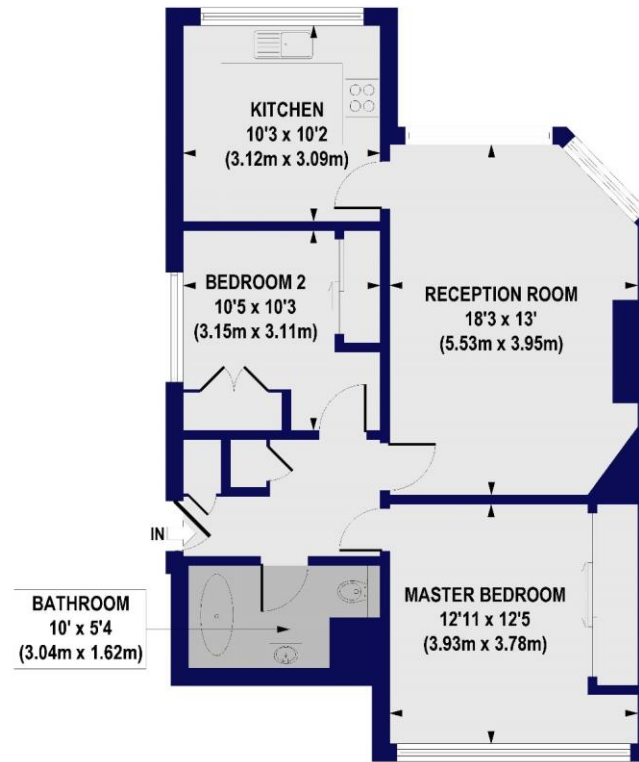
Internal Area

Total 744 sq. ft/ 69.14 sq. m

Price

£450,000

White Court West Hill, SW15 Approx. Gross Internal Floor Area 744 sq. ft / 69.14 sq. m



FIRST FLOOR

All measurements of walls, doors, windows, fittings and appliances, including their size and location, are shown as standard sizes and do not constitute any warranty or representation by the seller, their agent or CP Creative. Any intending purchaser must satisfy himself by inspection or otherwise as to the correctness of the information contained in these plans. This plan is for illustrative purposes only and should be used as such by any prospective purchasers.