



CAMBRIDGE AVENUE, LONDON, NW6
£450,000 LEASEHOLD

A WONDERFUL 648SQFT TWO DOUBLE BEDROOM, SECOND FLOOR FLAT, LOCATED A STONES THROW FROM AMENITIES AND UNDERGROUND TUBE STATION.

Kensal Rise & Queens Park | 0208 960 4947 | kensalrise@winkworth.co.uk





LOCATION:

Cambridge Avenue is located in the heart of Kilburn, with the flat itself being a stone's throw from Kilburn Park Underground Station. There are an array of amenities on your doorstep, with Paddington recreational ground being nearby too.

Access in and out of the city by car or public transport are easy, with a range of options available to you.



Winkworth



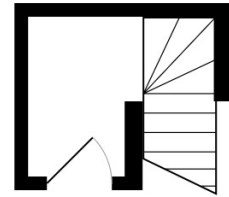
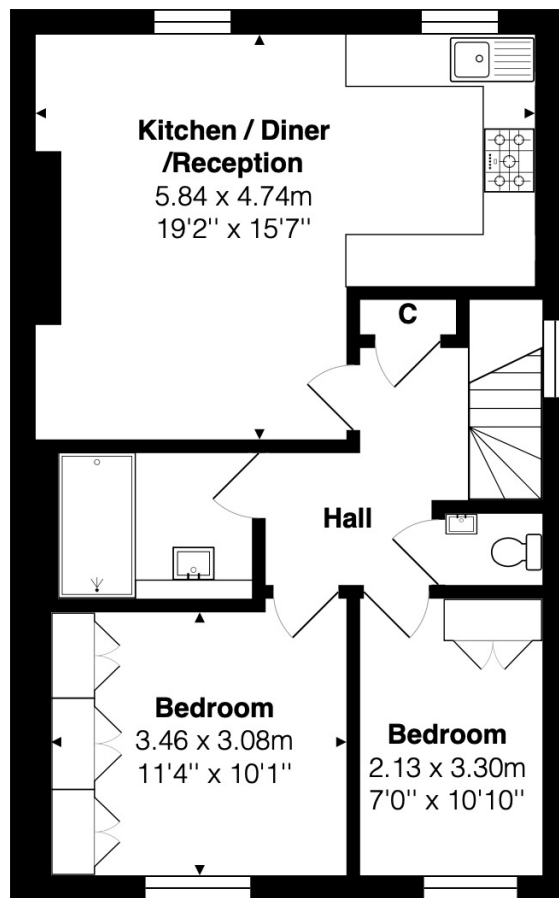
DESCRIPTION:

A great opportunity to acquire this well presented two double bedroom, second floor flat spread across 648 sqft, and offered with no upper chain. Located within a period building, this property is on the top floor, therefore benefits from lots of natural light.

Overall, the flat is presented in good condition, but can benefit from a new owner adding their own touch to it.

Viewing comes highly recommended.

Winkworth



1st Floor

Second Floor

Total Area: 60.2 m² ... 648 ft²

All measurements are approximate and for display purposes only

This floorplan is for illustration purposes only and is not to scale. The position and size of doors, windows, appliances and other features are approximate.

Kensal Rise & Queens Park | 0208 960 4947 | kensalrise@winkworth.co.uk

Winkworth

winkworth.co.uk

See things differently

winkworth wishes to inform prospective buyers and tenants that these particulars are a guide and act as information only. All our details are given in good faith and believed to be correct at the time of printing but they don't form part of an offer or contract. No Winkworth employee has authority to make or give any representation or warranty in relation to this property. All fixtures and fittings, whether fitted or not are deemed removable by the vendor unless stated otherwise and room sizes are measured between internal wall surfaces, including furnishings.