



SYCAMORE WALK, W10  
**£2,000 PER MONTH PART FURNISHED**

**A NEWLY DECORATED, SPLIT LEVEL APARTMENT  
LOCATED JUST OFF OF FIFTH AVENUE W10.**

Kensal Rise & Queens Park | 0208 960 4947 | [kensalrise@winkworth.co.uk](mailto:kensalrise@winkworth.co.uk)

**Winkworth**

for every step...

[winkworth.co.uk](http://winkworth.co.uk)



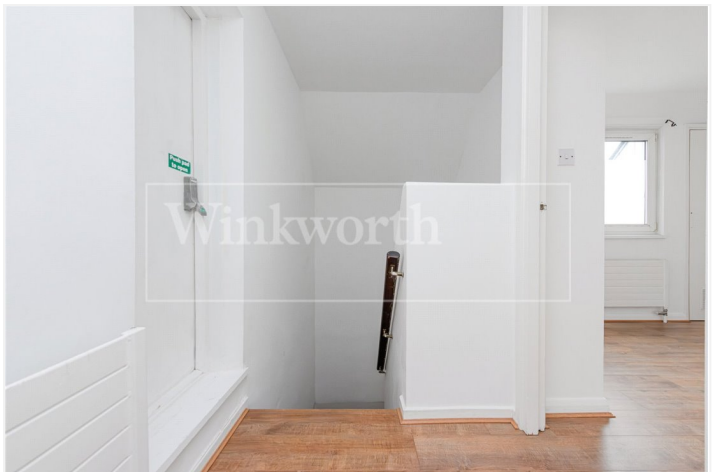
## **DESCRIPTION:**

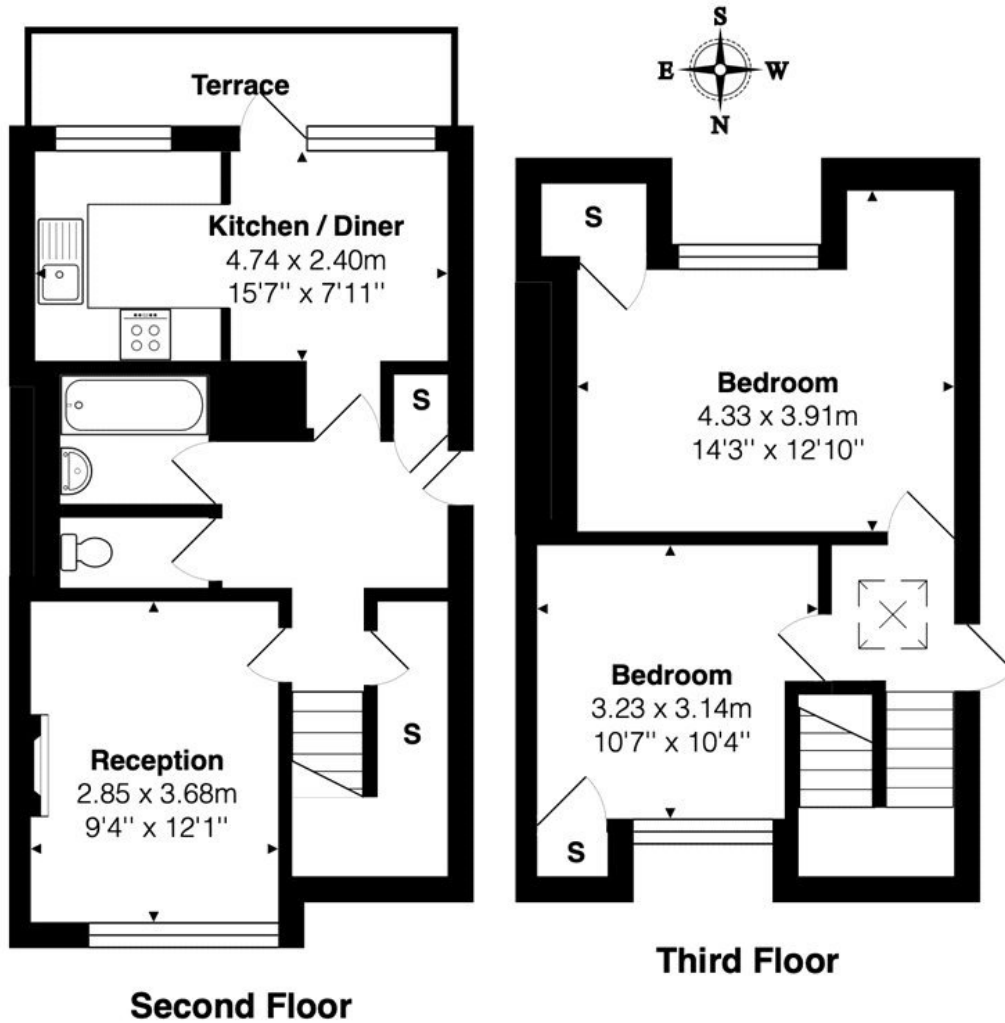
This large duplex apartment has two good sized double bedrooms with built in storage located on the top floor and a fantastic living room with kitchen diner leading to the south facing balcony downstairs.

The property is in excellent condition throughout and benefits from under stair storage, new hard wood flooring, a private balcony, secure fob entry system and a separate W.C

Offered Part furnished with a bed frame, table and chairs and electric feature fireplace

Westminster Council Tax Band D





Total Area: 73.1 m<sup>2</sup> ... 787 ft<sup>2</sup> (excluding terrace)

All measurements are approximate and for display purposes only

This floorplan is for illustration purposes only and is not to scale. The position and size of doors, windows, appliances and other features are approximate.

**Deposit:** 5 weeks rent

**Holding Deposit:** 1 weeks rent

**Council Tax Band:**

Where no figures are shown, we have been unable to ascertain the information. All figures that are shown were correct at the time of printing.

Kensal Rise & Queens Park | 0208 960 4947 | kensalrise@winkworth.co.uk

**Winkworth**

for every step...

winkworth.co.uk

Winkworth wishes to inform prospective buyers and tenants that these particulars are a guide and act as information only. All our details are given in good faith and believed to be correct at the time of printing but they don't form part of an offer or contract. No Winkworth employee has authority to make or give any representation or warranty in relation to this property. All fixtures and fittings, whether fitted or not are deemed removable by the vendor unless stated otherwise and room sizes are measured between internal wall surfaces, including furnishings.