



High Mead
Ferndown BH22 9DU
Guide Price £475,000

Winkworth



**GUIDE PRICE £475,000
FREEHOLD**

A fantastic opportunity to purchase this spacious four bedroom, two bathroom detached chalet style home.

The property benefits from unique uninterrupted views over equestrian fields, off road parking for several vehicles as well as a detached garage and NO ONWARD CHAIN.

Detached Chalet Style Home

No Onward Chain

Utility Area

Car Charging Point

Two Bathrooms

Four Bedrooms

Working Fireplace

Stunning Garden

Views Directly Over Equestrian Fields

Driveway For Several Vehicles

Detached Garage

EPC TBC | Council Tax Band C

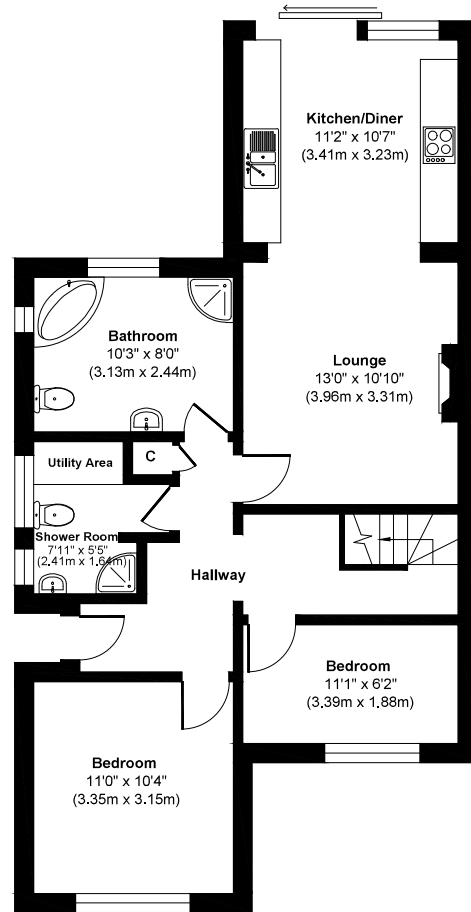
01202 434365

ferndown@winkworth.co.uk

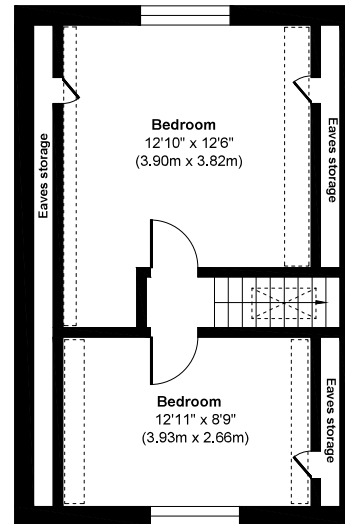




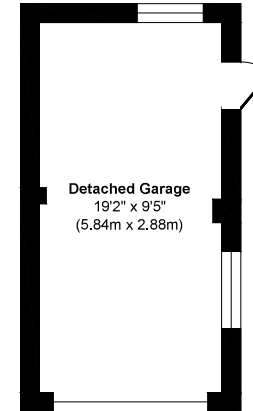
High Mead



Ground Floor
Approximate Floor Area
739 sq. ft
(68.68 sq. m)



First Floor
Approximate Floor Area
325 sq. ft
(30.20 sq. m)



Garage (not in exact position)
Approximate Floor Area
181 sq. ft
(16.82 sq. m)

Approx. Gross Internal Floor Area 1245 sq. ft / 115.70 sq. m (including garage)

Illustration for identification purposes only, measurements approximate and not to scale.



LOCATION

Positioned in a sought after location close to excellent schools and Ferndown town centre, which has a range of shops, cafes and amenities including an M&S Foodhall. You can explore the outdoors at nearby Longham Lakes or enjoy award winning beaches which are just twenty minutes away. Convenient bus routes give you easy access to Bournemouth, Poole & Wimborne all of which have an excellent range of facilities. The A31 provides quick access to the New Forest, Southampton, London and beyond for the commuter by car.

Winkworth Ferndown

406 Ringwood Road, Ferndown, Dorset, BH22 9AU

01202 434365 | ferndown@winkworth.co.uk

winkworth.co.uk/ferndown

Winkworth