



## THE MARLOWES, LONDON, NW8 £3,399,999 FREEHOLD

A beautifully presented 5 bedroom town house (2628 sq ft/244 sq m) arranged over 4 floors. This family house offers superb light and contemporary design, boasts a large reception room on the ground floor leading to the patio garden. Further benefits include 2 further reception rooms, fitted kitchen and off street parking for 2 cars.

The Marlowes is located behind St John's Wood Park and within 0.4 miles of St John's Wood underground stations and local shops. The American School (0,3 miles) and Regents Park (0.7 miles) are also close at hand.

Five Bedrooms | Three Reception Rooms | Kitchen | Four Bathrooms | Patio Garden | Off Street Parking to Two Cars | Freehold

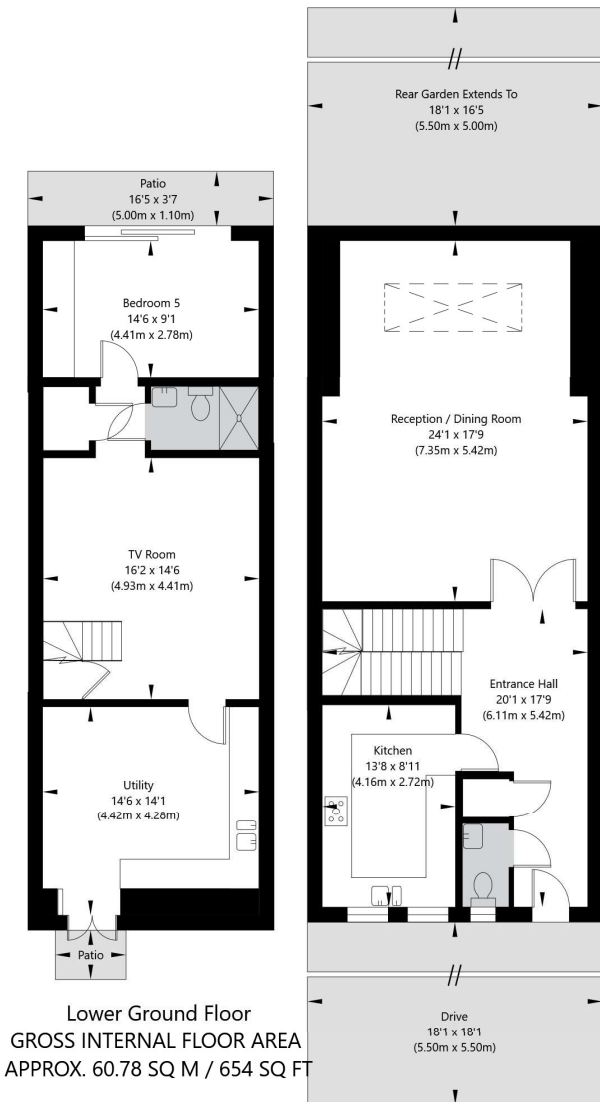
**Winkworth**

for every step...

[winkworth.co.uk/st-johns-wood](http://winkworth.co.uk/st-johns-wood)

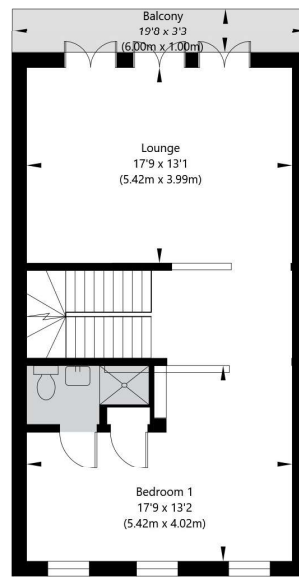


# The Marlowes, London NW8 6NA

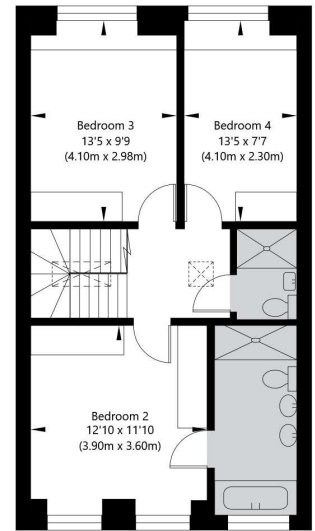


Lower Ground Floor  
GROSS INTERNAL FLOOR AREA  
APPROX. 60.78 SQ M / 654 SQ FT

Ground Floor  
GROSS INTERNAL FLOOR AREA  
APPROX. 73.77 SQ M / 794 SQ FT



First Floor  
GROSS INTERNAL FLOOR AREA  
APPROX. 54.74 SQ M / 589 SQ FT

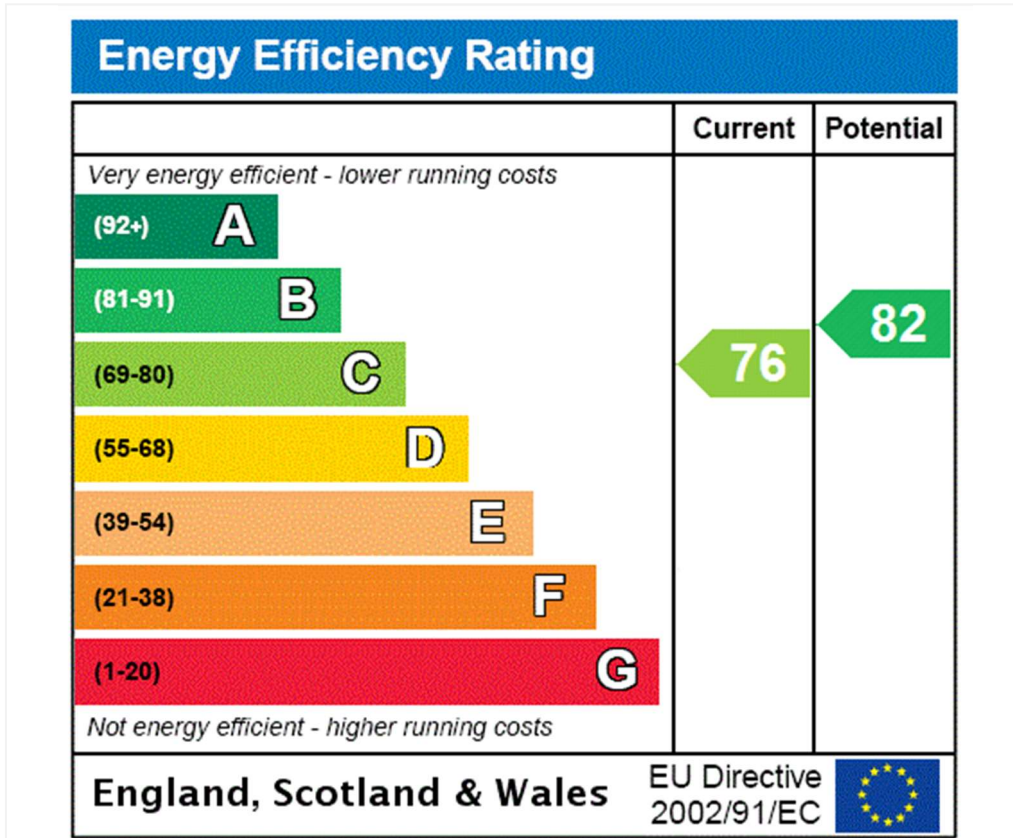


Second Floor  
GROSS INTERNAL FLOOR AREA  
APPROX. 54.95 SQ M / 591 SQ FT

APPROXIMATE GROSS INTERNAL FLOOR AREA 244.24 SQ M / 2628 SQ FT

THIS FLOOR PLAN IS FOR ILLUSTRATIVE PURPOSES ONLY AND SHOULD BE USED FOR THIS PURPOSE BY PROSPECTIVE APPLICANTS AS ITS NOT TO SCALE.

(c) AMBERSHORE PIX LIMITED / PHOTO - VIDEO - FLOOR PLANS / 0800 999 1577 / WWW.AMBERSHOREPIX.CO.UK



**Tenure:** Freehold

**Council Tax Band:** H

Where no figures are shown, we have been unable to ascertain the information. All figures that are shown were correct at the time of printing.

Where no figures are shown, we have been unable to ascertain the information. All figures that are shown were correct at the time of printing. These particulars are not an offer or contract, nor part of one. You should not rely on statements by Winkworth in the particulars or by word of mouth or in writing "information" as being factually accurate about the property, its condition or its value. Winkworth does not have any authority to make any representations about the property, and accordingly any information given is entirely without responsibility on the part of the agents, seller(s) or lessor(s). These particulars are prepared on the basis of the information supplied by our client and are a rough guide for information only. The photographs show only certain parts of the property. We are not able to check all of the information and therefore are unable to guarantee accuracy. All interested parties are therefore advised to undertake all necessary inspections and checks that they deem appropriate. Where displayed, the square footage is taken from the floor plans, which are created by an independent supplier. These measurements are approximate and included for illustrative purposes only. The measurements may vary. Winkworth does not make any representation as to the accuracy of these measurements and you should seek to verify them for yourself. Winkworth accept no liability for any loss you may suffer if you rely on these measurements. All fixtures and fittings, whether fitted or not are deemed removable by the vendor unless stated. Any reference to alterations to, or use of, any part of the property does not mean that any necessary planning, building regulations or other consent has been obtained. Amenities and appliances have not been tested

St John's Wood | 103-104 St. Johns Wood Terrace, London, NW8 6PL | 020 7586 7001 |



for every step...

[winkworth.co.uk/st-johns-wood](http://winkworth.co.uk/st-johns-wood)

Winkworth wishes to inform prospective buyers and tenants that these particulars are a guide and act as information only. All our details are given in good faith and believed to be correct at the time of printing but they don't form part of an offer or contract. No Winkworth employee has authority to make or give any representation or warranty in relation to this property. All fixtures and fittings, whether fitted or not are deemed removable by the vendor unless stated otherwise and room sizes are measured between internal wall surfaces, including furnishings.