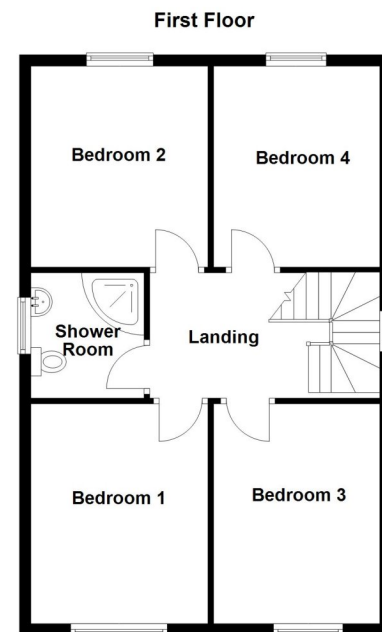
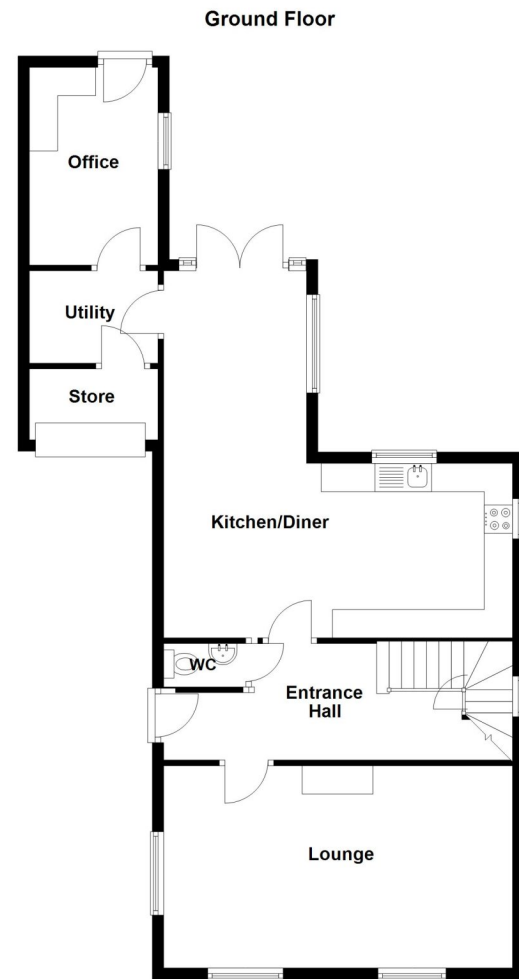


EPC TO FOLLOW



19 Cliffe Close, Ruskington, Sleaford, Lincolnshire, NG34 9AT

£295,000 Freehold

Winkworth are delighted to present for sale this Four Bedroom Detached Home on an extremely generous plot in the ever popular village of Ruskington.

The property benefits from spacious accommodation comprising of an Entrance hall, Lounge Kitchen/Diner, Garden Room, Downstairs Cloakroom, and to the first floor a spacious landing area with Four Double Bedrooms and a Family Bathroom.

To the front of the property there block paved driveway providing plenty of off road parking. To the rear there is a private enclosed garden with views over the stunning countryside.

A viewing is highly recommended.

FOUR DOUBLE BEDROOMS | NEW OAK INTERNAL DOORS | OPEN PLAN KITCHEN/DINER | LOUNGE WITH LOG BURNER | NON OVERLOOKED REAR GARDEN | VIEWS OVER OPEN COUNTRYSIDE | AMPLE PARKING | CONVERTED GARAGE FOR HOME OFFICE/UTILITY | POPULAR VILLAGE LOCATION | WELL PRESENTED THROUGHOUT



ACCOMMODATION

Lounge - 20'3" x 11'9" (6.17m x 3.58m)

Kitchen - 20'3" x 10'1" (6.17m x 3.07m)

Dining Room - 11'5" x 7'7" (3.48m x 2.3m)

Store - 7'5" x 4' (2.26m x 1.22m)

Utility Room - 7'5" x 5' (2.26m x 1.52m)

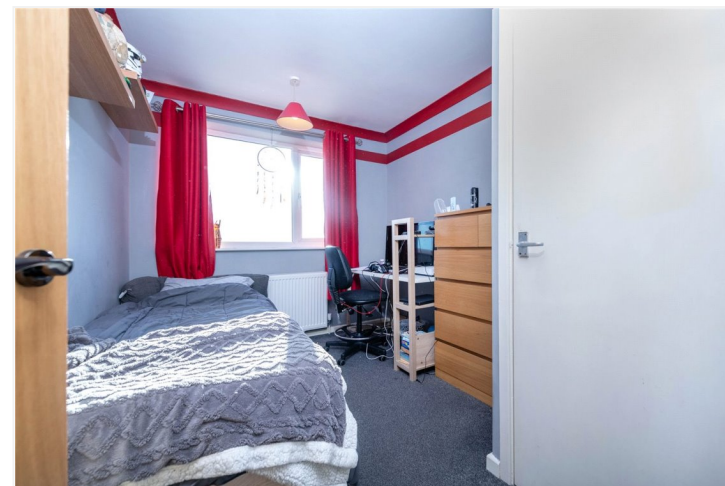
Office - 11'6" x 7'5" (3.5m x 2.26m)

Bedroom 1 - 12'8" x 10'3" (3.86m x 3.12m)

Bedroom 2 - 11'8" x 10'3" (3.56m x 3.12m)

Bedroom 3 - 12'8" x 9'8" (3.86m x 2.95m)

Bedroom 4 - 11'8" x 8' (3.56m x 2.44m)



LOCAL AUTHORITY

North Kesteven District Council

TENURE

Freehold

COUNCIL TAX BAND

C

