



## Churchill Gardens, UK, SW1V

£2,250 PER MONTH

FURNISHED

### AT A GLANCE

- Heating and Hot Water Included
- Reception Room
- Two Double Bedrooms
- Bathroom
- Balcony

**Winkworth**

for every step...



Energy Efficiency Rating		
	Current	Potential
Very energy efficient - lower running costs		
(92+) <b>A</b>		
(81-91) <b>B</b>		
(69-80) <b>C</b>	69	75
(55-68) <b>D</b>		
(39-54) <b>E</b>		
(21-38) <b>F</b>		
(1-20) <b>G</b>		
Not energy efficient - higher running costs		
England, Scotland & Wales	EU Directive 2002/91/EC	

## CHURCHILL GARDENS, UK, SW1V

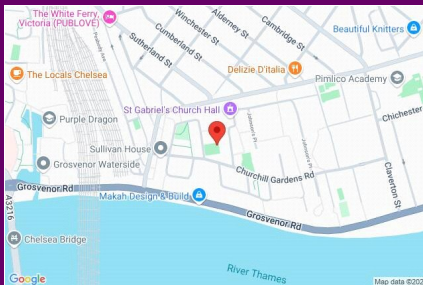
£2,250 PER MONTH

FURNISHED

Accommodation comprises a reception room with space for dining, two good double bedrooms, bathroom, separate kitchen and balcony. The property is accessed via lift or stairs to the fifth floor and offered on a furnished basis. INCLUDES HOT WATER AND HEATING.

Situated within moments of the superb selection of local shops, cafes and restaurants on Lupus Street, the 'Moreton Triangle' and Wilton Road. The extensive collection of retail outlets and theatres at nearby Victoria are also within walking distance as are the green open spaces of St George's Square and Battersea Park.

Transport links can be found via Pimlico Underground (Victoria Line, 0.5 Miles) and Victoria Station which offers a plethora of different transport methods (0.8 miles).

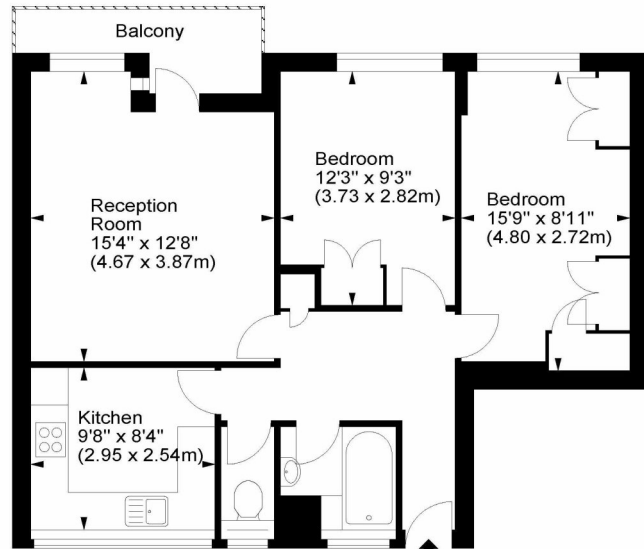


winkworth wishes to inform prospective buyers and tenants that these particulars are a guide and act as information only. All our details are given in good faith and believed to be correct at the time of printing but they don't form part of an offer or contract. No winkworth employee has authority to make or give any representation or warranty in relation to this property. All fixtures and fittings, whether fitted or not are deemed removable by the vendor unless stated otherwise and room sizes are measured between internal wall surfaces, including fire-chimneys.

### Churchill Gardens, SW1



Approx. Gross Internal Area  
663 Sq Ft - 61.59 Sq M



Fifth Floor

For illustration purposes only. Not to scale.  
All measurements are taken and shown at floor level.  
www.r3photography.co.uk © Photography / Floor Plans / Lease Plans / EPCs



Pimlico & Westminster | 020 7828 1786 |  
pimlico@winkworth.co.uk

winkworth.co.uk/pimlico

# Winkworth

for every step...