



**VERTO, READING, BERKSHIRE, RG1 3FR**  
**£1,400 PER MONTH FURNISHED**

**MODERN ONE BEDROOM SIXTH FLOOR  
RIVERSIDE APARTMENT. AVAILABLE 27TH  
NOVEMBER.**

Reading | 0118 4022 300 | [reading@winkworth.co.uk](mailto:reading@winkworth.co.uk)

**Winkworth**

for every step...

[winkworth.co.uk](http://winkworth.co.uk)





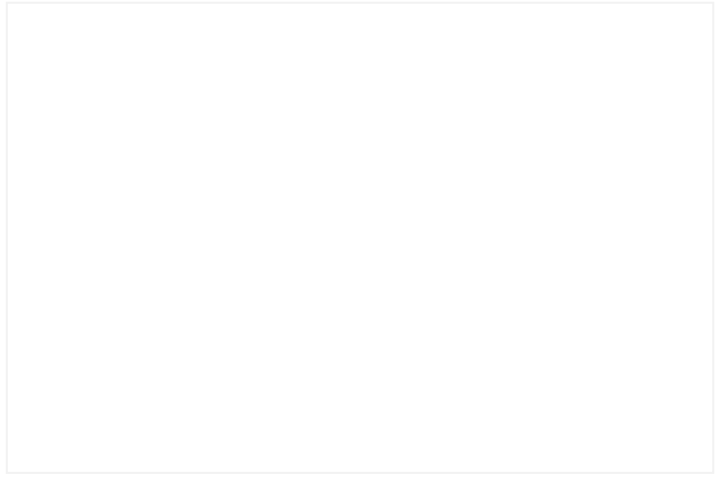
## DESCRIPTION:

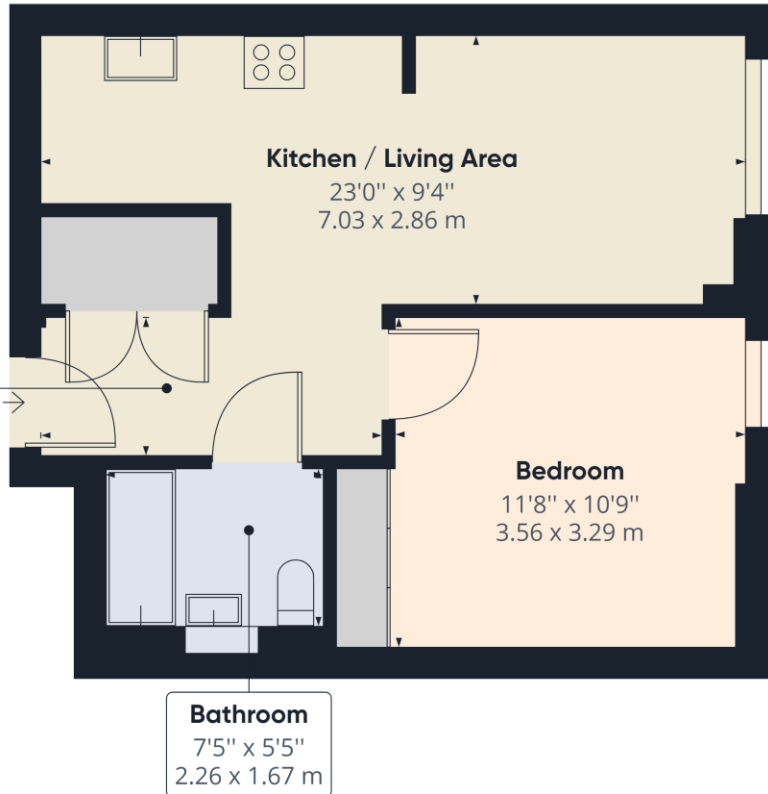
Modern one bedroom sixth floor town centre apartment finished to a high specification. Living accommodation comprises open plan living space with modern fitted kitchen, a double bedroom with fitted wardrobes and a three piece bathroom. The development further benefits from lift access, communal roof terrace and gym. Available 27th November 2024. Furnished.

## AT A GLANCE

- One Bedroom Apartment
- Sixth floor
- Council tax band C
- Communal Gym, library and access to roof garden
- No Parking
- Available 27th November
- Furnished







Approximate total area<sup>(1)</sup>  
 446.32 ft<sup>2</sup>  
 41.46 m<sup>2</sup>

(1) Excluding balconies and terraces

While every attempt has been made to ensure accuracy, all measurements are approximate, not to scale. This floor plan is for illustrative purposes only.

GIRAFFE360

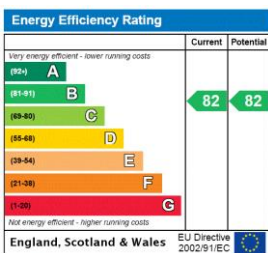
This floorplan is for illustration purposes only and is not to scale. The position and size of doors, windows, appliances and other features are approximate.

**Deposit:** £1,615.38

**Holding Deposit:** £323.07

**Council Tax Band:** C

Where no figures are shown, we have been unable to ascertain the information. All figures that are shown were correct at the time of printing.



Reading | 0118 4022 300 | reading@winkworth.co.uk



for every step...

winkworth.co.uk

Winkworth wishes to inform prospective buyers and tenants that these particulars are a guide and act as information only. All our details are given in good faith and believed to be correct at the time of printing but they don't form part of an offer or contract. No Winkworth employee has authority to make or give any representation or warranty in relation to this property. All fixtures and fittings, whether fitted or not are deemed removable by the vendor unless stated otherwise and room sizes are measured between internal wall surfaces, including furnishings.