



## Willow Mews, Shepherd's Bush, W12

£725,000 Freehold

A fabulous single storey freehold house with parking and electric car charger, within a private gated mews.

Reception Room | Kitchen | 2 Bedrooms | Bathroom | Garden | 818 Sq Ft / 76 Sq M | One Parking Space | Council Tax Band E | EPC Rating Band C

**Winkworth**

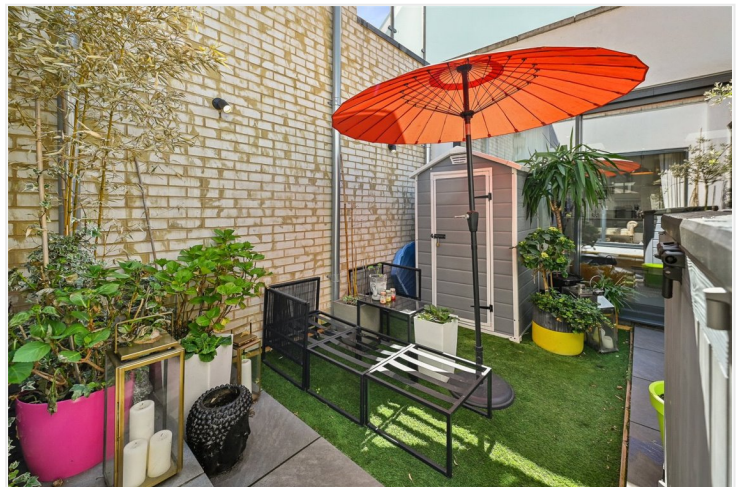


## LOCATION

Willow Mews is a private gated development running off Willow Vale, forming part of the ever popular 'Groves' area of Shepherd's Bush. Within easy reach of the area's diverse array of shops and restaurants, there are also several pubs and coffee shops close by. The outside spaces of both Wormholt and Ravenscourt Parks are just a short distance away, whilst superb transport links give easy access both in to and out of Central London. A number of well regarded schools are also close by.

## DESCRIPTION

Offered in superb condition throughout, the property was built in 2019 and benefits from accommodation which comprises entrance hall, two double bedrooms, bathroom, open plan kitchen/reception room and courtyard garden. The property further offers off street parking, with an electric car charger.





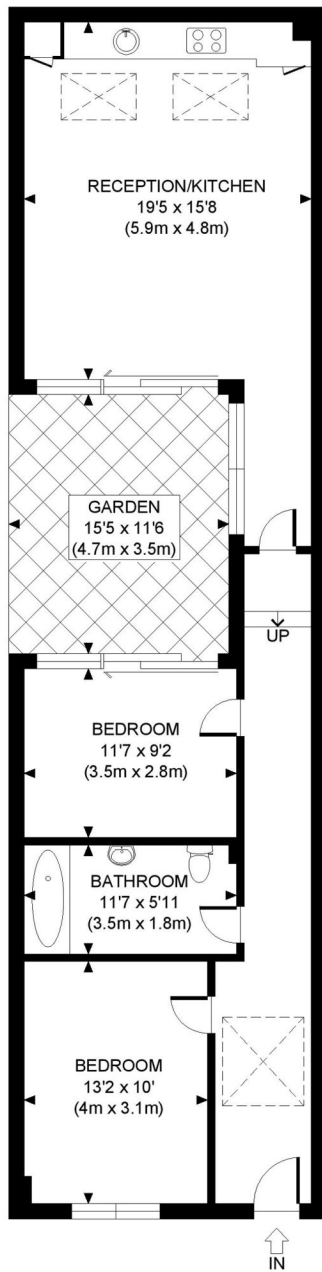
**LOCAL AUTHORITY**  
Hammersmith & Fulham

**TENURE**  
Freehold.

**PRICE: £725,000 Freehold**



Energy Efficiency Rating		
	Current	Potential
Very energy efficient - lower running costs		
(92+) <b>A</b>		
(81-91) <b>B</b>		
(69-80) <b>C</b>	80	80
(55-68) <b>D</b>		
(39-54) <b>E</b>		
(21-38) <b>F</b>		
(1-20) <b>G</b>		
Not energy efficient - higher running costs		
<b>England, Scotland &amp; Wales</b>	EU Directive 2002/91/EC	



GROUND FLOOR  
GROSS INTERNAL  
FLOOR AREA 818 SQ FT

APPROX. GROSS INTERNAL FLOOR AREA: 818 SQ FT/ 76 SQM

**PROPERTY PHOTO PLANS**.CO.UK  
ONE STOP SHOP FOR PROPERTY MARKETING

This plan is for illustrative purposes only and should be used as such by any prospective client. Whilst every attempt has been made to ensure the accuracy of the Floor Plan contained here, measurements of the doors, windows, rooms and any other items are approximate and no responsibility is taken for any errors, omissions, or misstatement. The services, systems and appliances shown have not been tested and no guarantee as to the operability or efficiency can be given.

The displayed square footage is taken from the floor plans with measurements created using the Royal Institute of Chartered Surveyors' Code of Practice for Measuring. These measurements are approximate and included for illustrative purposes only. Winkworth does not make any representation as to the accuracy of these measurements and you should seek to verify them for yourself. Winkworth accept no liability for any loss you may suffer if you rely on these measurements.

Shepherds Bush | 020 8735 3266 | shepherdsbush@winkworth.co.uk

**Winkworth**

for every step...

Under the Property Misdescriptions Act 1991, these Particulars are a guide and act as information only. All details are given in good faith and are believed to be correct at time of printing. Winkworth give no representation as to their accuracy and potential purchasers or tenants must satisfy themselves by inspection or otherwise as to their correctness. No employee of Winkworth has authority to make or give any representation or warranty in relation to this property.