

## BRADLEY GARDENS, LONDON, W13 £499,950 SHARE OF FREEHOLD

Lease: 125 years from 2014 (approximately 114 years remaining)

Ground Rent: £0 per annum

Service Charge: Ad-Hoc

*(Information supplied by the Seller)*

EPC Band: E

Council Tax Band: D

Ealing & Acton | 0208 896 0123 | ealing@winkworth.co.uk

**Winkworth**

for every step...

winkworth.co.uk



## DESCRIPTION:

Introducing a delightful two-bedroom first-floor flat, brimming with character and potential. Situated within an elegant Edwardian building, this property offers over 720 square feet of space to make your own. Featuring a separate kitchen and reception area, there's ample room to entertain and unwind. While it may benefit from some light modernization, the opportunity to put your personal touch on this charming space awaits. Located conveniently close to West Ealing Tube Station, commuting and exploring the vibrant surrounding area couldn't be easier.



**Winkworth**

for every step...

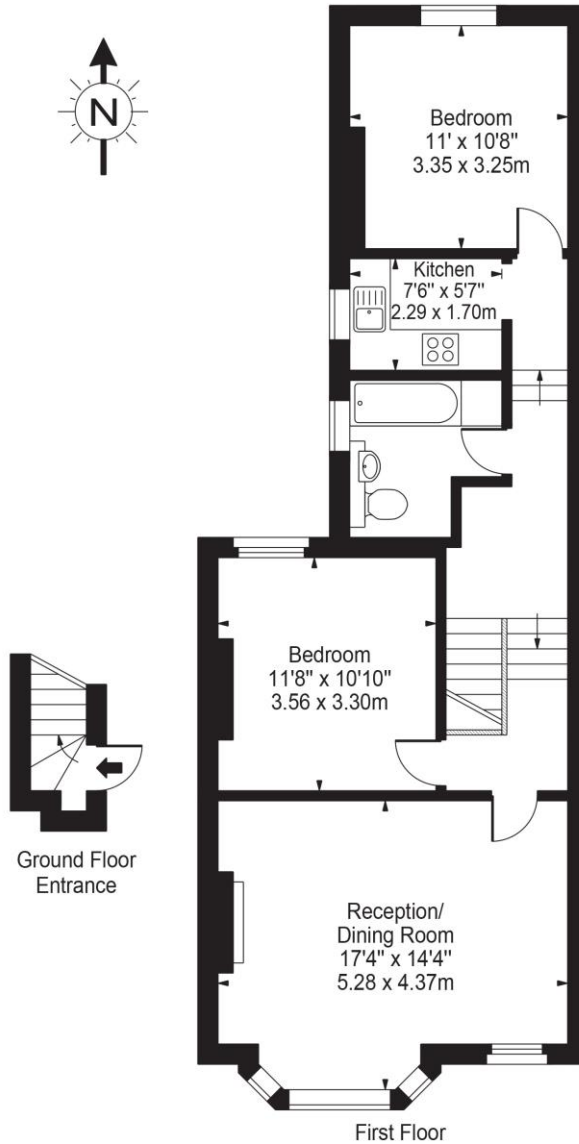
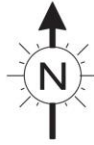


**Winkworth**

for every step...

# Bradley Gardens, W13

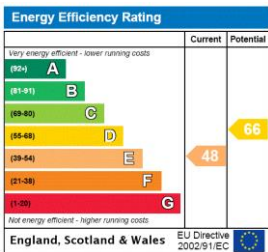
Approx. Gross Internal Area 726 Sq Ft - 67.45 Sq M



For Illustration Purposes Only - Not To Scale Floor Plan by Mira Nikolova Photography

This floor plan should be used as a general outline for guidance only and does not constitute in whole or in part an offer or contract. Any intending purchaser or lessee should satisfy themselves by inspection, searches, enquiries and full survey as to the correctness of each statement. Any areas, measurements or distances quoted are approximate and should not be used to value a property or be the basis of any sale or let.

This floorplan is for illustration purposes only and is not to scale. The position and size of doors, windows, appliances and other features are approximate.



Ealing & Acton | 0208 896 0123 | ealing@winkworth.co.uk



for every step...

winkworth.co.uk

Winkworth wishes to inform prospective buyers and tenants that these particulars are a guide and act as information only. All our details are given in good faith and believed to be correct at the time of printing but they don't form part of an offer or contract. No Winkworth employee has authority to make or give any representation or warranty in relation to this property. All fixtures and fittings, whether fitted or not are deemed removable by the vendor unless stated otherwise and room sizes are measured between internal wall surfaces, including furnishings.