



**GLOUCESTER COURT, GOLDERS GREEN, LONDON, NW11**  
**£585,000 LEASEHOLD**

**A SPACIOUS, NEWLY REFURBISHED AND  
WELL-PRESENTED 3-BEDROOM FLAT IN THE  
SOUGHT-AFTER GLOUCESTER COURT, NW11**

Golders Green | 020 8458 8313 | goldersgreen@winkworth.co.uk

**Winkworth**

for every step...

*winkworth.co.uk*





## DESCRIPTION:

We are delighted to present this spacious, newly refurbished and well-presented ground floor 3-bedroom flat in the sought-after Gloucester Court, NW11. This stylish property boasts three generously sized bedrooms, a bright and airy lounge with fully fitted open plan kitchen perfect for relaxation or entertaining. Additionally, the flat includes two en-suite shower rooms and a family bathroom.

Located in a popular area, this flat offers the perfect blend of comfort and convenience. Just a short walk to Golders Green (Northern Line) Station and a variety of local shops, it provides easy access to transport links and amenities, making it an ideal home for families and professionals alike. Leasehold. Chain free

Early viewings advised.

## AT A GLANCE

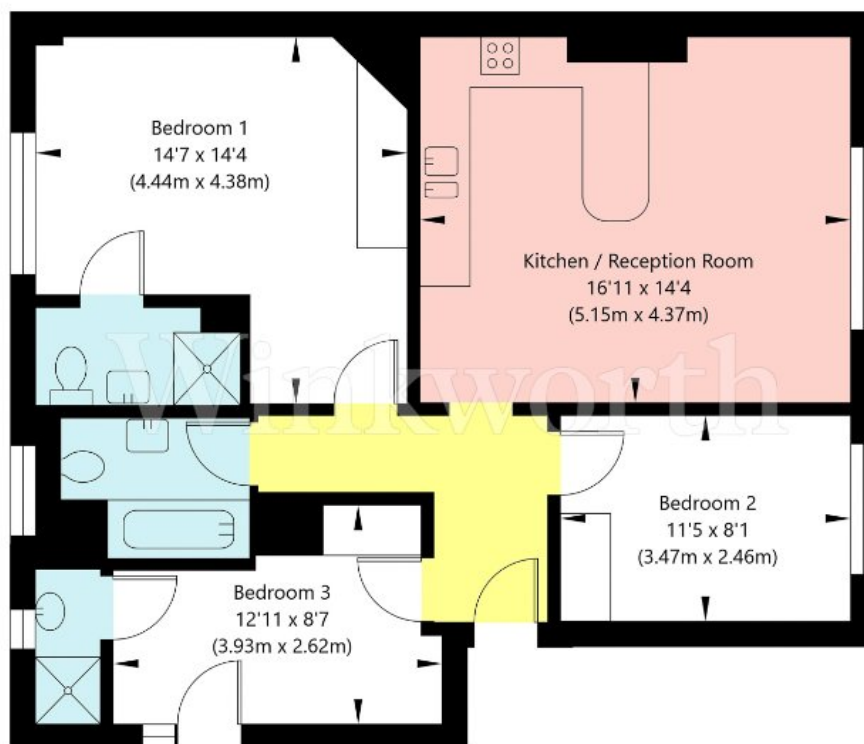
- THREE BEDROOM APARTMENT
- THREE BATHROOMS (TWO EN-SUITE)
- GROUND FLOOR
- POPULAR PURPOSE-BUILT BLOCK
- WELL LOCATED SHORT WALK TO STATION
- CHAIN FREE





Gloucester Court, Golders Green Road, London, NW11 9AE

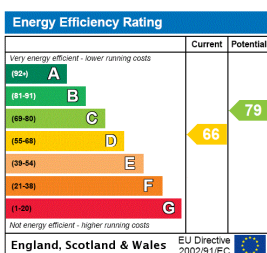
Ground Floor  
GROSS INTERNAL FLOOR AREA  
APPROX. 73.94 SQ M / 796 SQ FT



APPROXIMATE GROSS INTERNAL FLOOR AREA 73.94 SQ M / 796 SQ FT  
THIS FLOOR PLAN IS FOR ILLUSTRATIVE PURPOSES ONLY AND  
SHOULD BE USED FOR THIS PURPOSE BY PROSPECTIVE APPLICANTS AS ITS NOT TO SCALE.

(c) AMBERSHORE PIX LIMITED / PHOTO - VIDEO - FLOOR PLANS / 0800 999 1577 / WWW.AMERSHOREPIX.CO.UK

This floorplan is for illustration purposes only and is not to scale. The position and size of doors, windows, appliances and other features are approximate.



**Tenure:** Leasehold

**Term:** 0 year and 0 months

**Service Charge:** £0 per annum

**Ground Rent:** £ 0 Annually (subject to increase)

**Council Tax Band:**

Where no figures are shown, we have been unable to ascertain the information. All figures that are shown were correct at the time of printing.

Golders Green | 020 8458 8313 | goldersgreen@winkworth.co.uk

**Winkworth**

for every step...

winkworth.co.uk

Winkworth wishes to inform prospective buyers and tenants that these particulars are a guide and act as information only. All our details are given in good faith and believed to be correct at the time of printing but they don't form part of an offer or contract. No Winkworth employee has authority to make or give any representation or warranty in relation to this property. All fixtures and fittings, whether fitted or not are deemed removable by the vendor unless stated otherwise and room sizes are measured between internal wall surfaces, including furnishings.