



**HOLDER CLOSE, READING, BERKSHIRE, RG2 9HQ**  
**£3,500 PER MONTH UNFURNISHED**

**A SUBSTANTIAL FIVE BEDROOM DETACHED FAMILY HOME SET IN A QUIET CUL DE SAC.**

Reading | 0118 4022 300 | [reading@winkworth.co.uk](mailto:reading@winkworth.co.uk)

**Winkworth**

for every step...

[winkworth.co.uk](http://winkworth.co.uk)



## DESCRIPTION:

A substantial detached five bedroom family home set in a desirable location within Shinfield village. The property is set in a quiet cul de sac and provides driveway parking for several cars and a double garage. The property comprises a large living room with double doors opening onto a south facing garden, an open plan kitchen/dining room, a formal dining room, an office, five double bedrooms, two with en suite bathrooms and a further four piece suite family bathroom. Available now. Unfurnished.

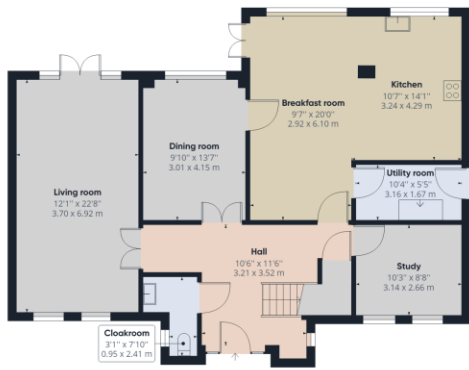
## AT A GLANCE

- Executive Five bedroom detached family home
- Set in sought after location
- Double garage
- Council tax band G
- Available now
- Unfurnished
- Pets considered

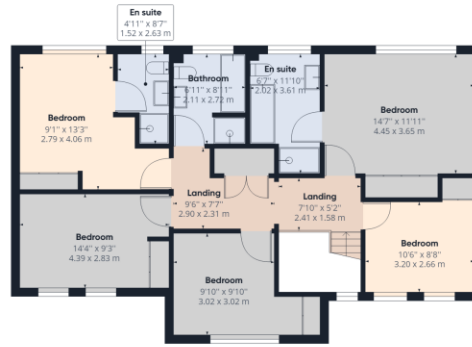




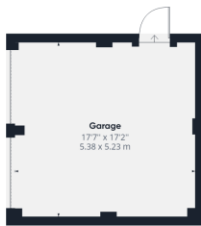




Ground Floor Building 1



Floor 1 Building 1



Ground Floor Building 2

Approximate total area<sup>(1)</sup>  
2439.20 ft<sup>2</sup>  
226.61 m<sup>2</sup>

(1) Excluding balconies and terraces

While every attempt has been made to ensure accuracy, all measurements are approximate, not to scale. This floor plan is for illustrative purposes only.

GIRAFFE360

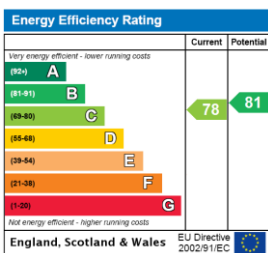
This floorplan is for illustration purposes only and is not to scale. The position and size of doors, windows, appliances and other features are approximate.

Deposit: £4,038.46

Holding Deposit: £807.69

Council Tax Band: G

Where no figures are shown, we have been unable to ascertain the information. All figures that are shown were correct at the time of printing.



Reading | 0118 4022 300 | reading@winkworth.co.uk



for every step...

winkworth.co.uk

Winkworth wishes to inform prospective buyers and tenants that these particulars are a guide and act as information only. All our details are given in good faith and believed to be correct at the time of printing but they don't form part of an offer or contract. No Winkworth employee has authority to make or give any representation or warranty in relation to this property. All fixtures and fittings, whether fitted or not are deemed removable by the vendor unless stated otherwise and room sizes are measured between internal wall surfaces, including furnishings.