



High Street, Petersfield, Hampshire, GU32

Guide Price: £1,450 per calendar month

In the heart of the town centre, a duplex apartment offering spacious and light accommodation with a south-facing roof terrace.

Three bedrooms, bathroom, en suite shower room, open plan reception room, kitchen/breakfast room, cloakroom with WC and roof terrace.

EPC Rating: "D" (60)

Winkworth

...for every step

winkworth.co.uk/Petersfield 01730 267274



DESCRIPTION

The property is a first and second floor duplex apartment in the heart of the town centre with its own external front door. The layout can be seen in the floorplan but of particular note is the tremendous main reception space with a pleasant aspect down over the High Street. At the rear of the building is a kitchen/breakfast room and being on the south side, is lovely and bright. There is also a cloakroom with WC. Stairs rise to the top floor landing, off which are three bedrooms and a bathroom. One of the bedrooms has its own en suite shower room. Outside, the property is approached by its own external staircase leading up to the front door. On the south side of the building is a roof terrace; the perfect spot to unwind during the long summer afternoons. An internal viewing is strongly recommended.



LOCATION

The property is situated on Petersfield's High Street and is therefore extremely convenient for all that the town has to offer. The town is situated in the heart of The South Downs National Park and offers a variety of amenities in a bustling centre. Shops include Tesco, Waitrose, M&S Food, and there are numerous boutiques, cafes and further shops. The train station provides a service to London Waterloo to the north (in approximately an hour) and Portsmouth to the south. The town has many active clubs and societies with golf available at Petersfield and Liphook, horse and motor racing at Goodwood, polo at Cowdray Park and sailing along the South Coast.

Services: Mains gas, electricity, water and drainage.

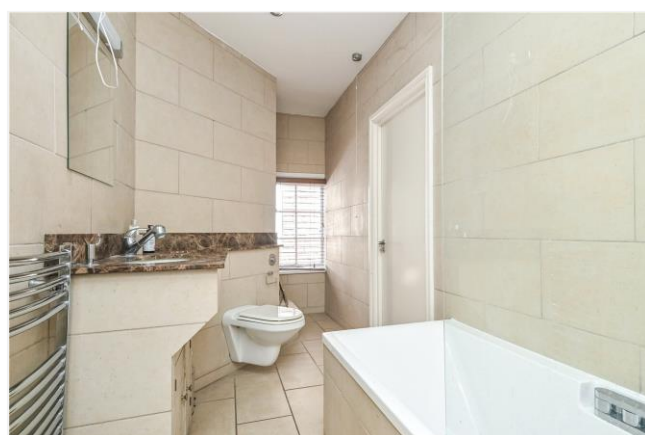
Ref: AB/240126/1

LOCAL AUTHORITY

East Hampshire District Council, Petersfield. Band D.

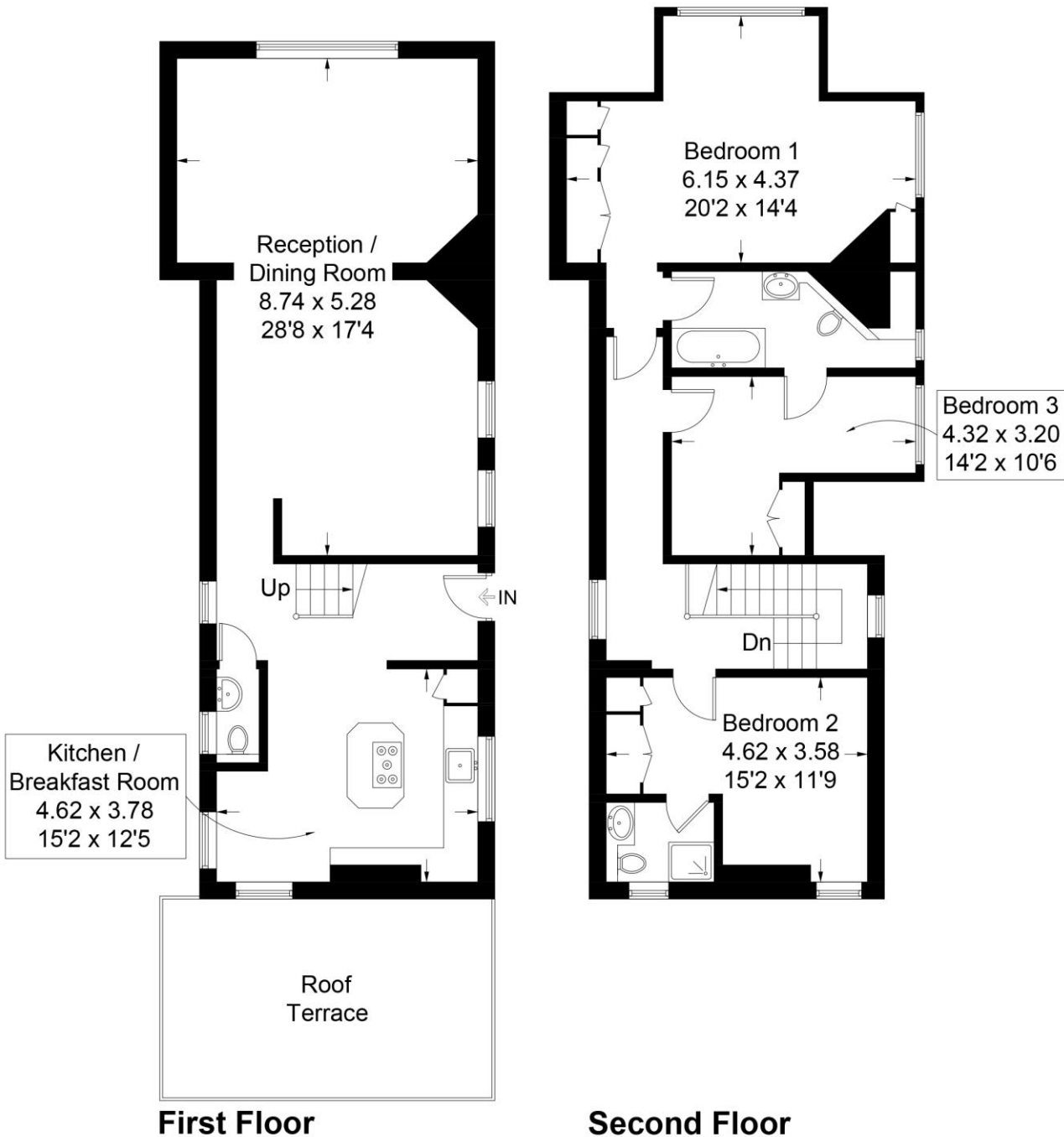
DIRECTIONS

The property is situated opposite our office at 26 High Street. For viewings, please meet at our office.



High Street, GU32

Approximate Gross Internal Area = 142.5 sq m / 1534 sq ft



PRODUCED FOR WINKWORTH ESTATE AGENTS.

Whilst every attempt has been made to ensure the accuracy of the floorplan, measurements of doors, windows and rooms are approximate. These plans are for representation purposes only as defined by RICS Code of Measuring Practice and used as such by any prospective purchaser. Created by Emzo Marketing 2024.

Under the Consumer Protection from Unfair Trading Regulations 2008 (CPR), these Particulars are a guide and act as information only. All details are given in good faith and are believed to be correct at time of printing. Winkworth give no representation as to their accuracy and potential purchasers or tenants must satisfy themselves by inspection or otherwise as to their correctness. No employee of Winkworth has authority to make or give any representation or warranty in relation to this property.