



LEAMINGTON ROAD VILLAS, W11

**£2,250,000** LEASEHOLD

**A SALE OF THREE FLATS IN THE SAME BUILDING  
ON THIS MUCH SOUGHT AFTER STREET IN  
NOTTING HILL.**

Notting Hill Sales | 0207 727 3227 | [nottinghill@winkworth.co.uk](mailto:nottinghill@winkworth.co.uk)

**Winkworth**

for every step...

[winkworth.co.uk](http://winkworth.co.uk)



**DESCRIPTION:**

A sale of three flats in the same building on this much sought after street in Notting Hill.

**First Floor**

Two bedroom bay window flat extending to 587sq.ft.

**Second Floor**

Two bedroom flat extending to 564sq.ft.

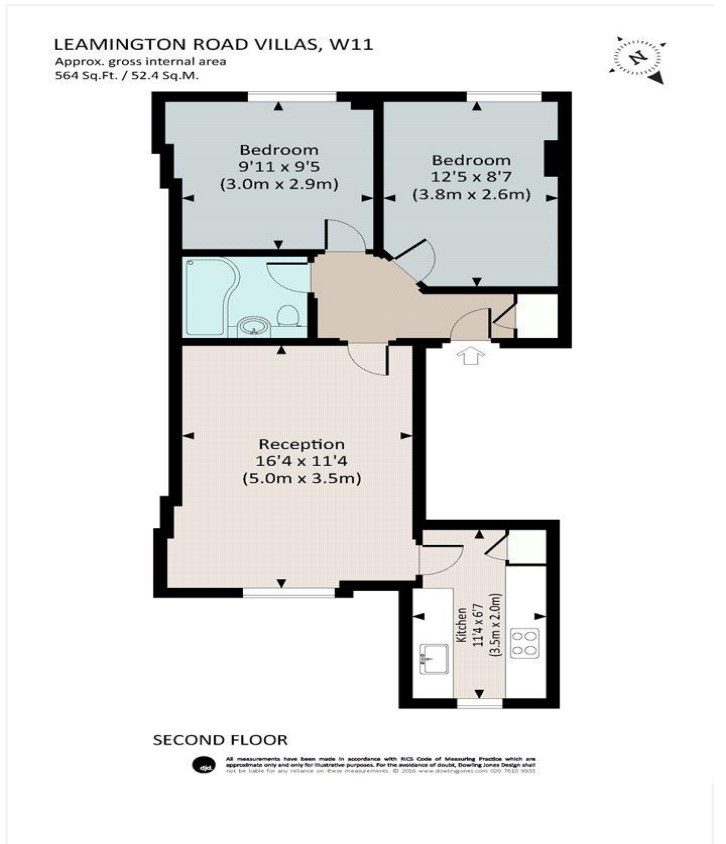
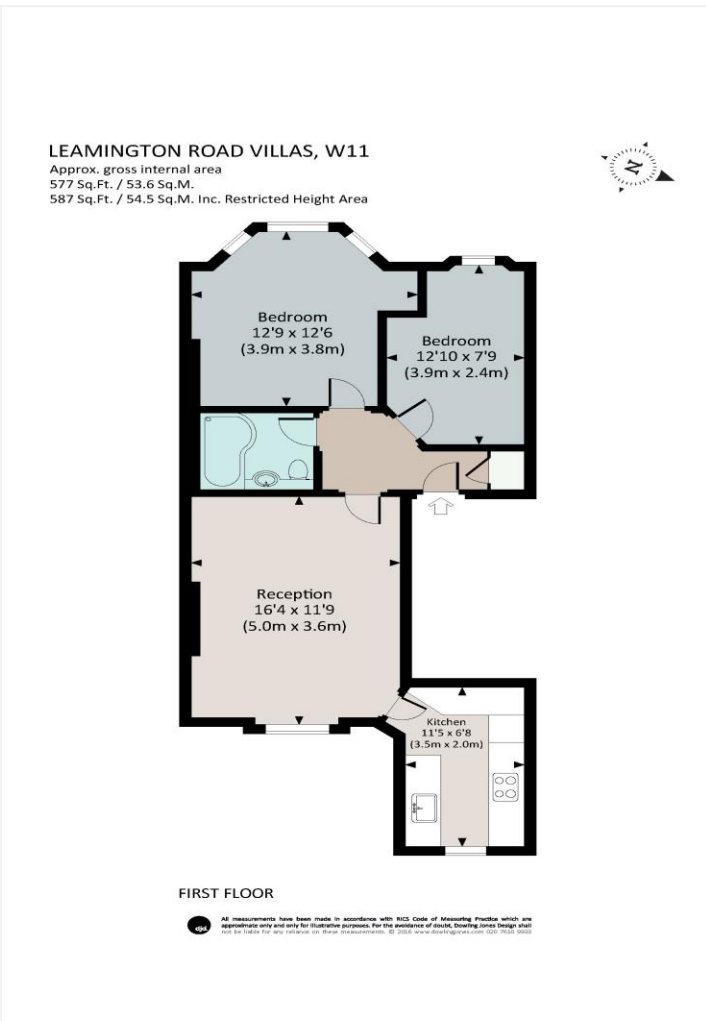
**Third Floor**

Two bedroom flat extending to 587sq.ft.

**LOCATION:**

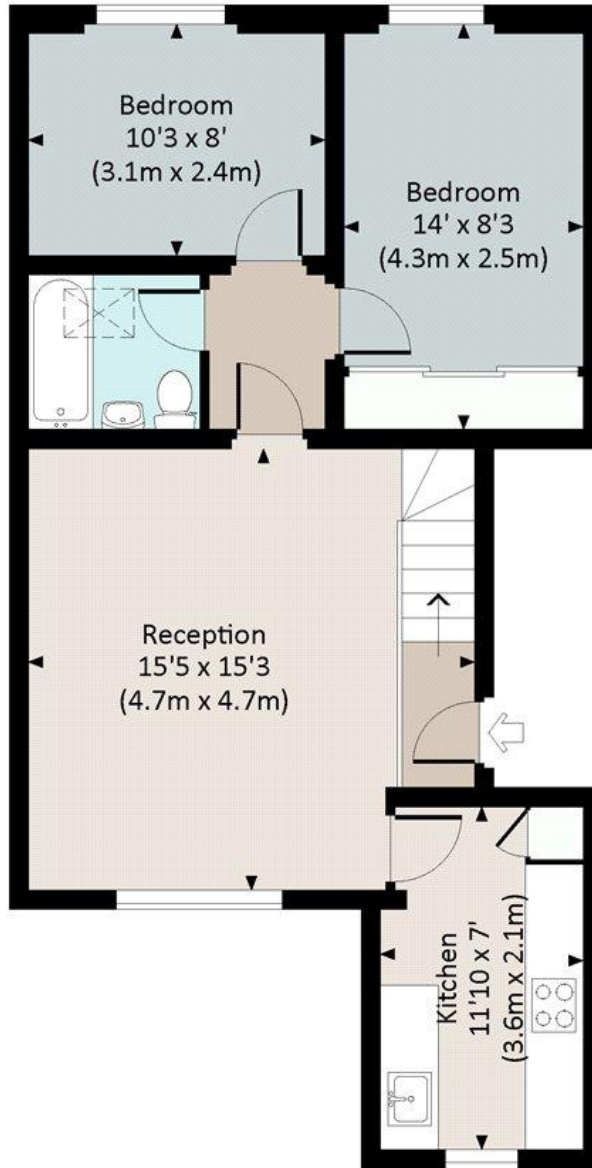
Leamington Road Villas is a peaceful, tree lined street running north from Westbourne Park Road, just round the corner from Westbourne Park underground station and a short stroll from Ledbury Road, Westbourne Grove and many of Notting most popular bars and restaurants.





# LEAMINGTON ROAD VILLAS, W11

Approx. gross internal area  
587 Sq Ft. / 54.5 Sq M.

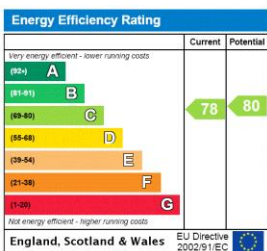


THIRD FLOOR



All measurements have been made in accordance with RICS Code of Measuring Practice which are approximate only and only for illustrative purposes. For the avoidance of doubt, Dowling Jones Design shall not be liable for any reliance on these measurements. © 2017 www.dowlingjones.com 020 7610 9933

This floorplan is for illustration purposes only and is not to scale. The position and size of doors, windows, appliances and other features are approximate.



**Tenure:** Leasehold

**Term:** 125 year and 0 months

**Service Charge:** £TBC

**Ground Rent:** £ 0 Annually (subject to increase)

**Council Tax Band:** E

Where no figures are shown, we have been unable to ascertain the information. All figures that are shown were correct at the time of printing.

Notting Hill Sales | 0207 727 3227 | nottinghill@winkworth.co.uk

**Winkworth**

for every step...

winkworth.co.uk

Winkworth wishes to inform prospective buyers and tenants that these particulars are a guide and act as information only. All our details are given in good faith and believed to be correct at the time of printing but they don't form part of an offer or contract. No Winkworth employee has authority to make or give any representation or warranty in relation to this property. All fixtures and fittings, whether fitted or not are deemed removable by the vendor unless stated otherwise and room sizes are measured between internal wall surfaces, including furnishings.