



PETTICOAT TOWER, PETTICOAT SQUARE, LONDON, E1  
**£350,000 LEASEHOLD**

## SPACIOUS ONE-BEDROOM APARTMENT CLOSE TO LIVERPOOL STREET WITH PRIVATE BALCONY

Shoreditch | 020 7749 7650 | [shoreditch@winkworth.co.uk](mailto:shoreditch@winkworth.co.uk)

**Winkworth**



## DESCRIPTION:

Winkworth are pleased to offer to market this lovely 501sqft, one bedroom flat, with truly amazing views of The Gherkin and the City skyline.

The property is located on the fifth floor and comprises entrance hall with storage cupboard leading to a spacious and bright open plan kitchen/living room with south-west facing balcony, double bedroom, and family bathroom. The apartment also features wood-effect flooring, fully fitted kitchen with gas hob/electric oven, dishwasher, and space for a full-length fridge/freezer.

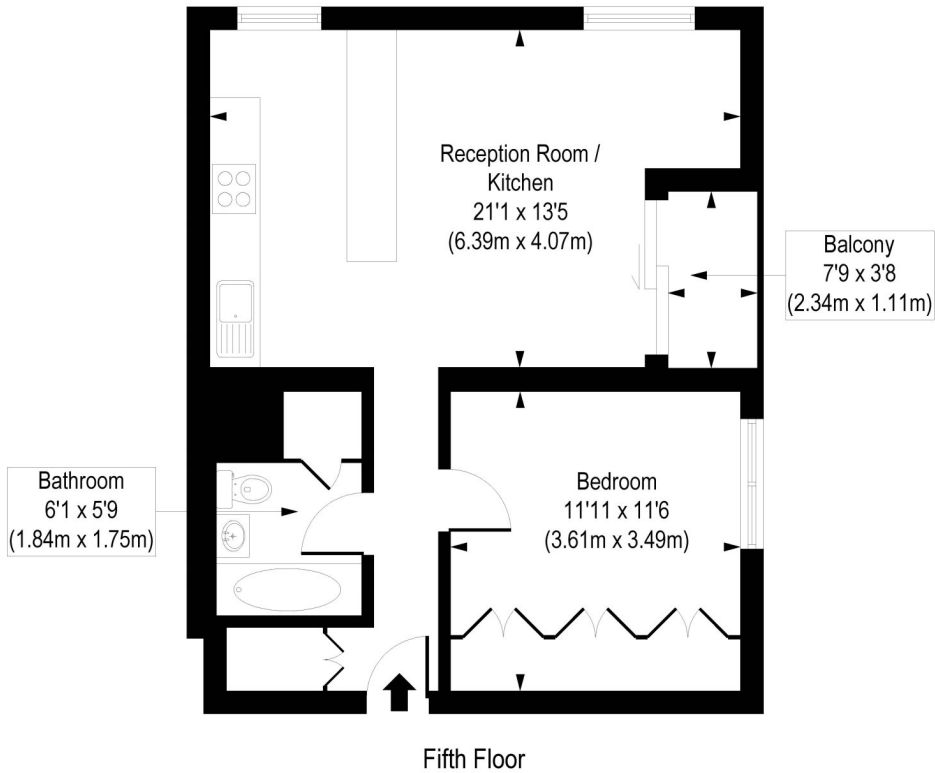
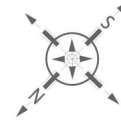
Petticoat Tower benefits from an estate car park and extra storage that can be rented at an additional annual cost. Communal gardens can be found on the first floor and the development is ideally located within close proximity of Aldgate, Aldgate East and Liverpool Street Stations (Central, Circle, Metropolitan, Hammersmith & City Lines) offering excellent access across London. Spitalfields Market, Brick Lane and Shoreditch High Street are also close by offering an array of boutique shops, cafes, pop-ups, bars, pubs and restaurants.

**Winkworth**



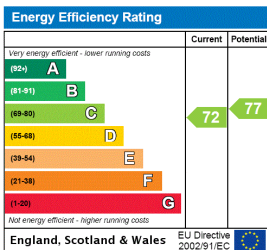
**Winkworth**

Petticoat Tower, Petticoat Square, E1  
 Approx. Gross Internal Floor Area 501 sq. ft / 46.50 sq. m



COMPLIANT WITH RICS CODE OF MEASURING PRACTICE. Floorplan is for illustrative purposes only and is not to scale. Every attempt has been made to ensure the accuracy of the floorplan shown, however all measurements, fixtures, fittings and data shown are an approximate interpretation for illustrative purposes only. Liability for errors, omissions or mis-statement through negligence or otherwise is hereby excluded.

This floorplan is for illustration purposes only and is not to scale. The position and size of doors, windows, appliances and other features are approximate.



Shoreditch | 020 7749 7650 | shoreditch@winkworth.co.uk



winkworth.co.uk

See things differently

Winkworth wishes to inform prospective buyers and tenants that these particulars are a guide and act as information only. All our details are given in good faith and believed to be correct at the time of printing but they don't form part of an offer or contract. No Winkworth employee has authority to make or give any representation or warranty in relation to this property. All fixtures and fittings, whether fitted or not are deemed removable by the vendor unless stated otherwise and room sizes are measured between internal wall surfaces, including furnishings.