



38 MOUNT ROAD

THATCHAM RG18 4LA

A beautifully presented three double bedroom family home with off street parking and a great sized rear garden.

As you enter the property, you have the living room on your right. The room is flooded with natural light and has a feature fireplace. The dining room is a separate space from the kitchen and has French doors onto the rear garden. The kitchen has white units and a neutral worktop. You also have the bonus of a utility room/cloakroom.

Upstairs are three great sized bedrooms. All three rooms have been redecorated throughout with new carpets and paint. The family bathroom is extremely modern with grey stone tiling throughout, a large walk-in shower and separate bath.

The rear garden has a large decked area and the rest of the garden is mainly laid to lawn. To the front of the property is a gravel driveway with ample parking.



Winkworth

AT A GLANCE

- 1068ft²/99m²
- Living Room
- Dining Room
- Kitchen
- Utility Room/Cloak Room
- Three Double Bedrooms

UTILITIES

The property is connected to all mains and operates on gas central heating. There are no known mobile coverage issues and there is Ultrafast broadband available in the area.

West Berkshire Council Tax Band - C
EPC - C

SITUATION

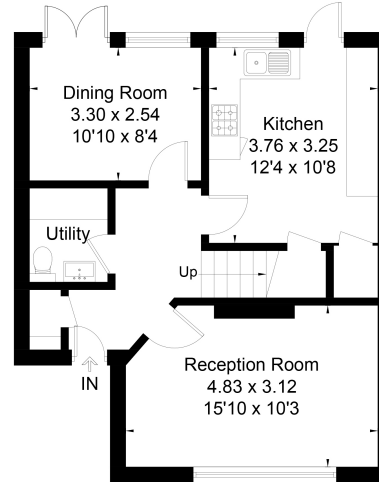
Located in the heart of Thatcham, close to The Broadway, this property has excellent links to Newbury town and with the train station, can easily get to both Reading and London Paddington.

DIRECTIONS

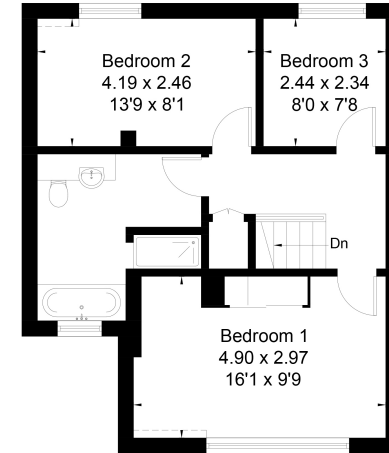
What3words///reform.tower.atomic



Approximate Floor Area = 99.1 sq m / 1068 sq ft



Ground Floor



First Floor



Drawn for illustration and identification purposes only by @fourwalls-group.com #77206



Newbury Office

43 Northbrook Street, Newbury, Berkshire RG14 1DT
01635 552552 | newbury@winkworth.co.uk

[winkworth.co.uk/newbury](https://www.winkworth.co.uk/newbury)

Winkworth

See things differently.