



Ashley Park, Ashley Heath

Ringwood, BH24 2HA

Offers Over £600,000

Winkworth



**OFFERS OVER £600,000
FREEHOLD**

An immaculate and deceptively spacious three bedroom detached bungalow, in excellent condition throughout.

Positioned in this ever popular residential location, a short walk from The Castleman Railway and Moors Valley and further benefiting from a south facing garden and a double garage.

Three Bedrooms
Plumbing In Place For En-suite To Main Bedroom
Close To Castleman Railway & Moors Valley
Kitchen/Diner
No Onward Chain
Detached Bungalow
Off Street Parking
Cloakroom With Hand Basin & W.C
Wrap Around Style South Facing Garden
Excellent Condition Throughout
Detached Double Garage
Bathroom With Bath & Separate Shower

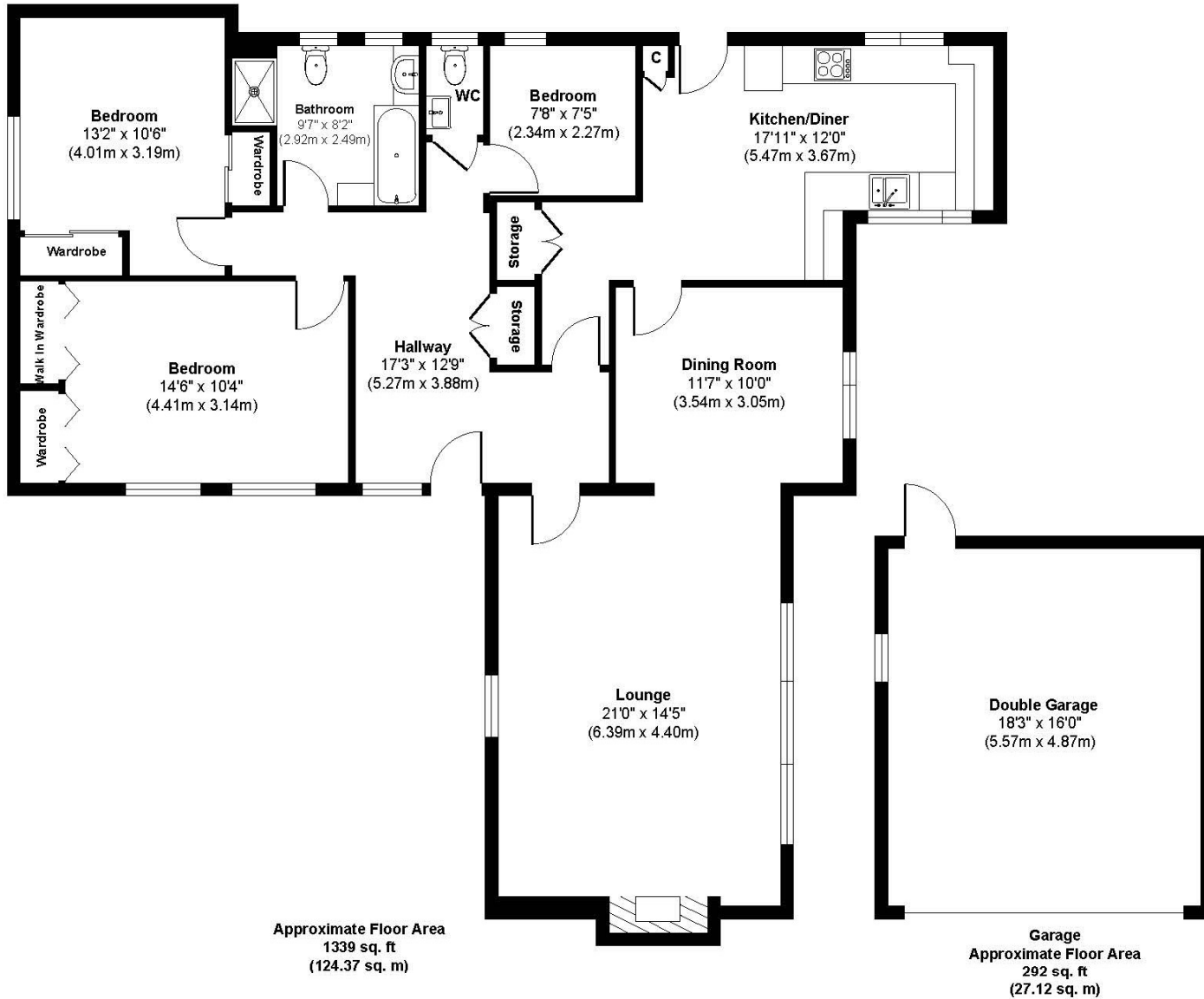
Council Tax Band F EPC C

01202 434365

ferndown@winkworth.co.uk



Ashley Park



Approx. Gross Internal Floor Area 1631 sq. ft / 151.49 sq. m (including garage)

Illustration for identification purposes only, measurements approximate and not to scale



LOCATION

Ashley Park is a quiet residential area within easy walking distance to the reputedly shortest high street in England as well as local convenience stores. There are bus routes nearby giving you easy access to Ringwood, Ferndown, Bournemouth & Poole, all of which offer an excellent range of shops, bars, restaurants and leisure facilities. There are award winning beaches just twenty minutes away and the A31 provides quick access to the New Forest, Southampton and London for the commuter by car.

Winkworth Ferndown

406 Ringwood Road, Ferndown, Dorset, BH22 9AU

01202 434365 | ferndown@winkworth.co.uk

winkworth.co.uk/ferndown

Winkworth