



**WATERLOO GARDENS, MILNER SQUARE, ISLINGTON, N1
OFFERS IN EXCESS OF £475,000 LEASEHOLD**

A 576 SQ. FT. ONE BED APARTMENT SET WITHIN A PRIVATE COMPLEX JUST OFF UPPER STREET

Islington | 0207 354 2480 | islington@winkworth.co.uk

Winkworth

winkworth.co.uk

See things differently



DESCRIPTION:

A 576 sq. ft. one bedroom set over the ground floor within a well maintained private complex in the heart of Angel. The flat has been refurbished to a high standard with wooden flooring, excellent storage and large bright windows throughout. The property further benefits from a private off-street secure parking space, porter, a long lease and is offered to the market chain free.

Waterloo Gardens is situated on Milner Square, one of Islington most prestigious garden square locations. The property is just a short distance from a vast selection of restaurants, bars and shops on Upper Street as well as being withing striking distance from a number hugely popular gastro pubs. An array of brilliant transport links are on hand with a number of options for easy travel across London. Angel station (Northern line) and Highbury and Islington (Victoria line and overground) are both within easy reach whilst a large number of bus routes facilitate effortless access to the City and West End. St Pancras is also close by for convenient international transport links.

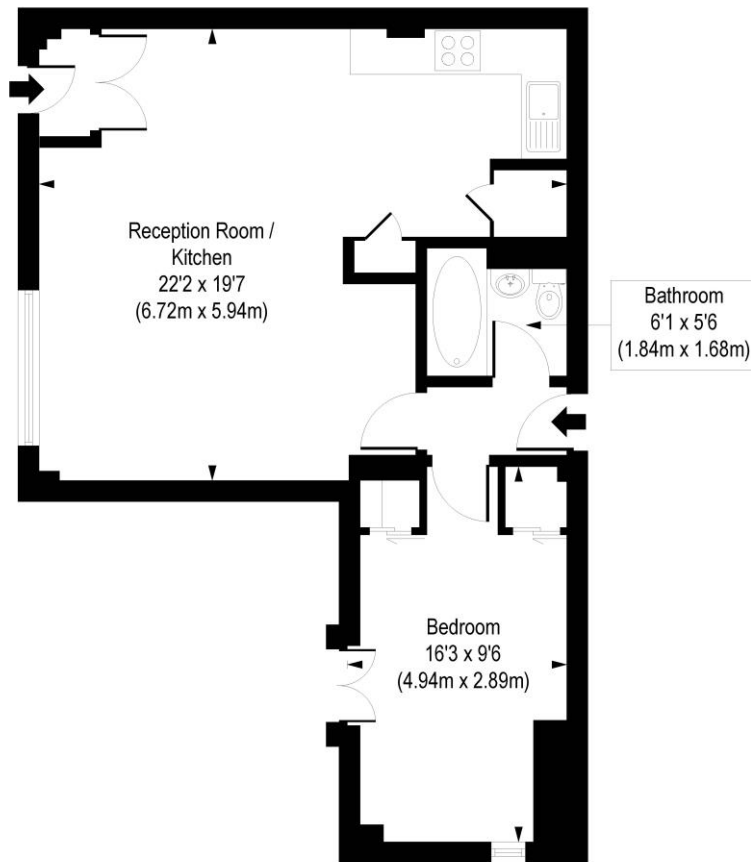
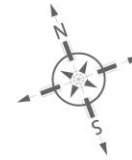
Any associated charges including, but not limited to, service charge, ground rent and sinking funds outlined in the marketing material is an approximation calculated using information provided by and described by the client at the time of instruction. The actual cost may be subject to change and therefore we recommend all interested parties carry out their own enquiries.

Winkworth



Winkworth

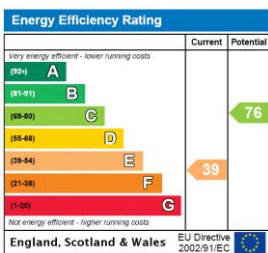
Waterloo Gardens, Milner Square, N1
 Approx. Gross Internal Floor Area 576 sq. ft / 53.55 sq. m



Ground Floor

COMPLIANT WITH RICS CODE OF MEASURING PRACTICE. Floorplan is for illustrative purposes only and is not to scale. Every attempt has been made to ensure the accuracy of the floorplan shown, however all measurements, fixtures, fittings and data shown are an approximate interpretation for illustrative purposes only. Liability for errors, omissions or mis-statement through negligence or otherwise is hereby excluded.

This floorplan is for illustration purposes only and is not to scale. The position and size of doors, windows, appliances and other features are approximate.



Islington | 0207 354 2480 | islington@winkworth.co.uk



winkworth.co.uk

See things differently

Winkworth wishes to inform prospective buyers and tenants that these particulars are a guide and act as information only. All our details are given in good faith and believed to be correct at the time of printing but they don't form part of an offer or contract. No Winkworth employee has authority to make or give any representation or warranty in relation to this property. All fixtures and fittings, whether fitted or not are deemed removable by the vendor unless stated otherwise and room sizes are measured between internal wall surfaces, including furnishings.