



SOUTHEY ROAD, LONDON, N15
£450,000 LEASEHOLD

DESCRIPTION:

This well-presented two-bedroom period maisonette features a private front entrance and ++shared garden, ideally situated close to Seven Sisters BR-Underground Station.

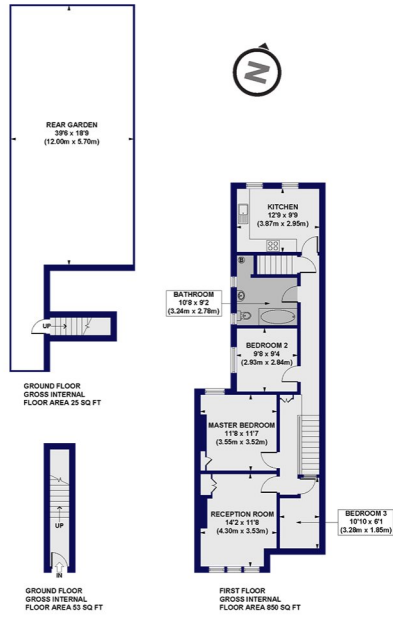
Harringay | 020 8800 5151 | harringay@winkworth.co.uk



for every step...

winkworth.co.uk

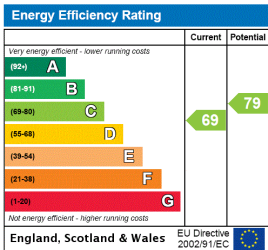
Southey Road, N15
 Approx. Gross Internal Floor Area 929 sq. ft / 86.28 sq. m



All measurements of walls, doors, windows, fittings and appliances, including their size and location, are shown as indicated above and do not constitute an explicit or implied representation by the seller. The seller does not warrant the accuracy of the information contained in these plans. This plan is for illustrative purposes only and should be used in such by any prospective purchasers.



This floorplan is for illustration purposes only and is not to scale. The position and size of doors, windows, appliances and other features are approximate.



Tenure: Leasehold

Term: 0 year and 0 months

Service Charge: £0 per annum

Ground Rent: £ 0 Annually (subject to increase)

Council Tax Band:

Where no figures are shown, we have been unable to ascertain the information. All figures that are shown were correct at the time of printing.

Harringay | 020 8800 5151 | harringay@winkworth.co.uk



for every step...

winkworth.co.uk

Winkworth wishes to inform prospective buyers and tenants that these particulars are a guide and act as information only. All our details are given in good faith and believed to be correct at the time of printing but they don't form part of an offer or contract. No Winkworth employee has authority to make or give any representation or warranty in relation to this property. All fixtures and fittings, whether fitted or not are deemed removable by the vendor unless stated otherwise and room sizes are measured between internal wall surfaces, including furnishings.