



BATHURST GARDENS, NW10
£5,750 PER MONTH PART FURNISHED

FABULOUS FOUR BEDROOM FAMILY HOME IN THE HEART OF KENSAL RISE.

Kensal Rise & Queens Park | 0208 960 4947 | kensalrise@winkworth.co.uk

Winkworth

for every step...

winkworth.co.uk



DESCRIPTION:

Split over three floors and full extended into both the loft and the side, this family home is available to rent from early April 2025

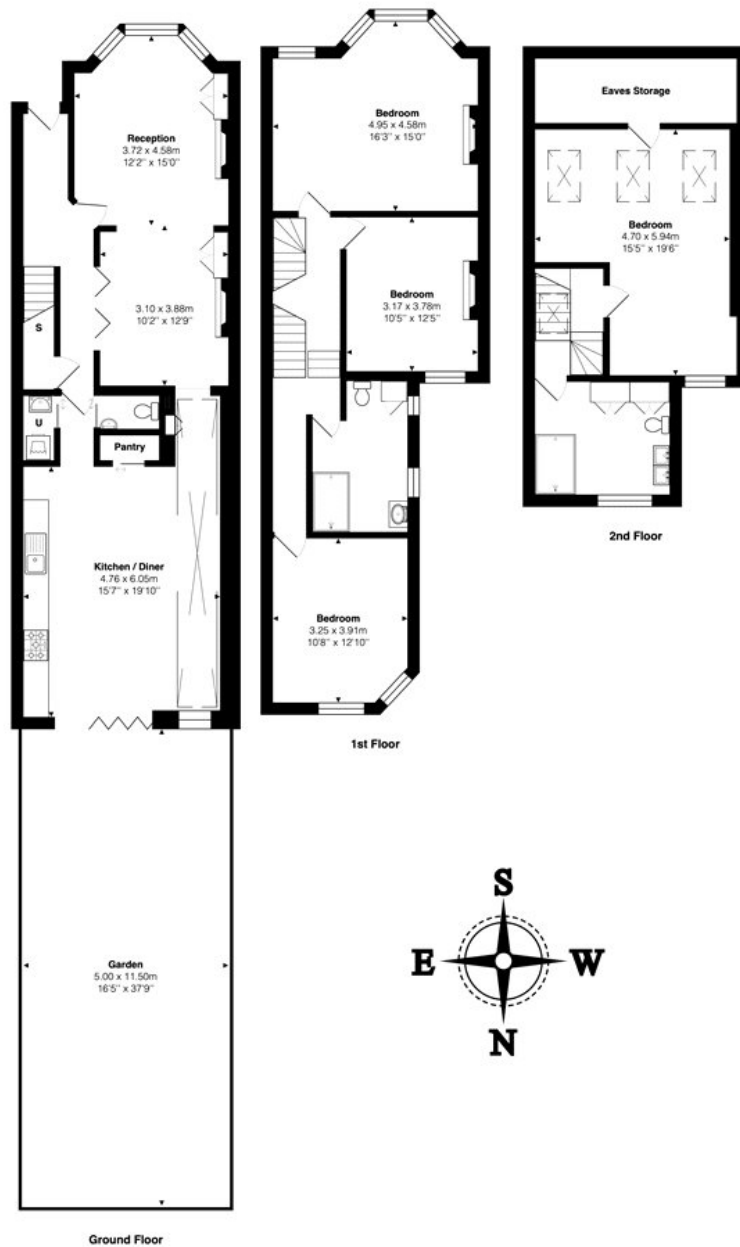
The ground floor comprises of a lovely double aspect reception room with many period features and large kitchen diner with integrated appliances leading through bi-folding doors to the private garden.

There are three double bedrooms and a family bathroom located on the first floor with the rear bedroom having vaulted ceilings and a mezzanine storage space.

The top floor is slightly staggered with a large family bathroom and spacious loft conversion bedroom.

The property boasts high quality fixtures and fittings, wooden flooring in places, a separate utility Room & W/C - (Separate Washer / Dryer), wine fridge, larder with sliding blackboard door, space saving pocket doors, feature Fireplaces (not in use), security alarm system, HIVE heating system and ample storage





Total Area: 186.9 m² ... 2012 ft² (excluding garden)
 All measurements are approximate and for display purposes only

This floorplan is for illustration purposes only and is not to scale. The position and size of doors, windows, appliances and other features are approximate.

Energy Efficiency Rating		Current	Potential
Very energy efficient - lower running costs			
(92-100)	A		
(81-91)	B		83
(69-80)	C	73	
(55-68)	D		
(39-54)	E		
(21-38)	F		
Not energy efficient - higher running costs			
(1-20)	G		

England, Scotland & Wales EU Directive 2002/91/EC

Deposit: 6 weeks rent
Holding Deposit: 1 weeks rent
Council Tax Band: E

Where no figures are shown, we have been unable to ascertain the information. All figures that are shown were correct at the time of printing.



Kensal Rise & Queens Park | 0208 960 4947 | kensalrise@winkworth.co.uk

for every step...

winkworth.co.uk

Winkworth wishes to inform prospective buyers and tenants that these particulars are a guide and act as information only. All our details are given in good faith and believed to be correct at the time of printing but they don't form part of an offer or contract. No Winkworth employee has authority to make or give any representation or warranty in relation to this property. All fixtures and fittings, whether fitted or not are deemed removable by the vendor unless stated otherwise and room sizes are measured between internal wall surfaces, including furnishings.