



2B BOLLO LANE, CHISWICK, W4

£1,500 PER MONTH FURNISHED, PART FURNISHED, UNFURNISHED

STUNNING 1-BED GARDEN FLAT IN MODERN DEVELOPMENT

Chiswick | 020 8994 7096 | chiswick@winkworth.co.uk

Winkworth

for every step...

winkworth.co.uk



DESCRIPTION:

An immaculately presented ground floor garden flat in this modern development near Chiswick Park Tube Station.

The property is neutrally decorated throughout and the accommodation comprises a spacious open-plan kitchen/reception room leading to a large private garden which backs onto Gunnersbury Nature Reserve,



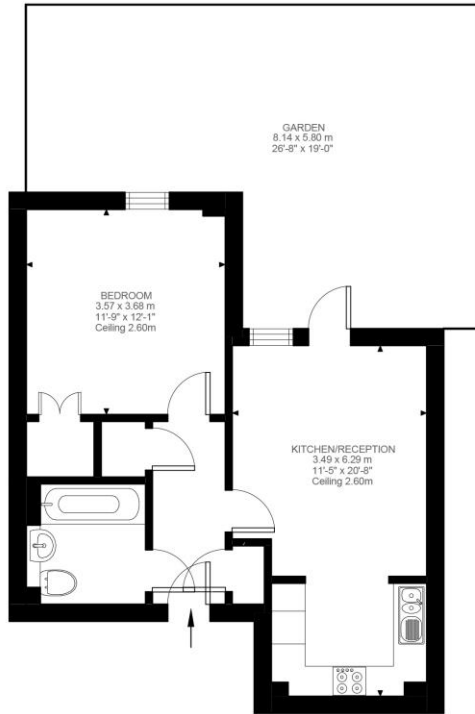
Winkworth

for every step...



Winkworth

for every step...



Bollo Lane, W4
Approximate Gross Internal Area
46.87 SQ.M / 504 SQ.FT

Ground Floor
504 ft²

Illustration for identification purposes only. Not to scale.
Floor Plan Drawn According To RICS Guidelines.

This floorplan is for illustration purposes only and is not to scale. The position and size of doors, windows, appliances and other features are approximate.

Chiswick | 020 8994 7096 | chiswick@winkworth.co.uk

Winkworth

for every step...

winkworth.co.uk

Winkworth wishes to inform prospective buyers and tenants that these particulars are a guide and act as information only. All our details are given in good faith and believed to be correct at the time of printing but they don't form part of an offer or contract. No Winkworth employee has authority to make or give any representation or warranty in relation to this property. All fixtures and fittings, whether fitted or not are deemed removable by the vendor unless stated otherwise and room sizes are measured between internal wall surfaces, including furnishings.