


Townsend Way, Metheringham, Lincoln

Approximate gross internal area:

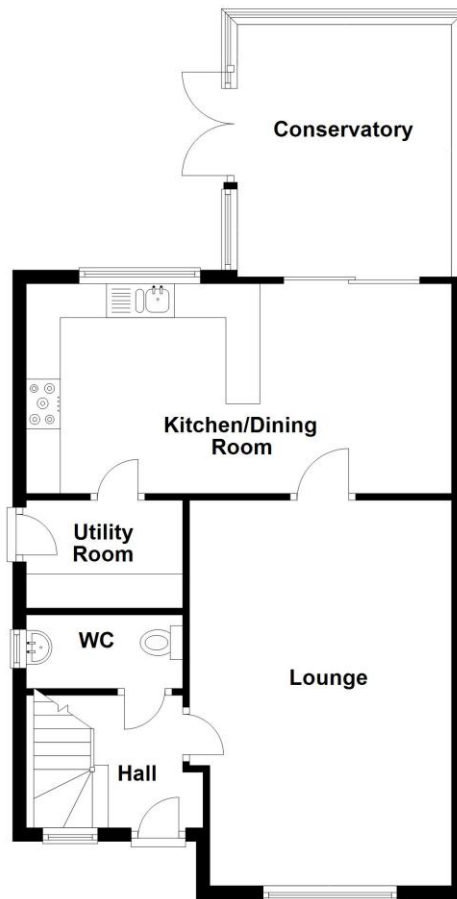
Main house	Insert measurements
Insert area	Insert measurements
Insert area	Insert measurements
Total	Insert total

This floorplan is for illustration purposes only and is not to scale. The position and size of doors, windows, appliances and other features are approximate.

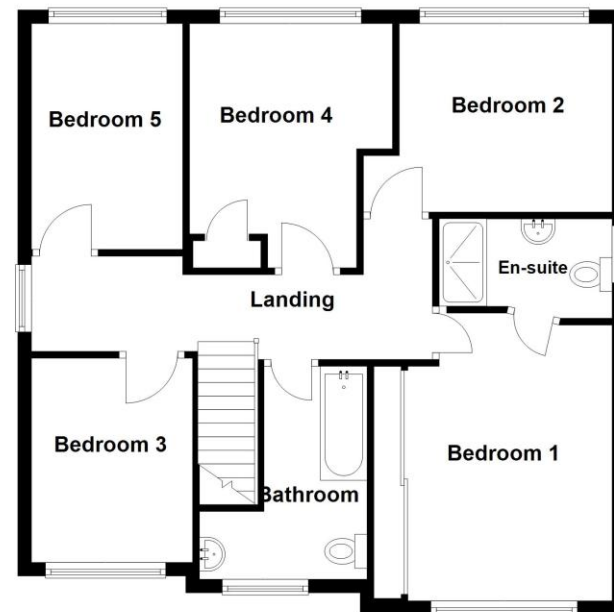
Energy Efficiency Rating		Current	Potential
Very energy efficient - lower running costs			
(92+)	A		
(81-91)	B		86
(69-80)	C	75	
(55-68)	D		
(39-54)	E		
(21-38)	F		
(1-20)	G		
Not energy efficient - higher running costs			
England, Scotland & Wales		EU Directive 2002/91/EC	



Ground Floor
Approx. 65.2 sq. metres (701.5 sq. feet)



First Floor
Approx. 70.4 sq. metres (757.7 sq. feet)



Total area: approx. 135.6 sq. metres (1459.2 sq. feet)

1 Townsend Way, Metheringham, Lincoln, Lincolnshire, LN4 3GB

£395,000 Freehold

This Extended Five Bedroom Detached Family Home is located in the popular village of Metheringham, offering spacious living accommodation and excellent local amenities.

Internally, the property comprises of an Entrance Hall, Downstairs W/C, Lounge, Kitchen/Diner, Utility Room, Conservatory, and a first-floor landing. There are Five Well-proportioned Bedrooms, including a Master Bedroom with an En-suite, as well as a Family Bathroom and a large loft space ideal for storage.

FIVE WELL PROPORTIONED BEDROOMS | ENSUITE TO MASTER | EXTENDED FAMILY HOME | AMPLE PARKING | NON OVERLOOKED REAR GARDEN | GARAGE & CAR PORT | WELL PRESENTED THROUGHOUT | POPULAR VILLAGE LOCATION | VIEWING HIGHLY ADVISED



En-suite

Bedroom 2 - 9'1" x 7 (2.77m x 7)

Bedroom 3 - 9'10" x 7'9" (3m x 2.36m)

Bedroom 4

Family Bathroom

LOCAL AUTHORITY

North Kesteven District Council

TENURE

Freehold

LOCATION

DESCRIPTION

ACCOMMODATION

Entrance Hall

Lounge - 18'8" x 12'8" (5.7m x 3.86m)

Kitchen/Diner - 10'2" x 20'6" (3.1m x 6.25m)

Conservatory - 12'2" x 10'4" (3.7m x 3.15m)

Utility Room

W/C

Bedroom 1 - 11'4" x 11'6" (3.45m x 3.5m)