



COMMERCIAL ROAD, LONDON, E1  
£1,850 PER MONTH UNFURNISHED

**THIS STUNNING, RECENTLY RENOVATED ONE-BEDROOM FLAT COMBINES MODERN ELEGANCE WITH A SOUGHT-AFTER LOCATION, OFFERING THE PERFECT HOME FOR CITY LIVING.**

Shoreditch | 020 7749 7650 | shoreditch@winkworth.co.uk

**Winkworth**

Tenant Fees Apply: Details of fees for tenant referencing, tenancy agreement admin fees and renewal fees are available on the Winkworth website and the link can be found with the displayed rent for the property. Tenants should ensure they are fully conversant with these upfront fees and other costs that are involved at the outset of the tenancy before making an offer to rent and your local Winkworth office will provide written details upon request.

[winkworth.co.uk](http://winkworth.co.uk)

See things differently



## DESCRIPTION:

This stunning, recently renovated one-bedroom flat combines modern elegance with a sought-after location, offering the perfect home for city living.

The property welcomes you with a long entrance hall, leading to a bright and contemporary open-plan living and kitchen area. The luxurious bathroom boasts elegant marble-effect tiling, adding a touch of sophistication. The generously sized bedroom is a serene retreat, complete with large sash windows that flood the room with natural light and provide ample storage solutions.

Ideally situated just 480 meters from Shadwell Station (Overground and DLR) and 950 meters from Whitechapel Station (Elizabeth Line), the flat offers exceptional connectivity to central London and beyond.

Early viewing is highly recommended!

Holding deposit: One week's rent.

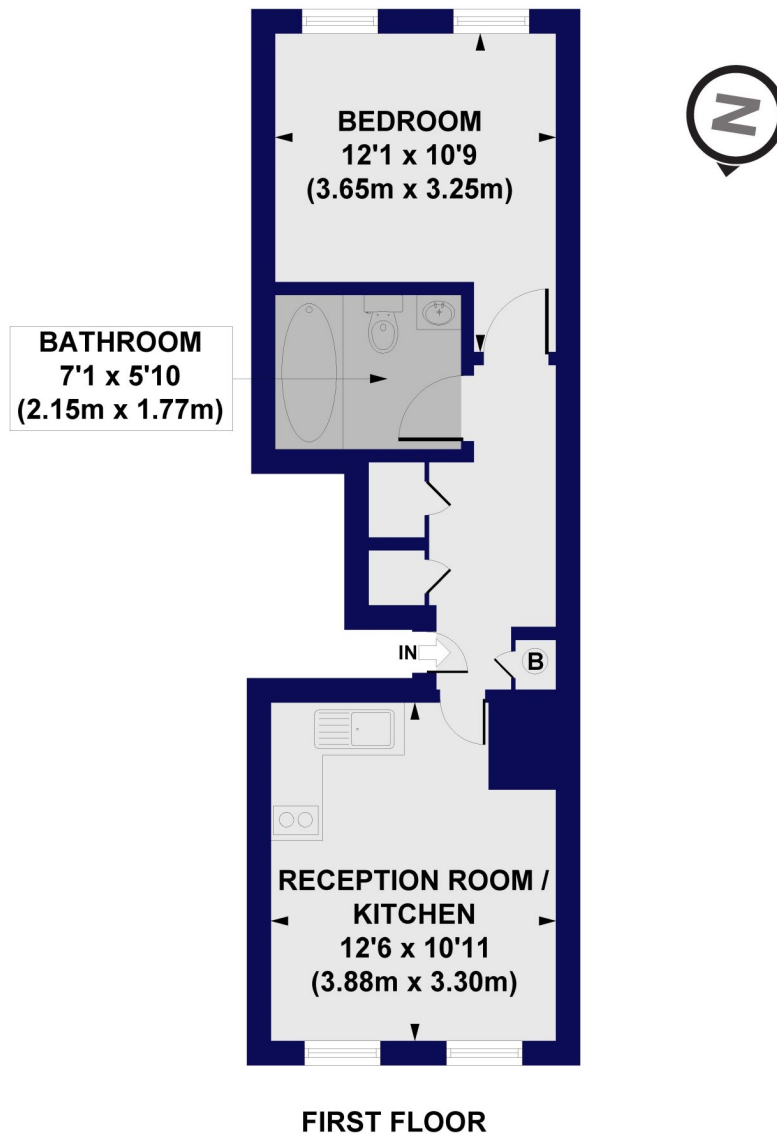
**Winkworth**





**Winkworth**

Commercial Road, E1  
Approx. Gross Internal Floor Area 363 sq. ft / 33.73 sq. m



All measurements of walls, doors, windows, fittings and appliances, including their size and location, are shown as standard sizes and do not constitute any warranty or representation by the seller, their agent or CP Creative. Any intending purchaser must satisfy himself by inspection or otherwise as to the correctness of the information contained in these plans. This plan is for illustrative purposes only and should be used as such by any prospective purchasers.

**Winkworth**

This floorplan is for illustration purposes only and is not to scale. The position and size of doors, windows, appliances and other features are approximate.

Shoreditch | 020 7749 7650 | shoreditch@winkworth.co.uk

**Winkworth**

*winkworth.co.uk*

See things differently

Winkworth wishes to inform prospective buyers and tenants that these particulars are a guide and act as information only. All our details are given in good faith and believed to be correct at the time of printing but they don't form part of an offer or contract. No Winkworth employee has authority to make or give any representation or warranty in relation to this property. All fixtures and fittings, whether fitted or not are deemed removable by the vendor unless stated otherwise and room sizes are measured between internal wall surfaces, including furnishings.