

## Montaigne Close, SW1P

£5,250 PER MONTH

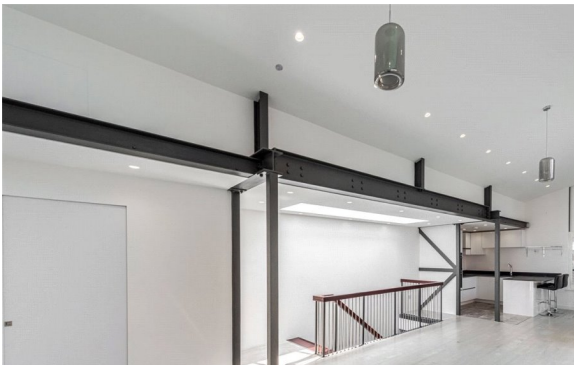
UNFURNISHED

### AT A GLANCE

- Three Bedroom House with Balcony
- 24 hour Porter & Leisure Complex
- Gated Development
- Two Bathrooms
- Underfloor heating

**Winkworth**

for every step...



Energy Efficiency Rating		
	Current	Potential
Very energy efficient - lower running costs		
(92+) <b>A</b>		
(81-91) <b>B</b>		
(69-80) <b>C</b>		
(55-68) <b>D</b>	61	71
(39-54) <b>E</b>		
(21-38) <b>F</b>		
(1-20) <b>G</b>		
Not energy efficient - higher running costs		
England, Scotland & Wales	EU Directive 2002/91/EC	

## MONTAIGNE CLOSE, SW1P

£5,250 PER MONTH  
UNFURNISHED

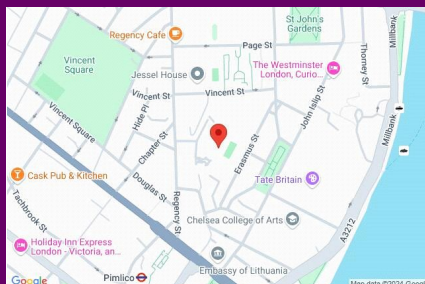
A detached house in central London which is part of a secure, gated development offering 24 hour porter and 3 secure, underground parking spaces.

The house is split over two levels with three bedrooms and two bathrooms on the ground floor and reception room, kitchen and balcony on the first floor.

In addition to a porter the development benefits from a private leisure complex which offers gym, sauna and jacuzzi.

Montaigne Close is located on Regency Street and is conveniently positioned for the shops, restaurants and local amenities of Marsham Street, Horseferry Road, Victoria Street and Westminster.

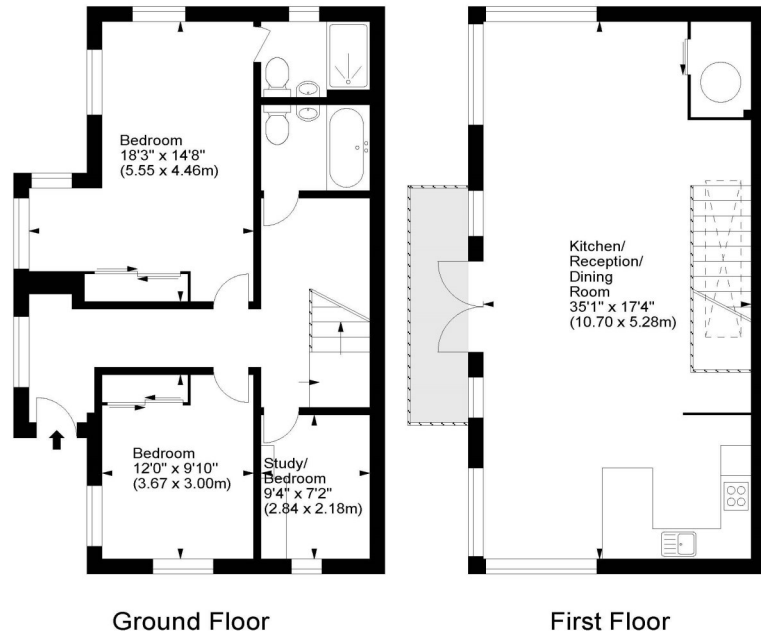
Nearest public transport can be found at Pimlico Underground Station whilst Victoria rail and Victoria Underground Station or Westminster Underground Station are all within reach of the property providing direct links within London.



winkworth wishes to inform prospective buyers and tenants that these particulars are a guide and act as information only. All our details are given in good faith and believed to be correct at the time of printing but they don't form part of an offer or contract. No Winkworth employee has authority to make or give any representation or warranty in relation to this property. All fixtures and fittings, whether fitted or not are deemed removable by the vendor unless stated otherwise and room sizes are measured between internal wall surfaces, including fireplaces.

## Montaigne Close, SW1

Approx. Gross Internal Area  
1310 Sq Ft - 121.70 Sq M



For illustration purposes only. Not to scale.  
All measurements are taken and shown at floor level.  
www.r3photography.co.uk © Photography / Floor Plans / Lease Plans / EPCs



Pimlico & Westminster | 020 7828 1786 |  
pimlico@winkworth.co.uk

winkworth.co.uk/pimlico

**Winkworth**

for every step...