



MERLIN COURT, WORTHING
£220,000 LEASEHOLD





MERLIN COURT, WORTHING

Winkworth Worthing offer to market this CHAIN FREE purpose built two bedroom apartment complete with its own balcony. Situated on the first floor, the property boasts a spacious lounge with plenty of room for seating as well as a dining table. This dual aspect lounge is light and bright and offers direct access to the West facing balcony. The kitchen offers a range of wall and base units with built in oven, hob and extractor fan as well as under counter space for appliances. Both bedrooms are well appointed doubles. The shower room is modern with a double walk-in shower, wash basin, and w.c. This property offers the additional benefit of a rather large cupboard which would be excellent for storage of any bulky items.

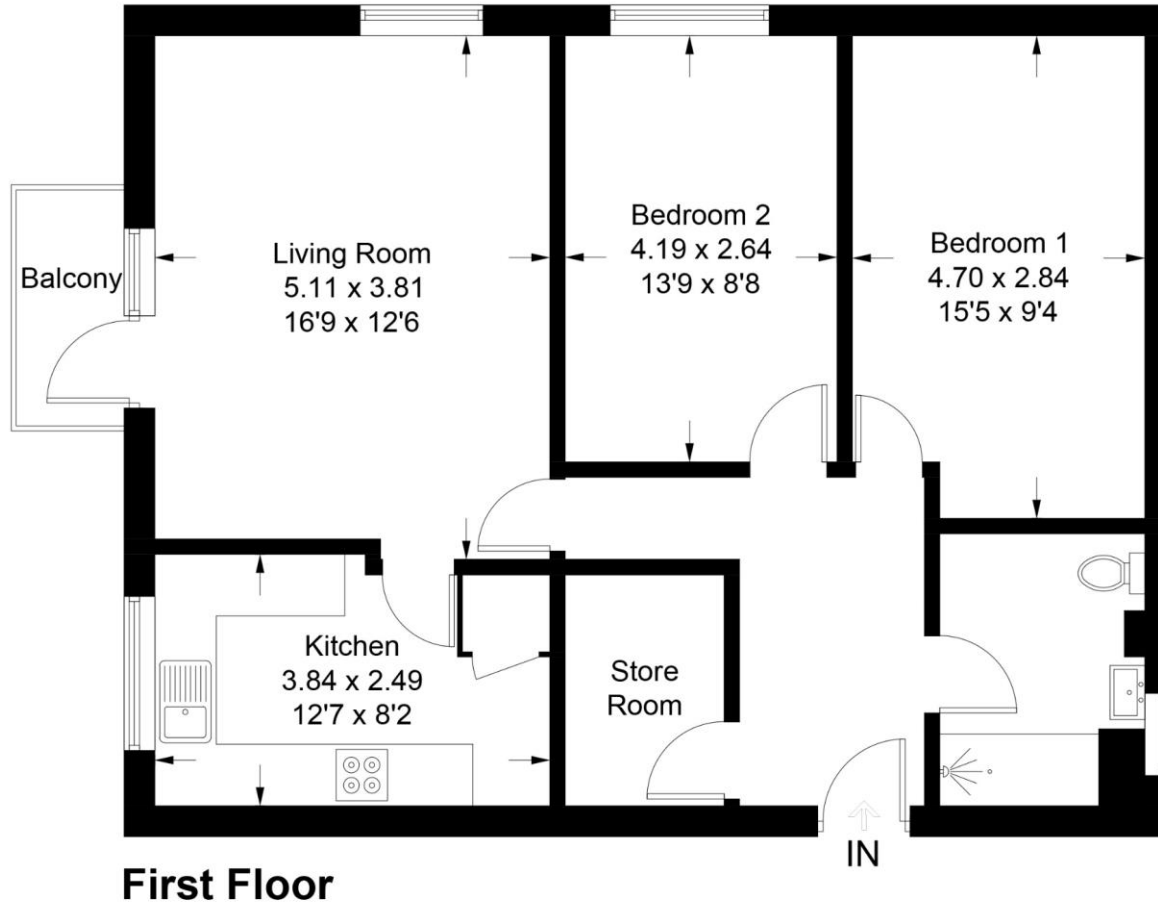
Additional features include an allocated off road parking space and low service charges.





19 Merlin Court, 106-116 Littlehampton Road, BN13 1RQ

Approximate Gross Internal Area = 72.6 sq m / 781 sq ft



Energy Efficiency Rating		Current	Potential
Very energy efficient - lower running costs			
(92-100)	A		
(81-91)	B		
(69-80)	C	79	79
(55-68)	D		
(39-54)	E		
(21-38)	F		
(1-10)	G		
Not energy efficient - higher running costs			
England, Scotland & Wales		EU Directive 2002/91/EC	

PRODUCED FOR WINKWORTH ESTATE AGENTS.

Whilst every attempt has been made to ensure the accuracy of the floorplan, measurements of doors, windows and rooms are approximate. These plans are for representation purposes only as defined by RICS Code of Measuring Practice and used as such by any prospective purchaser. Created by Emzco Marketing 2024.

Worthing | 01903 216219 | worthing@winkworth.co.uk



winkworth.co.uk

Winkworth wishes to inform prospective buyers and tenants that these particulars are a guide and act as information only. All our details are given in good faith and believed to be correct at the time of printing but they don't form part of an offer or contract. No Winkworth employee has authority to make or give any representation or warranty in relation to this property. All fixtures and fittings, whether fitted or not are deemed removable by the vendor unless stated otherwise and room sizes are measured between internal wall surfaces, including furnishings.