



BEVERLEY DRIVE, EDGWARE, MIDDLESEX, HA8
£795,000 FREEHOLD

THREE BEDROOM DETACHED HOUSE

Kingsbury | 020 8204 0000 | kingsbury@winkworth.co.uk

Winkworth

for every step...

winkworth.co.uk



Beautifully positioned within the sought-after Beverley Drive Estate, this detached corner plot house presents a unique opportunity to create your dream home. Currently a blank canvas, the property awaits its new family's personal touch to transform its layout into a tailored living space. The house features two versatile reception rooms, offering flexible options for family living and entertaining, a simplistic kitchen, three well-sized bedrooms, and a modern shower room. Externally, the property benefits from a garage for all your storage needs, off-street parking to the front, and a large rear garden. The generous plot size also provides fantastic scope for extension (STPP), allowing you to further enhance and expand the property. Conveniently located close to the transport links and amenities of Queensbury and Edgware, this property offers both potential and practicality. An internal viewing is highly recommended to appreciate the possibilities and envision your future in this desirable location.



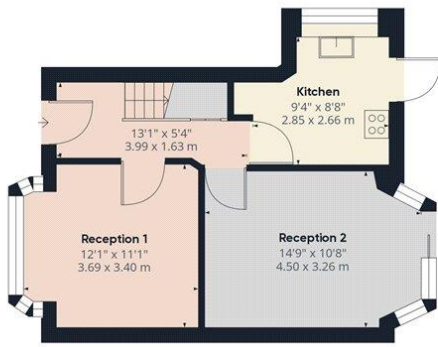
Winkworth

for every step...

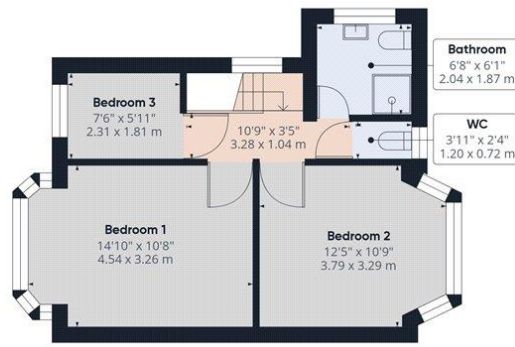


Winkworth

for every step...



Ground Floor Building 1



Floor 1 Building 1



Ground Floor Building 2

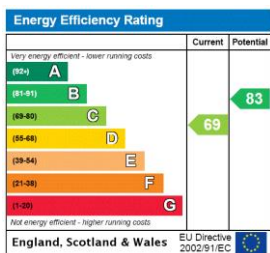
Approximate total area⁽¹⁾
1223.43 ft²
113.66 m²

(1) Excluding balconies and terraces

While every attempt has been made to ensure accuracy, all measurements are approximate, not to scale. This floor plan is for illustrative purposes only.
Calculations are based on RICS IPMS 3C standard.

GIRAFFE360

This floorplan is for illustration purposes only and is not to scale. The position and size of doors, windows, appliances and other features are approximate.



Tenure: Freehold

Council Tax Band: E

Where no figures are shown, we have been unable to ascertain the information. All figures that are shown were correct at the time of printing.

Kingsbury | 020 8204 0000 | kingsbury@winkworth.co.uk

Winkworth

for every step...

winkworth.co.uk

Winkworth wishes to inform prospective buyers and tenants that these particulars are a guide and act as information only. All our details are given in good faith and believed to be correct at the time of printing but they don't form part of an offer or contract. No Winkworth employee has authority to make or give any representation or warranty in relation to this property. All fixtures and fittings, whether fitted or not are deemed removable by the vendor unless stated otherwise and room sizes are measured between internal wall surfaces, including furnishings.