



UPPINGHAM AVENUE, STANMORE, MIDDLESEX, HA7
£630,000 FREEHOLD

BEAUTIFUL THREE BEDROOM SEMI DETACHED HOUSE IN STANMORE

Kingsbury | 020 8204 0000 | kingsbury@winkworth.co.uk

Winkworth

for every step...

winkworth.co.uk



Winkworth
for every step...

Located in a picturesque residential street, this exceptional home boasts an open-plan living concept that is to be appreciated by those who value quality and style. The ground floor hosts a bright and ample reception room, as well as a secondary open plan living/ dining space accompanied with a sleek kitchen flooded with natural light from scattered skylights and French doors leading to the garden, generating a breathtaking living area blending indoor and outdoor settings. Underfloor heating graces the kitchen and dining area, ensuring comfort and warmth, whilst a ground floor shower room adds to your convenience. Externally, you'll find a well sized rear garden, and off-street parking to the front. Moving to the first floor, you'll discover two bright double bedrooms with large windows and a neutral decor that exudes a sense of freshness. A dedicated study room, or third single bedroom provides a quiet space for work or leisure of different generations. A family shower room with separate W/C adds to the practicality of family living. A remarkable residence with scope to extend (STPP) for families seeking a well-designed residence conveniently located within easy reach of nearby tube stations, schools, and amenities. An internal viewing is advised.



Winkworth
for every step...



Winkworth
for every step...



for every step...



Winkworth
for every step...



Winkworth
for every step...



Winkworth
for every step...



Winkworth
for every step...



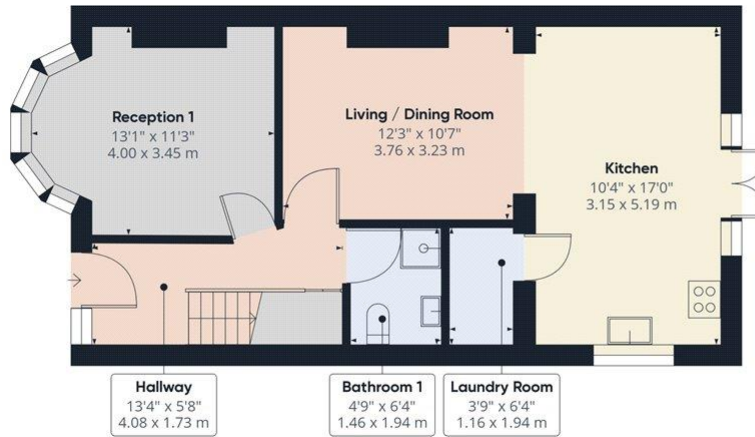
Winkworth
for every step...



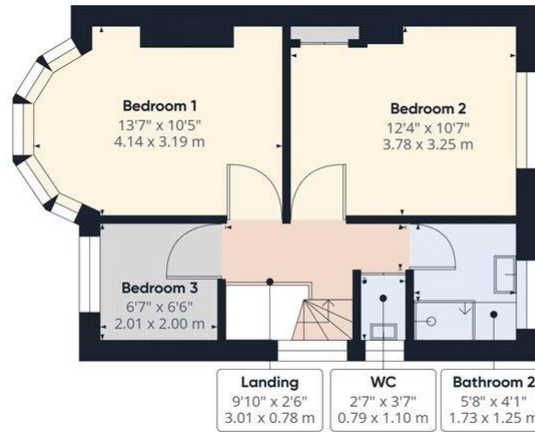
Winkworth
for every step...

Winkworth

for every step...



Ground Floor



Floor 1

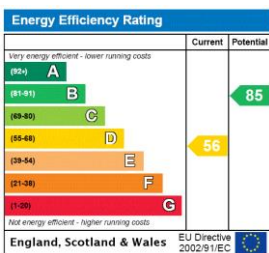
Approximate total area⁽¹⁾
972.26 ft²
90.33 m²

(1) Excluding balconies and terraces

While every attempt has been made to ensure accuracy, all measurements are approximate, not to scale. This floor plan is for illustrative purposes only.

GIRAFFE360

This floorplan is for illustration purposes only and is not to scale. The position and size of doors, windows, appliances and other features are approximate.



Tenure: Freehold

Council Tax Band: E

Where no figures are shown, we have been unable to ascertain the information. All figures that are shown were correct at the time of printing.

Kingsbury | 020 8204 0000 | kingsbury@winkworth.co.uk



for every step...

winkworth.co.uk

Winkworth wishes to inform prospective buyers and tenants that these particulars are a guide and act as information only. All our details are given in good faith and believed to be correct at the time of printing but they don't form part of an offer or contract. No Winkworth employee has authority to make or give any representation or warranty in relation to this property. All fixtures and fittings, whether fitted or not are deemed removable by the vendor unless stated otherwise and room sizes are measured between internal wall surfaces, including furnishings.