



LONDON ROAD, CHEAM, SUTTON, SM3
£350,000 LEASEHOLD

**AN EXTREMELY SPACIOUS CONTEMPORARY APARTMENT
FEATURING TWO DOUBLE BEDROOMS, AN OPEN-PLAN
KITCHEN/LIVING ROOM AND GATED RESIDENT'S PARKING**

Winkworth

Cheam Office | 020 8770 7766 | cheam@winkworth.co.uk

winkworth.co.uk

See things differently



AT A GLANCE

- Modern Apartment, Newly Created in 2017
- Large Second Floor Apartment
- 2 Double Bedrooms
- Generous Reception Hall
- Spacious Living/Dining Room
- Open Plan Modern Kitchen
- Luxury Bathroom
- Close to Shops and Restaurants
- Bus Routes to Several Transport Links
- Council Tax Band D
- EPC Rating B

DESCRIPTION

Situated within a purpose-built block of modern apartments, newly created in 2017, this extremely spacious two double bedroom apartment features approx. 775 sq. ft of accommodation, gated and allocated resident's parking and modern décor throughout.

The location is ultra convenient for families and commuters, set within easy reach of numerous well-regarded schools such as Cheam Park Farm Primary and Cheam High School, leisure centre and the picturesque Nonsuch Park. Cheam Village, North Cheam and Worcester Park high streets, are all close by and offer a range of amenities including shops, supermarkets, cafés and restaurants. Transport links include Cheam, Stoneleigh, West Sutton and Worcester Park train stations as well as a variety of bus routes towards Epsom, Kingston and Morden, with the latter having an Underground station.

The accommodation comprises an extremely spacious entrance hall with storage cupboards, a beautifully designed kitchen with breakfast bar and high spec appliances, a large living room with space for a dining table and chairs, two well-proportioned double bedrooms and the luxury family bathroom.

Other benefits include gated, allocated resident's parking and a secure entry phone system.

The current owner has advised there is no set service charge, the buildings insurance is £472.72 approx. per annum and the ground rent is £350 per annum. Please verify/check with your conveyancer.



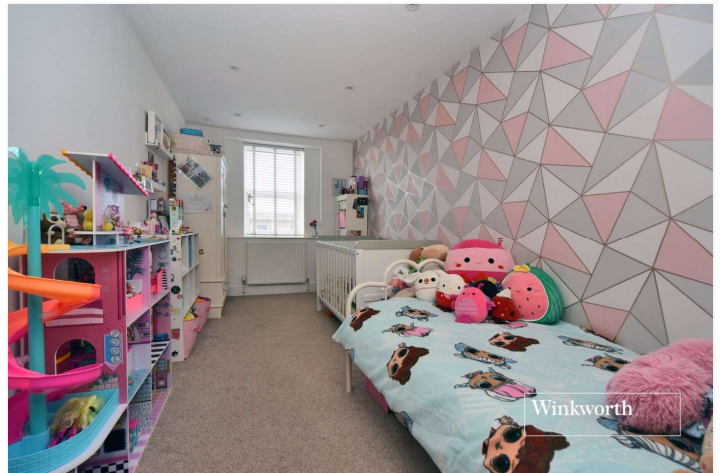
Winkworth



Winkworth



Winkworth



Winkworth



Winkworth

ACCOMMODATION

Entrance Hall - 13' x 8'2" max (3.96m x 2.5m max)

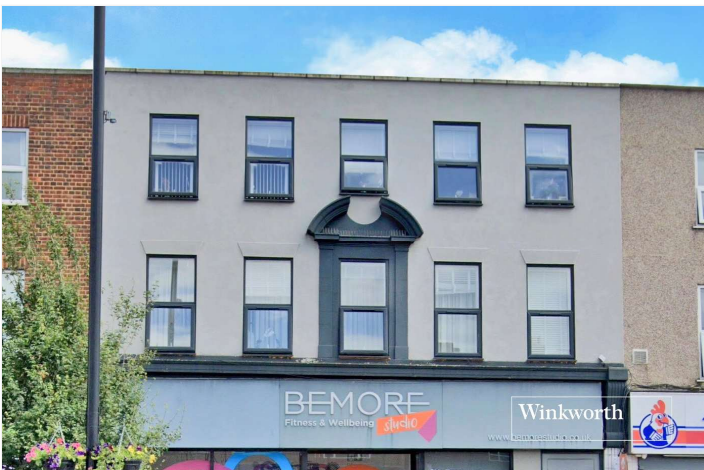
Living/Dining Room - 20'5" x 10'10" max (6.22m x 3.3m max)

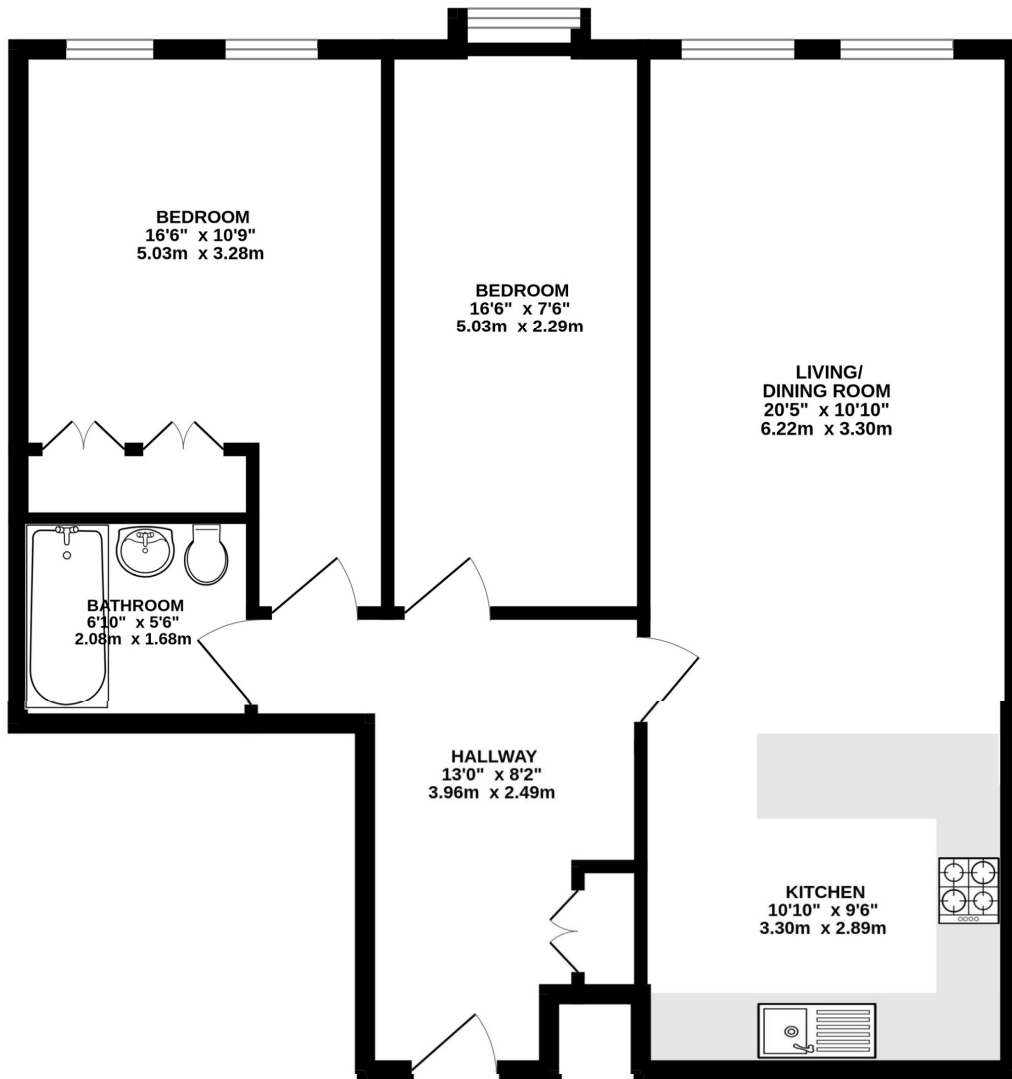
Open Plan Kitchen - 10'10" x 9'6" max (3.3m x 2.9m max)

Bedroom - 16'6" x 10'9" max (5.03m x 3.28m max)

Bedroom - 16'6" x 7'6" max (5.03m x 2.29m max)

Bathroom - 6'10" x 5'6" max (2.08m x 1.68m max)





SECOND FLOOR FLAT

London Road, Cheam SM3 8HW

INTERNAL FLOOR AREA (APPROX.) 775 sq ft/ 72.0 sq m

Whilst every attempt has been made to ensure the accuracy of this floor plan, measurement of doors, windows, rooms and any other items are approximate and no responsibility is taken for any error, omission or mis-statement. Made with Metropix © 2025.

Winkworth

This floorplan is for illustration purposes only and is not to scale. The position and size of doors, windows, appliances and other features are approximate.

Energy Efficiency Rating		Current	Potential
Very energy efficient - lower running costs			
(92+)	A	82	82
(81-91)	B		
(69-80)	C		
(55-68)	D		
(39-54)	E		
(21-38)	F		
(1-20)	G		
Not energy efficient - higher running costs			
England, Scotland & Wales		EU Directive 2002/91/EC	

Winkworth

winkworth.co.uk

See things differently

Winkworth wishes to inform prospective buyers and tenants that these particulars are a guide and act as information only. All our details are given in good faith and believed to be correct at the time of printing but they don't form part of an offer or contract. No Winkworth employee has authority to make or give any representation or warranty in relation to this property. All fixtures and fittings, whether fitted or not are deemed removable by the vendor unless stated otherwise and room sizes are measured between internal wall surfaces, including furnishings.