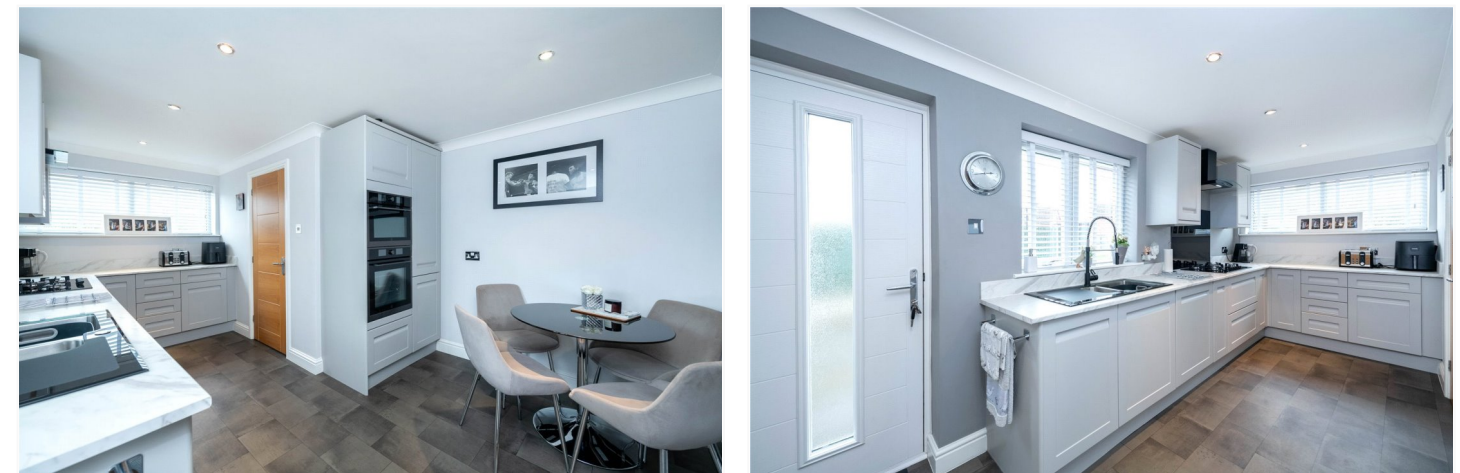
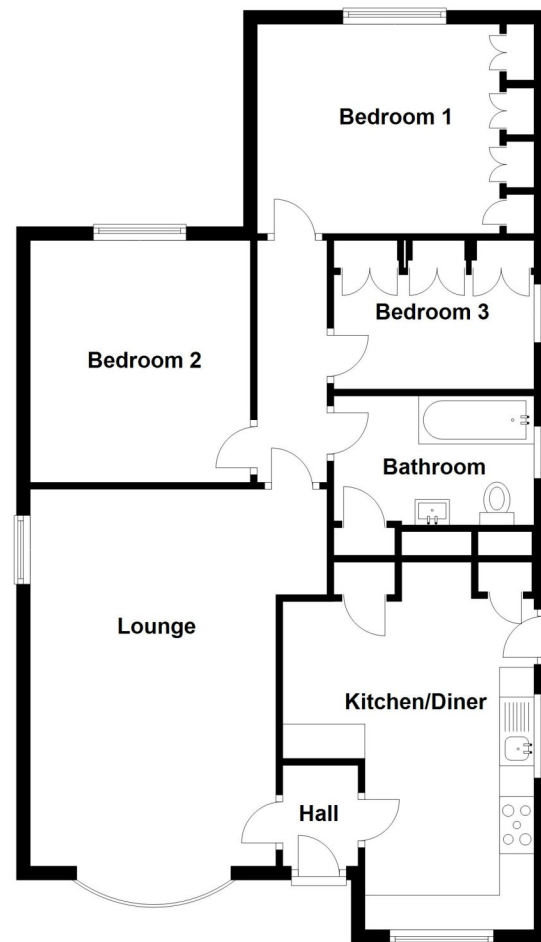


EPC TO FOLLOW

Ground Floor



2 York Road, Sleaford, Lincolnshire, NG34 8UA

£299,950 Freehold

We are delighted to offer for sale this immaculately presented Three Bedroom Detached Bungalow which has been completely modernised throughout by the current vendors.

The property has been vastly modernised to a high specification throughout with the benefit of a newly fitted Kitchen, fully tiled Shower Room, solid oak veneer internal doors, a new composite front and side door and a range of built in wardrobes and storage in the Master Bedroom.

STUNNING BUNGALOW | IMMACULATLY PRESENTED | NEWLY FITTED KITCHEN | FULLY TILED BATHROOM | OAK VENEER INTERNAL DOORS | WELL PROPORTIONED ACCOMMODATION | AMPLE PARKING | DETACHED GARAGE | NON-OVERLOOKED REAR GARDEN



To the front of the property is a tarmac driveway offering ample off street parking leading up to the detached garage. There is also hedging and mature bushes to the front offering privacy. The rear garden is principally laid to lawn, enclosed by fencing to all aspects and is non overlooked.

The accommodation comprises of Entrance Hall, Lounge, Kitchen/Diner, Three Bedrooms, Family Bathroom & a detached Garage.

A viewing of this property is highly recommended to appreciate the size and quality it has to offer.



ACCOMMODATION

Entrance Hall

Kitchen/Diner - 18' x 10' (5.49m x 3.05m)

Lounge - 18' x 11'9" (5.49m x 3.58m)

Bedroom One - 13'3" x 10' (4.04m x 3.05m)

Bedroom Two - 12'2" x 8'9" (3.7m x 2.67m)

Bedroom Three - 8'9" x 8'9" (2.67m x 2.67m)

Family Bathroom

Garage

LOCAL AUTHORITY

North Kesteven District Council

TENURE

Freehold

COUNCIL TAX BAND

C

