



**THE LODGE, CORRINGHAM COURT, LONDON, NW11
£395,000 LEASEHOLD (SHARE OF FREEHOLD)**

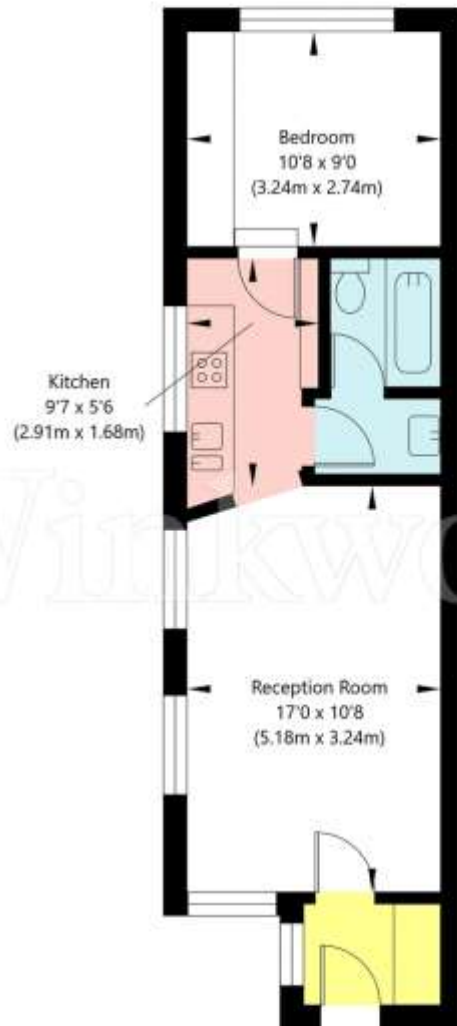
Originally designated as the Porters Lodge, we are delighted to offer this 1 bedroom ground floor detached property located within the grounds of Corringham Court, Corringham Road. Sitting adjacent to the Heath Extension, this is a wonderful opportunity to purchase either a starter home, a rental investment or even a bijou pied & terre.

1 BEDROOM/ DETACHED BUILDING/ COMMUNAL GARDENS/ LONG LEASE/
PARKING AVAILABILITY/ CHAIN FREE/ EPC RATING: E/ COUNCIL TAX BAND:
BARNET - G

DESCRIPTION:

Corringham Court, Corringham Road, London, NW11 7BY

Ground Floor
GROSS INTERNAL FLOOR AREA
APPROX. 38.06 SQ M / 410 SQ FT



APPROXIMATE GROSS INTERNAL FLOOR AREA 38.06 SQ M / 410 SQ FT

THIS FLOOR PLAN IS FOR ILLUSTRATIVE PURPOSES ONLY AND
SHOULD BE USED FOR THIS PURPOSE BY PROSPECTIVE APPLICANTS AS ITS NOT TO SCALE.

(c) AMBERSHORE PIX LIMITED / PHOTO - VIDEO - FLOOR PLANS / 0800 999 1577 / WWW.AMBERSHOREPIX.CO.UK

Energy Efficiency Rating	
Current	Potential
A	A
B	B
C	C
D	D
E	E
F	F
G	G

Energy Efficiency Rating: 77 (Potential), 50 (Current)

England, Scotland & Wales

Leasehold 999 years from 29th September 1975

Service Charge & Reserve Fund - £5,226.8 p/a